

**True Vertical Depth  
AIT - BHC**

2 inch Display

A Member of Schlumberger

Using the following logs:  
PEX  
BHC

COMPANY: NORTHWEST NATURAL GAS  
WELL: OM 22-26-65 RD  
FIELD: MIST  
COUNTY: COLUMBIA  
STATE: OREGON  
COUNTRY: OREGON  
Date Logged: 2000/05/21  
Date Processed: 17-JUN-2000  
Well Location: 1744 22' SOUTH, 2512.13' EAST FROM THE NW CORNER OF 26  
Elevations: KB: 631ft DF: 629ft GL: 621ft  
API Number: 36-009-00330 Job Number:

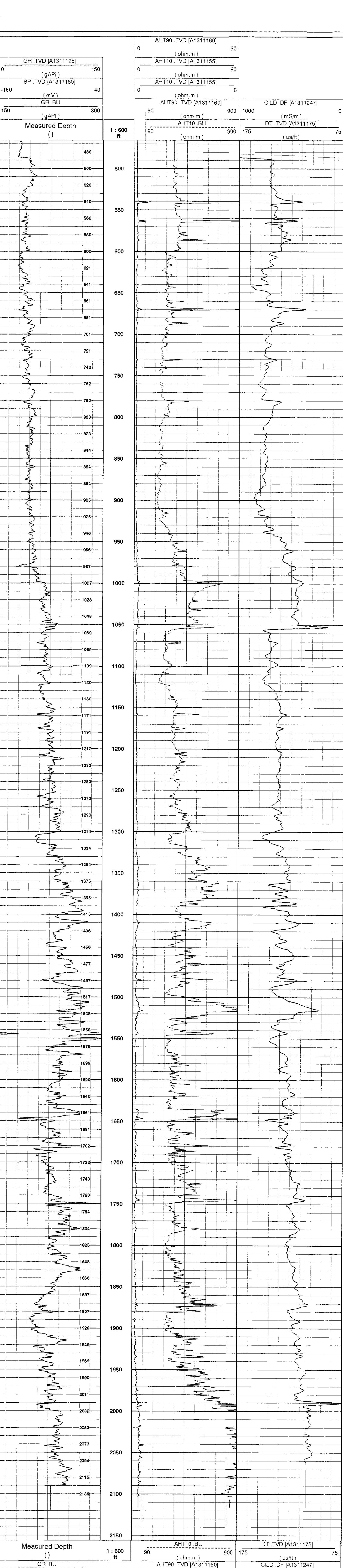
FIELD HERE The well name, location and borehole reference data were furnished by the customer.

All interpretations are opinions based on inferences from electrical or other measurements and we cannot and do not guarantee the accuracy or correctness of any interpretation and we shall not be expected in the case of gross or willful negligence or our part be held responsible for any loss, costs, damages or expenses incurred or sustained by anyone resulting from any interpretations made by any of our officers, agents or employees. These interpretations are also subject to Cause 4 of our General Terms and Conditions as set out in our current Price Schedule.

Field Recording: Location: SACRAMENTO Software Version: 9C1-303 Engineer: M.KHAN  
Office Recording: ICS Center: Bakersfield, ICS Baseline: Log Analyst: T.Quinlan

Mud and Borehole Measurements:  
Rmf @ Measured Temperature: 1.185ohm.m @ 76degF BHT: 86degF Bitsize: 6.25in  
Rmf @ Measured Temperature: 1.05ohm.m @ 72degF Type Fluid in Hole: DMA  
Rmc @ Measured Temperature: 0.93ohm.m @ 76degF Mud Density: 8.9lbm/gal

Remarks:



GR.TVD [A1311195]	0	150	(gAPI)
SP.TVD [A1311180]	-160	40	(mV)
GR.BU	150	300	(gAPI)
Measured Depth (ft)	0	150	
GR.BU	150	300	(gAPI)
SP.TVD [A1311180]	-160	40	(mV)
GR.TVD [A1311195]	0	150	(gAPI)
AHT90.TVD [A1311160]	0	90	(ohm.m)
AHT10.TVD [A1311155]	0	90	(ohm.m)
AHT10.TVD [A1311155]	0	6	(ohm.m)
AHT10.BU	90	90	(ohm.m)
AHT90.TVD [A1311160]	90	90	(ohm.m)
CILD.DF [A1311247]	1000	0	(mS/m)
DT.TVD [A1311175]	175	75	(us/ft)

Company: NORTHWEST NATURAL GAS  
Well: OM 22-26-65 RD  
FIELD: MIST  
COUNTY: COLUMBIA  
STATE: OREGON  
Date Logged: 2000/05/21  
Date Processed: 17-JUN-2000  
Well Location: 1744 22' SOUTH, 2512.13' EAST FROM THE NW CORNER OF 26  
Elevations: KB: 631ft DF: 629ft GL: 621ft  
API Number: 36-009-00330 Job Number:

