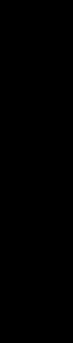


12-13-05-165

BOREHOLE COMPENSATED SONIC - 2



COMPANY: REICHHOLD ENERGY
 WELL: COLUMBIA COUNTY 45-3
 FIELD: MIST
 COUNTY: OREGON
 STATE: OREGON
 LOCATION: USGS N 303'E DF
 SECT: S CORNER TWP: 6N
 REEL: S14

PERMANENT DATUM: GL 626.8'
 ELEVATION: KPI 626.8'
 LOG MEASURED FROM: PERM. DATUM
 DRILL. MEASURED FROM: KB
 DATE: 15 JUN 1982

DEPTH-DRILLER: 3099.0'
 DEPTH-LOGGER: 3100.0'
 BTM LOG INTERVAL: 3098.0'
 TOP LOG INTERVAL: 594.0'
 CASING-DRILLER: 620'
 CASING-LOGGER: 594'
 HEIGHT: 20.00 LB/F
 BIT SIZE: 6.25
 BIT DEPTH: 3099'

OTHER SERVICES-
 HDT
 CIS

PROGRAM
 TRAP NDI
 20.2
 SERVICE
 ORDER NDI
 205815

TYPE FLUID IN HOLE: LIGNO
 DENSITY: 10.3 LB/G
 VISCOSITY: 42.0 S
 PH: 8.5
 FLUID LOSS: 4.7 C3
 SOURCE OF SAMPLE: CIRC
 RH: 1.190 DHMM AT 82.0 DF
 RHF: 1.210 DHMM AT 59.0 DF
 RHC: 2.000 DHMM AT 62.0 DF
 SOURCE RNF/RHC: MEAS. MEAS
 RM AT BHT: 0.937 DHM AT 106. DF
 RMF AT BHT: 0.706 DHM AT 106. DF
 RMC AT BHT: 1.221 DHM AT 106. DF
 TIME CIRC. STOPPED: 0800
 TIME LOGGER ON BTM: 1030
 MAX. REC. TEMP: 106.0 DF
 LOGGING UNIT NO: 8128
 LOGGING UNIT LOC: SACRAMENTO
 RECORDED BY: ANDERSEN
 WITNESSED BY: ALGER

REMARKS:
 TOOL STICKING 2980 TO 3040

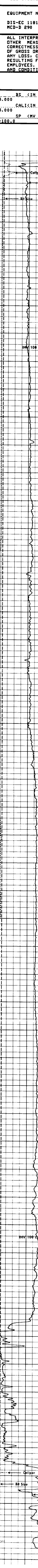
EQUIPMENT NUMBERS-
 DIS-EC 1181 DIC-DA 1149 SLS WA 1082 SLC-FA 1589
 MCD-D 290

ALL INTERPRETATIONS ARE OPINIONS BASED ON INFERENCES FROM ELECTRICAL OR OTHER MEASUREMENTS AND WE CANNOT, AND DO NOT GUARANTEE THE ACCURACY OR CORRECTNESS OF ANY INTERPRETATIONS, AND WE SHALL NOT, EXCEPT IN THE CASE OF GROSS OR WILLFUL NEGLIGENCE ON OUR PART, BE LIABLE OR RESPONSIBLE FOR ANY LOSS, COSTS, DAMAGES OR EXPENSES INCURRED OR SUSTAINED BY ANYONE RESULTING FROM ANY INTERPRETATION MADE BY ANY OF OUR OFFICERS, AGENTS OR EMPLOYEES. THESE INTERPRETATIONS ARE ALSO SUBJECT TO OUR GENERAL TERMS AND CONDITIONS AS SET OUT IN OUR CURRENT PRICE SCHEDULE.

FILE
 12

BS (IN) 5.000 15.00
 CALI (IN) 5.000 15.00
 SP (MV) -100.0 0.0
 DT (US/F) 150.0 50.00

FILE
 8



FILE
 8

BS (IN) 5.000 15.00
 CALI (IN) 5.000 15.00
 SP (MV) -100.0 0.0
 DT (US/F) 150.0 50.00

SENSOR MEASURE POINT TO TENSION REFERENCE POINT

| | | | | | |
|------|------|------|------|------|------|
| AMPL | 43.9 | FEET | DT | 41.4 | FEET |
| SRAT | 41.4 | FEET | CBL | 43.9 | FEET |
| CALI | 31.8 | FEET | TT | 43.9 | FEET |
| SFL | 6.4 | FEET | ILD | 9.4 | FEET |
| SP | 2.5 | FEET | ILM | 5.8 | FEET |
| TENS | .0 | FEET | SPAR | 2.5 | FEET |
| NDIS | 35.7 | FEET | | | |

PARAMETERS

| NAME | VALUE | UNIT | NAME | VALUE | UNIT |
|------|-------|------|------|--------|------|
| CDTS | 100.0 | | BS | 6.250 | IN |
| DTF | 189.0 | US/F | DTM | 56.000 | US/F |
| SBR | 1.000 | DHMM | DSEC | 6.600 | MHMD |
| FPHI | SPHI | | BSEC | 0.3000 | MHMD |
| DO | 0.0 | | BHS | OPEN | |

COMPANY: REICHHOLD ENERGY
 WELL: COLUMBIA COUNTY 45-3
 FIELD: MIST
 COUNTY: COLUMBIA STATE: OREGON

SCHL. FR: 3059
 SCHL. TD: 3100
 DRLL. TD: 3099
 Elev: KB 626.8
 DF 626.8
 GL 626.8

-End-