

WELL NO. 43-11

COMPANY REICHOLD ENERGY CORPORATION  
 WELL COLUMBIA COUNTY NO. 43-11  
 FIELD MIST NEHALEM BASIN  
 COUNTY COLUMBIA STATE OREGON

LOCATION 11-6N-5W  
 COUNTY COLUMBIA COUNTY  
 WELL NO. 43-11  
 COMPANY REICHOLD ENERGY

Remainder Datum: GL Elev: 787.34  
 Log Measured From: K8 70.55 ft. Above Perm. Datum Elev: K8 797.89  
 Logging Measured From: KB Elev: 787.32  
 Date: 6-13-80  
 Run No. ONE  
 Depth-Logger: 3314  
 Btm. Log Interval: 3308  
 Top Log Interval: 7.405 @ 405  
 Casing: 6" 10.5  
 Casing Log: 6" 10.5

TYPE Fluid in Hole: LITNOSULFONATE  
 Dam: 7.5 Vic: 4.4  
 pH: 9.8 @ 2.0 ml  
 Source of Sample: CIRCULATION  
 Km @ Meas. Temp: 2.79 @ 74 F  
 Km @ Meas. Temp: 2.98 @ 58 F  
 Km @ Meas. Temp: 1.19 @ 58 F  
 Source Btm. Core: N 1.18 @ 96 F  
 Casing on Bottom: 2.18 @ 96 F  
 Log on Bottom: 0.525  
 Max. Rec. Temp: 96 F  
 Equip. Location: B128 S/C  
 Recorded By: LANGRORD  
 Witnessed By: BRUER

Run No. 123895  
 Service Order No. FULL  
 Fluid Level: -  
 Salinity ppm. cl: -  
 Speed F.P.M.: 100

EQUIPMENT DATA  
 Panel No. 304  
 Cartridge No. 217  
 Sonde No. 35  
 Mem. Panel No. CSU  
 G.R. Panel No. 11111111  
 G.R. Cart No. 11111111  
 Tape Recorder - (TR): -  
 Depth Encoder - (DRE): -  
 Pressure Wheel - (CPM): -  
 Type Centralizers: NONE  
 Stand Off - Inches: -

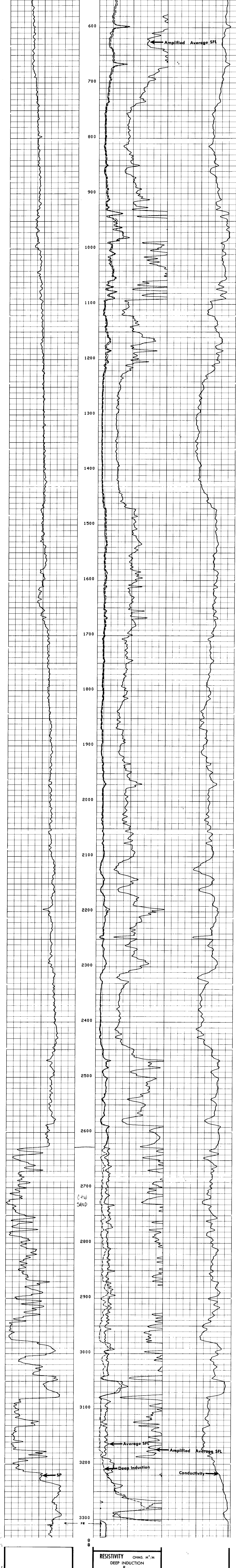
CALIBRATION DATA  
 SBR: 1.0  
 Sonde Error - ILM: 4.7  
 Sonde Error - ILD: 3.7  
 G.R. BKG. - CPS: -  
 G.R. Source - CPS: -  
 S.E. Set In Hole - Depth: -  
 S.E. Corr. - Hole Size: -

LOGGING DATA  
 SBR: 1.0  
 Sonde Error Log - ILM: 4.7  
 Sonde Error Log - ILD: 3.7  
 G.R. Scale per 100 Div: -  
 G.R. - T.C. Log: -

SPONTANEOUS POTENTIAL  
 10 MILLIVOLTS  
 - +

RESISTIVITY OHMS. M<sup>2</sup>/M  
 DEEP INDUCTION  
 R<sub>ILD</sub>  
 0 30  
 0 300  
 SPHERICALLY FOCUSED LOG  
 R<sub>SFL</sub>  
 0 30  
 0 300  
 AMP. SPHERICALLY FOCUSED LOG  
 0 6

CONDUCTIVITY MILLIMHOS/M  
 DEEP INDUCTION  
 1000 0



SPONTANEOUS-POTENTIAL  
 10 MILLIVOLTS  
 - +

RESISTIVITY OHMS. M<sup>2</sup>/M  
 DEEP INDUCTION  
 R<sub>ILD</sub>  
 0 30  
 0 300  
 SPHERICALLY FOCUSED LOG  
 R<sub>SFL</sub>  
 0 30  
 0 300  
 AMP. SPHERICALLY FOCUSED LOG  
 0 6

CONDUCTIVITY MILLIMHOS/M  
 DEEP INDUCTION  
 1000 0

COMPANY REICHOLD ENERGY CORPORATION  
 WELL COLUMBIA COUNTY NO. 43-11  
 FIELD MIST NEHALEM BASIN  
 COUNTY COLUMBIA STATE OREGON

SCHL. FR. 3308  
 SCHL. TD. 3314  
 DRLR. TD. 3326  
 Elev: KB 797.89  
 DF -  
 GL 787.34