

CSU

CVERSEBIP ST

COMPANY: REICHOLD ENERGY CORPORATION
 WELL: COLUMBIA COUNTY 43-34
 FIELD: MIST
 COUNTY: COLUMBIA
 STATE: OREGON
 LOCATION: 215° N & 1079' W. P. SE COR
 SEC: 34 TWP: 6N RGE: 3E
 PERMIT NO: 8139-1-1
 LOG MESSNGR FROM: PEK DATUM
 LOG MESSNGR FROM: K81 8139-1-1
 B.M.G. MEASURED FROM: DATUM
 OTHER SERVICES-
 BIL
 LTR/CM/CR

DEPTH-METERS: 2100.0 F
 B.T.M. LOG INTERVAL: 50.0 F
 T.M. LOG INTERVAL: 431.0 F
 CASING-BELLER: 431 F
 CASING-LOGGER: 8 5/8" 2100 F
 B1 SIZE: 7 7/8"
 DEPTH: 2100 F

DATE: 18 MAR 85
 RUN IN: 18 MAR 85

PROGRAM:
 SACRAMENTO
 SERVICED
 065, 8
 068, 410
 068, 410

TYPE FLUID IN HOLE: LIGHTSULFONATE
 DENSITY: 10.4 LB/G
 VISCOSITY: 50.0 S
 PH: 9.5
 FLUID LOSS: 5.4 CC
 SOURCE OF SAMPLE: FLOWLINE
 RFI: 2.090 DHMM AT 57.0 DEGF
 RMF: 1.680 DHMM AT 45.0 DEGF
 RMC: 5.760 DHMM AT 50.0 DEGF
 SOURCE RMF/RMC: MEASURED/MEASURED
 RM AT BHT: 1.264 DHMM AT 91.0 DEGF
 RMC AT BHT: 9.960 DHMM AT 91.0 DEGF
 TIME CIRC STOPPED: 13100 3/18
 TIME LOGGER ON BTH: 18100 3/18
 MAX. REC. TEMP: 91.0 DEGF
 LOGGING UNIT NO: 8128
 LOGGING UNIT LOG: SACRAMENTO
 RECORDED BY: MAYER
 WITNESSED BY: ALGER/THOMAS

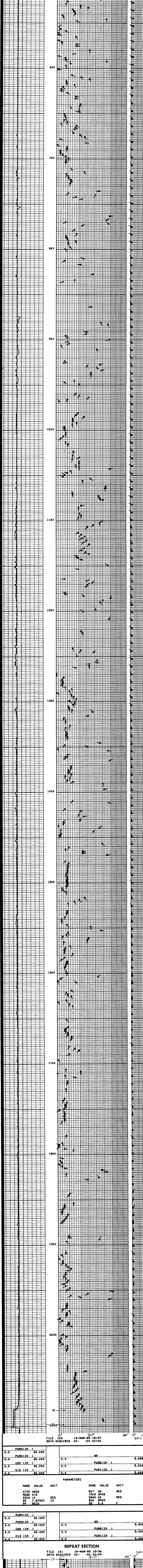
REMARKS:
 CHLDRIDES: 700PPM

EQUIPMENT NUMBERS-
 HDS 1906 HDE 2996 DAN 1891

ALL INTERPRETATIONS ARE OPINIONS BASED ON INFERENCE FROM ELECTRICAL OR OTHER MEASUREMENTS AND WE CANNOT AND DO NOT GUARANTEE THE ACCURACY OR CORRECTNESS OF ANY INTERPRETATIONS, AND WE SHALL NOT, EXCEPT IN THE CASE OF GROSS OR WILLFUL NEGLIGENCE ON OUR PART, BE LIABLE OR RESPONSIBLE FOR ANY LOSS, COSTS, DAMAGES OR EXPENSES INCURRED OR SUSTAINED BY ANYONE RESULTING FROM ANY INTERPRETATION MADE BY ANY OF OUR OFFICERS, AGENTS OR EMPLOYEES. THESE INTERPRETATIONS ARE ALSO SUBJECT TO OUR GENERAL TERMS AND CONDITIONS AS SET OUT IN OUR CURRENT PRICE SCHEDULE.

FILE 103 18-MAR-85 19:59
 DATA ACQUIRED 00--00 00:00

0.0 PUM<IN >	20.000	0.0 AH	5.0000
0.0 PUM<IN >	20.000	0.0 PUM<IN >	5.0000
0.0 CES<IN >	20.000	0.0 PUM<IN >	5.0000
0.0 CIS<IN >	20.000	0.0 PUM<IN >	5.0000



0.0 PUM<IN >	20.000	0.0 AH	5.0000
0.0 PUM<IN >	20.000	0.0 PUM<IN >	5.0000
0.0 CES<IN >	20.000	0.0 PUM<IN >	5.0000
0.0 CIS<IN >	20.000	0.0 PUM<IN >	5.0000

PARAMETERS

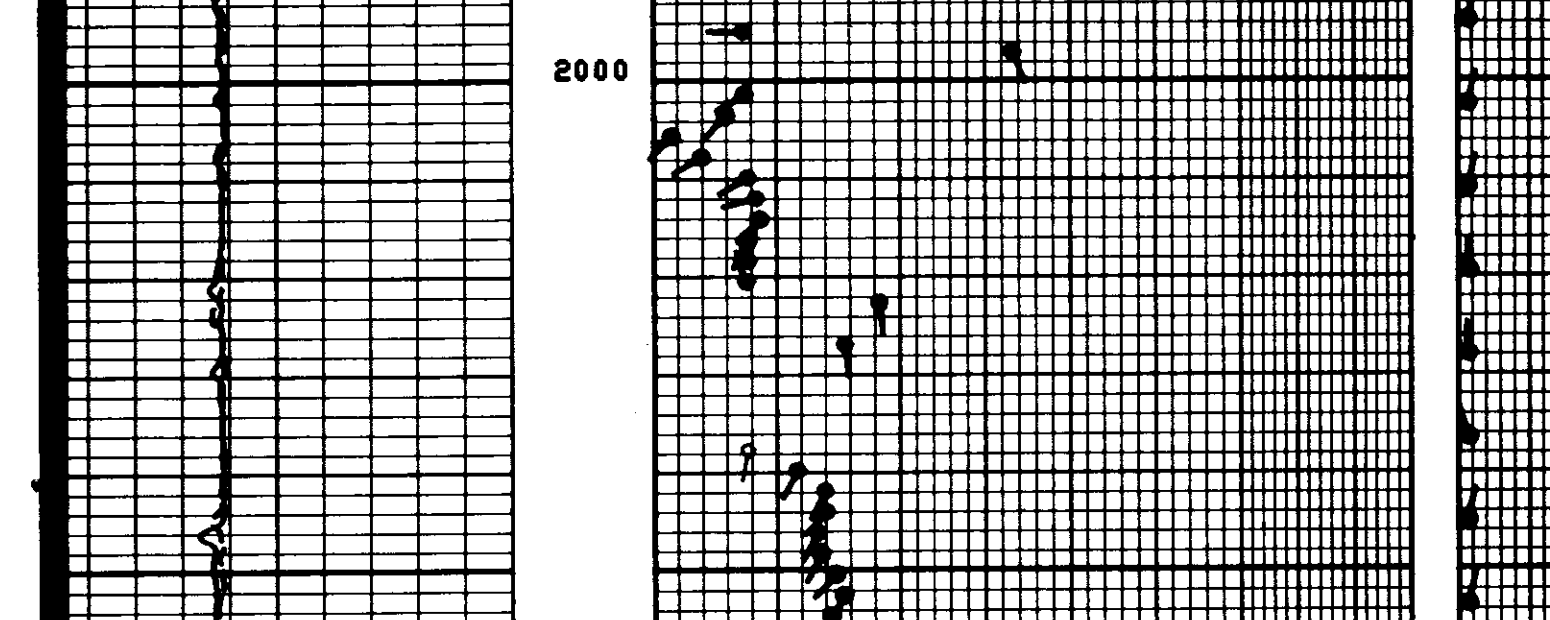
NAME	VALUE	UNIT	NAME	VALUE	UNIT
STYP	HDS		MCT	36	
MDE	4/2		TCCA	3PAD	
DSCR	10	DEG	DMA	60	DEG
BS	7.87500	IN	BNS	OPEN	
PP	RECC		DD	0.0	F

REPEAT SECTION

FILE 101 18-MAR-85 19:56
 DATA ACQUIRED 00--00 00:00

90° DEVI

0° DEVI



0.0 PUM<IN >	20.000	0.0 AH	5.0000
0.0 PUM<IN >	20.000	0.0 PUM<IN >	5.0000
0.0 CES<IN >	20.000	0.0 PUM<IN >	5.0000
0.0 CIS<IN >	20.000	0.0 PUM<IN >	5.0000

PARAMETERS

NAME	VALUE	UNIT	NAME	VALUE	UNIT
STYP	HDS		MCT	36	
MDE	4/2		TCCA	3PAD	
DSCR	10	DEG	DMA	60	DEG
BS	7.87500	IN	BNS	OPEN	
PP	RECC		DD	0.0	F