

**DUAL INDUCTION LATERLOG COMPENSATED SONIC LOG**

LOGGING SERVICE: HALLIBURTON LOGGING SERVICES, INC. (Logo)

5" - 11" (Wellbore Diameter)

COMPANY: \_\_\_\_\_ STATE: \_\_\_\_\_  
WELL: \_\_\_\_\_ COUNTY: \_\_\_\_\_  
FIELD: \_\_\_\_\_  
LOCATION: \_\_\_\_\_ STATE: \_\_\_\_\_  
API No.: \_\_\_\_\_  
Log No.: \_\_\_\_\_  
Date: \_\_\_\_\_

LOGGING DATE: \_\_\_\_\_  
LOGGING TIME: \_\_\_\_\_

RESISTIVITY/EQUIPMENT DATA  
RESISTIVITY: \_\_\_\_\_  
EQUIPMENT: \_\_\_\_\_

LOGGING DATA  
LOGGING TIME: \_\_\_\_\_

RESISTIVITY/EQUIPMENT DATA  
RESISTIVITY: \_\_\_\_\_

LOGGING DATA  
LOGGING TIME: \_\_\_\_\_

Service Ticket No. 68242 API Serial No. 489.5 PGM Version: 0326-01 Part Number 26000

DATE	SAMPLE NO.	DEPTH	FLUID LOSS	TYPE FLUID	LOG	DEPTH	SCALE UP	SCALE DOWN	COMPUTED FROM

Dens. @ 1000	Visc.	Fluid Loss

RESISTIVITY/EQUIPMENT DATA

Run No.	Serial No.	Tool Type	Tool Position	Other

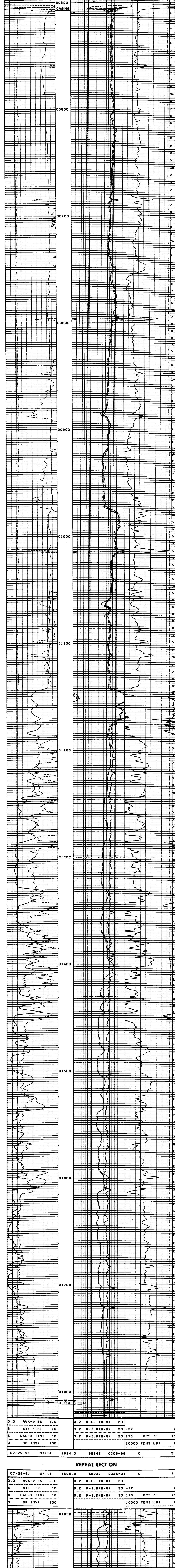
Run No.	Serial No.	Log Type	Source Type	Serial No.	Strength

EQUIPMENT DATA

Run No.	Serial No.	Model No.	Diameter	Log Type	Source Type	Serial No.	Strength

LOGGING DATA

Run No.	Serial No.	Model No.	Diameter	Log Type	Source Type	Serial No.	Strength



REPEAT SECTION

07-29-91	07:11	1595.0	68242	0326-01	0	4
RVA-# BS	3.0					
BIT (IN)	16					
CAL-X (IN)	16					
SP (MV)	100					
R-LL (Q-M)	20					
R-ILM (Q-M)	20	-27				3
R-ILD (Q-M)	20	175	BCS AT			75
SP (MV)	100			10000 TENS (LB)		0

DUAL INDUCTION AFTER SURVEY CALIBRATION

TOOL TYPE: DIL-FA SERIAL NO: 05512

	BEFORE	AFTER	BEFORE	AFTER	UNITS
ILD	0.0	0.0	401.0	401.0	MMHO/M
ILM	0.0	0.0	464.0	463.0	MMHO/M
LL RES	20.0	20.1	1500.0	1496.1	DHM-M
LL COND	0.267	0.267	20.0	20.1	DHM-M

ILM SONDE ERROR CORRECTION: 1.06 MMHO/M  
ILM SONDE ERROR CORRECTION: -3.89 MMHO/M

DUAL INDUCTION BEFORE SURVEY CALIBRATION

TOOL TYPE: DIL-FA SERIAL NO: 05512

	MEASURED	LOW	HIGH	LOW	HIGH	UNITS
ILD	0.2	401.8	0.0	401.8	401.0	MMHO/M
ILM	5.5	465.2	0.0	464.0	460.0	MMHO/M
LL RES	20.7	1499.2	20.0	1500.0	1496.1	DHM-M
LL COND	0.267	20.7	0.267	20.0	20.0	DHM-M

ILM SONDE ERROR CORRECTION: 1.06 MMHO/M  
ILM SONDE ERROR CORRECTION: -3.89 MMHO/M

GAMMA RAY BEFORE SURVEY CALIBRATION

TOOL TYPE: UGR-HA SERIAL NO: 03231

	BACKGROUND	CALIBRATOR	STANDARD	UNITS
	131.6	1012.4	218.0	GAPI
	DELTA COUNTS PER SEC: 880.8	CPS/API = 4.040		

CALIPER BEFORE SURVEY CALIBRATION

TOOL TYPE: XCA-CD SERIAL NO: 09076

	MEASURED	SMALL	LARGE	UNITS	CALIBRATED	SMALL	LARGE	UNITS
CALX	6.81	13.87		IN	7.00	14.00		IN

DUAL INDUCTION SHOP CALIBRATION

TOOL TYPE: DIL-FA SERIAL NO: 05512

	TEST LOOP CALIBRATION				INTERNAL CALIBRATION					
	MEASURED	LOW	HIGH	ZERO	MEASURED	LOW	HIGH	ZERO	CAL	UNITS
ILD	-5.0	394.3	0.0	480.0	-4.0	397.5	0.0	481.8		MMHO/M
ILM	5.6	465.2	0.0	464.0	1.7	461.4	0.0	464.0		MMHO/M

ILM SONDE ERROR CORRECTION: 1.06 MMHO/M  
ILM SONDE ERROR CORRECTION: -3.89 MMHO/M