



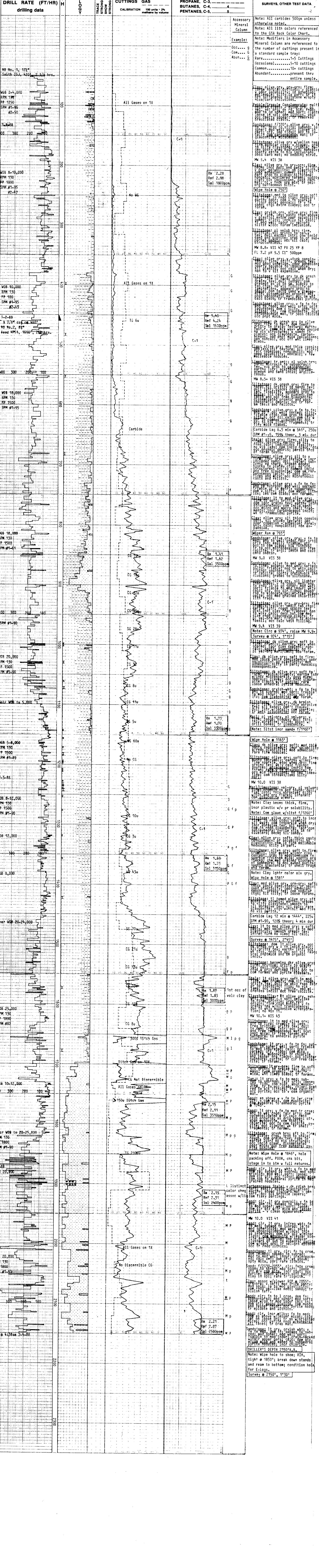
WELL LOGGING, INC.

COMPANY ARCO OIL and GAS Co.
WELL CC # 44-27-65
FIELD MIST
LOCATION 409'N and 376'W from the SE corner of Sec. 27, T6N, R5W
COUNTY, STATE Columbia, Oregon
API WELL NO:
ELEVATION 961'G.L. 971'K.B.
DATES FROM 6-30-88 TO 7-4-88
DEPTHS FROM 50'K.B. TO 2150'K.B.
SPUD DATE 6-30-88
DRILLING CONTRACTOR Paul Graham Rig #4
MUD COMPANY Barold
LOGGING GEOLOGISTS John Day Jim Eastes

Table with 4 columns: ABBREVIATIONS, CASING RECORD, HOLE SIZE, and a legend for rock types (SAND/SANDSTONE, CLAY, LIMESTONE, TUFF, LIGNITE, SHALE, DIATOMITE, DOLOMITE, FOSSIL, GLAUCONITE, SILTSTONE, CONGLOMERATE, BASALT, MICA, PYRITE).

OIL BASED ON LIVE OIL IN UNWASHED CUTTINGS AND PERCENT STAINING AND FLUORESCENCE OF WASHED SAMPLES.

PENETRATION ANALYSIS OF RETURNS REMARKS



DRILLER'S DEPTH 2150'K.B.
Note: Wide hole to shoe; RH, tight at 1850'; break down stands and ream to bottom; condition hole for E-logs.
Survey @ 2150', 1'30'