

**DUAL INDUCTION  
FOCUSED LOG**

FILE NO. 29226  
COMPANY **PRCO OIL & GAS**  
WELL **C.C. (C. E. R.) 23-16-64**  
API NO. **H181**  
FIELD **H181**  
COUNTY **COLUMBIA** STATE **OREGON**  
2" = 100'

LOCATION: **1644' NORTH & 2170' 4" EAST OF THE  
SOUTHWEST CORNER OF:**  
SECTION **16** T16P34 R3E44  
OTHER SERVICES  
BHC RL-CR-CR  
ELEVATIONS  
KB **1056.81'**  
OF **---**  
CL **1046.81'**

PERMITS: **---**  
GROUND LEVEL **---** ELEV. **1046.8**  
LOGGING MEASURED FROM **K. B. 10** FT. ABOVE P.O.  
DRILLING MEASURED FROM **K. B. 10** FT. ABOVE P.O.

DATE **10/05/88**  
RUN **1**  
SERVICE ORDER **159110**  
DEPTH-DRILLER **1775'**  
DEPTH-LOGGER **1773'**  
BOTTOM LOGGED INTERVAL **1771'**  
TOP LOGGED INTERVAL **817'**  
CASING - DRILLER **9 5/8"** Ø **820'**  
CASING - LOGGER **8 1/2"** Ø **817'**  
BIT SIZE **8 1/2"**

TYPE FLUID IN HOLE **---**  
DENSITY / VISCOSITY **10.0** / **45**  
PH / FLUID LOSS **9.0** / **6.0**  
SOURCE OF SAMPLE **---**  
RN AT WERS. T16P34 **---** Ø **4.53**  
RMC AT WERS. T16P34 **---** Ø **4.53**  
RN AT WERS. T16P34 **---** Ø **4.53**  
SOURCE OF RMC / RMI **---** Ø **4.53**  
RN AT WERS. T16P34 **---** Ø **4.53**  
TIME SINCE CIRCULATION **---** Ø **4.53**  
MAX. REC. TEMP. (M.C.) **---** Ø **4.53**  
EQUIP. NO. / LOG. **---** Ø **4.53**  
RECORDED BY **---** Ø **4.53**  
MIXED BY **---** Ø **4.53**

RECORDED BY **J. M. THOMPSON**

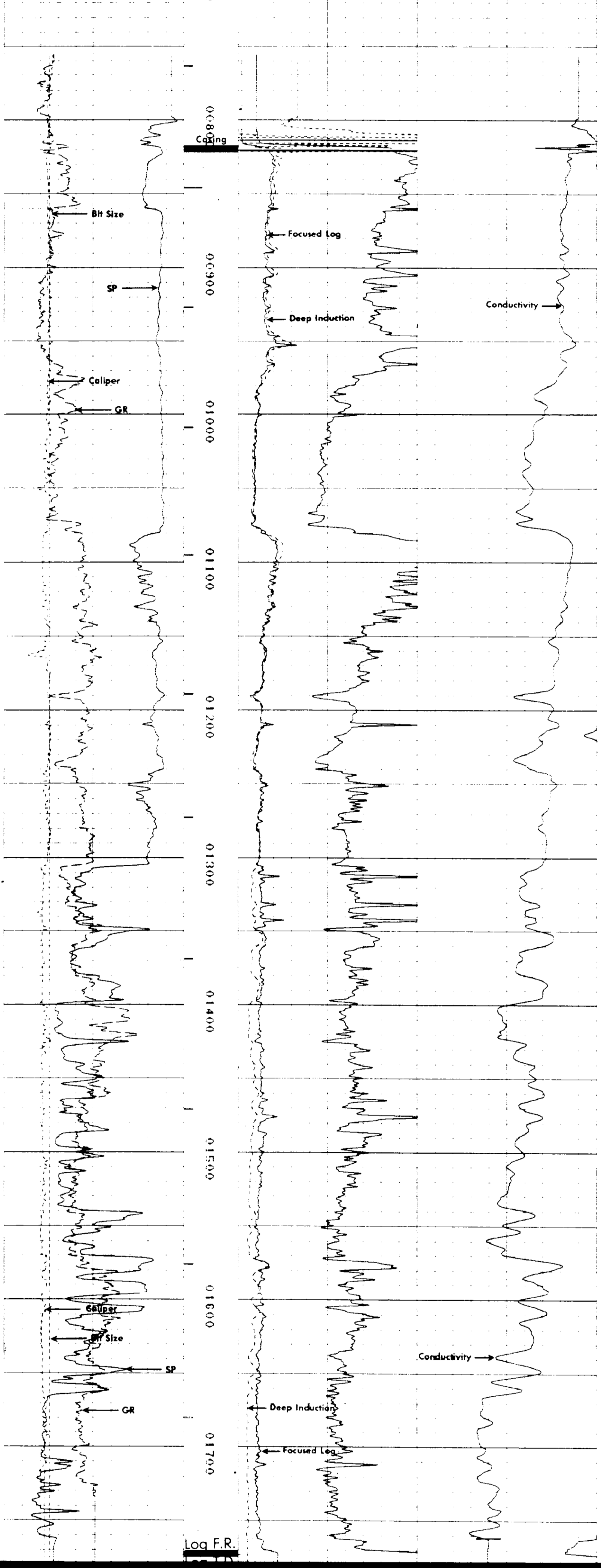
IN MAKING INTERPRETATIONS OF LOGS OUR  
EMPLOYEES WILL GIVE CUSTOMER THE BENEFIT  
OF THEIR BEST JUDGMENT, BUT SINCE  
THE INTERPRETATIONS ARE OPINIONS BASED  
ON INFORMATION FROM ELECTRICAL OR OTHER  
MEASUREMENTS, WE CANNOT AND WE DO NOT  
GUARANTEE THE ACCURACY OR CORRECTNESS  
OF ANY INTERPRETATION. WE SHALL NOT BE  
LIABLE OR RESPONSIBLE FOR ANY LOSS,  
DAMAGE, INJURY, OR EXPENSES WHATSOEVER  
INCURRED OR SUSTAINED BY THE CUSTOMER  
RESULTING FROM ANY INTERPRETATION MADE  
BY ANY OF OUR EMPLOYEES.

**FINAL PRINT**

VOLUME COMPUTED FOR 7" CASING

**EQUIPMENT DATA**

RUN	TRIP	TOOL	SERIAL NO.	SERIES NO.	POSITION
1	1	DIFL	33304	1503XA	1.5" S.O.
1	1	AC	79726	1609-1603	CENT.
1	1	GR	60484	1309XA	CENT.
1	1	CAL	79092	4209XA	CENT.



**REPEAT SECTION**

