

EPOCH

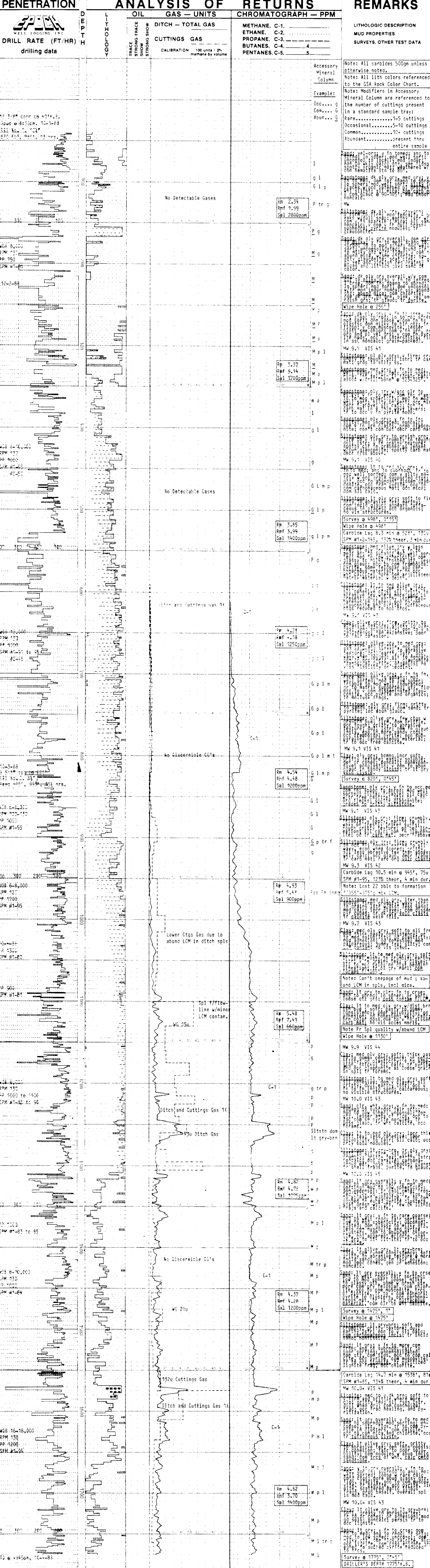
WELL LOGGING, INC.

COMPANY ARCO OIL and GAS CO.
WELL CFI CER # 23-16-64
FIELD Mist
LOCATION 1645'N and 2170'E from the SW corner of section 16, 16N-R4W.
COUNTY, STATE Columbia, Oregon
API WELL INDEX NO.
ELEVATION 1047'G.L. 1057'K.B.
DATES FROM 10-1-88 TO 10-4-88
DEPTHS FROM 40'K.B. TO 1775'K.B.
SPUD DATE
DRILLING CONTRACTOR Paul Graham, Rig #4
MUD COMPANY Baroid
LOGGING GEOLOGISTS John Day Jim Fastes

ABBREVIATIONS		CASING RECORD	
NB BIT	MW MUD WEIGHT	9 5/8" AT 820'K.B.	
RRB RERUN BIT	VIS FUNNEL VISCOSITY	AT	
RTB RE-TIP BIT	PV PLASTIC VISCOSITY	AT	
CB CORE BIT	YP YIELD POINT	AT	
T.G TRIP GAS	FL FLUID LOSS (cc/30 min)	AT	
S.G. SURVEY GAS	CL PPM CHLORIDE ION	HOLE SIZE	
W.G. WIPEER GAS	RM MUD RESISTIVITY	12 1/2" AT 820'K.B.	
C.G. CONNECTION GAS	RF FILTRATE RESISTIVITY	8 1/2" AT 1775'K.B.	
WOB WEIGHT ON BIT	LAT LOGGED AFTER TRIP	AT	
RPM ROTARY REV/MIN	NR NO RETURNS	AT	
PP PUMP PRESSURE	PR POOR RETURNS	AT	
SPM STROKES/MIN	MUD TYPE E-2 Mud	AT	

<input checked="" type="checkbox"/> SAND/SANDSTONE	<input type="checkbox"/> CLAY	<input checked="" type="checkbox"/> LIMESTONE	<input type="checkbox"/> TUFF	<input type="checkbox"/> LIGNITE
<input type="checkbox"/> SHALE	<input type="checkbox"/> DIATOMITE	<input checked="" type="checkbox"/> DOLOMITE	<input type="checkbox"/> FOSSIL	<input type="checkbox"/> GLAUCONITE
<input type="checkbox"/> SILTSTONE	<input type="checkbox"/> CONGLOMERATE	<input type="checkbox"/> BASALT	<input type="checkbox"/> MICA	<input type="checkbox"/> PYRITE

OIL: BASED ON LIVE OIL IN UNWASHED CUTTINGS AND PERCENT STAINING AND FLUORESCENCE OF WASHED SAMPLES.



DRILLER'S DEPTH 1775'K.B.