

Schlumberger

2" LITHO-DENSITY/NEUTRON/GR

CSU

COMPANY: REICHHOLD ENERGY CORPORATION

WELL: CZ 31-16

FIELD: PITTSBURG

COUNTY: COLUMBIA

STATE: OREGON

NATION: USA

LOCATION: 948-63 'S & 2479.46 'W

SECT: DF NE COR

TWP: 5N

RGE: 4M

PERMANENT DATUM: GL

ELEV. OF PERM. DATUM: 838.2 F

LOG MEASURED FROM: KB

DRLG. MEASURED FROM: KB

DATE: 26 JUL 85

RUN NO: 1

DEPTH-DRILLER: 2867.0 F

DEPTH-LOGGER: 2860.0 F

TOP LOG INTERVAL: 1860.0 F

CASING-DRILLER: 403 F

CASING-LOGGER: 408 F

BIT SIZE: 8 5/8

DEPTH: 2867 F

OTHER SERVICES-
DIL SLT
HOTPROGRAM
TAPE NO:
SERV NO:
ORDER NO:
432338

TYPE FLUID IN HOLE: GELL LIGNO
 DENSITY: 10.0 LB/G
 VISCOSITY: 56.0 S
 PH: 9.0
 FLUID LOSS: 6.2 C3
 SOURCE OF SAMPLE: FLOWLINE
 RM: 1.720 DHMM AT 80.0 DEGF
 RMC: 1.370 DHMM AT 81.0 DEGF
 RMC: 1.580 DHMM AT 85.0 DEGF
 SOURCE RMF/RMC: MEAS/MEAS
 RM AT BHT: 1.360 DHMM AT 103. DEGF
 RMC AT BHT: 1.096 DHMM AT 103. DEGF
 RMC AT BHT: 1.321 DHMM AT 103. DEGF

TIME CIRC. STOPPED: 0530 7/26
 TIME LOGGER ON BTM.: 11:50 7/26

MAX. REC. TEMP: 103.0 DEGF

LOGGING UNIT NO: 8126
 LOGGING UNIT LOC: SACRAMENTO
 RECORDED BY: KUNKLER
 WITNESSED BY: THOMAS

REMARKS:

ZONE OF INTEREST AT APPROX. 2160 TO 2210 FT.

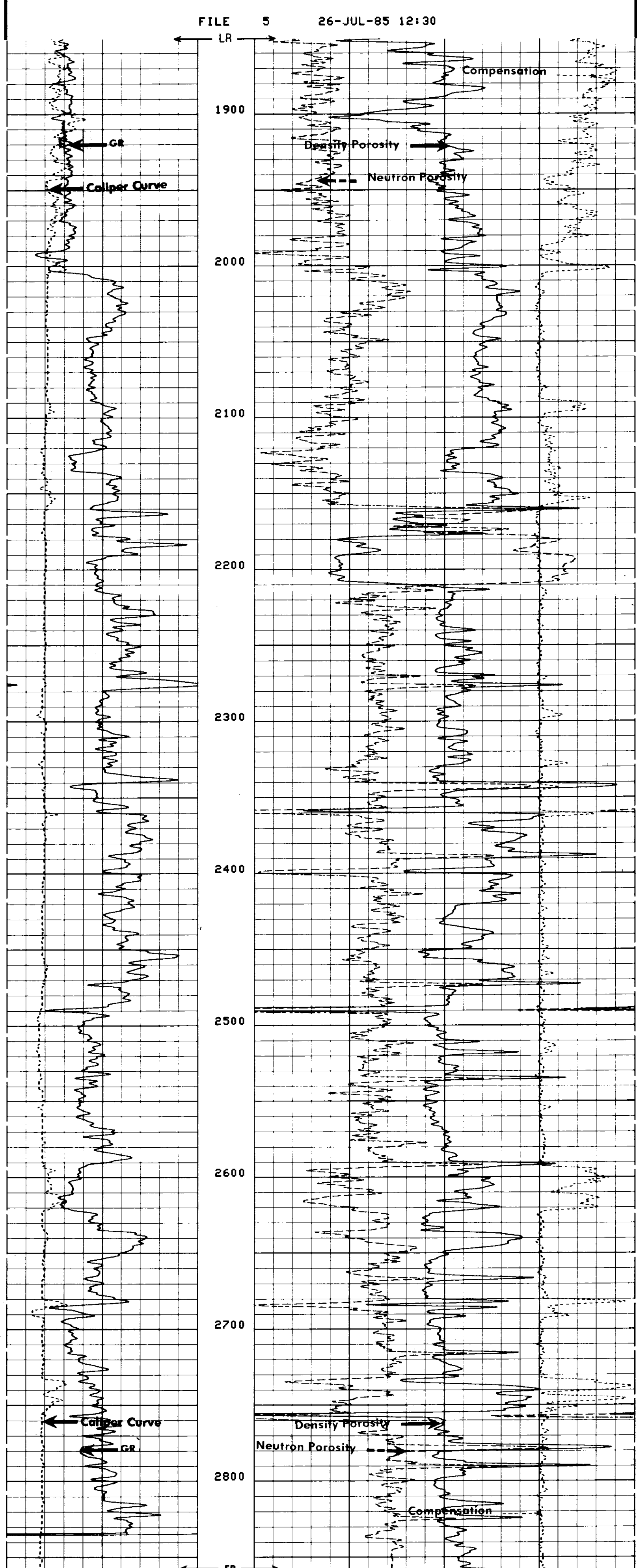
EQUIPMENT NUMBERS-

DRS 3756 PGD 2933 NSC 1760 PDH 2706
 CNC HA 241 SGC SA 680

ALL INTERPRETATIONS ARE OPINIONS BASED ON INFERENCES FROM ELECTRICAL OR OTHER MEASUREMENTS AND WE CANNOT, AND DO NOT GUARANTEE THE ACCURACY OR CORRECTNESS OF ANY INTERPRETATIONS, AND WE SHALL NOT, EXCEPT IN THE CASE OF GROSS OR WILLFUL NEGLIGENCE ON OUR PART, BE LIABLE OR RESPONSIBLE FOR ANY LOSS, COSTS, DAMAGES OR EXPENSES INCURRED OR SUSTAINED BY ANYONE RESULTING FROM ANY INTERPRETATION MADE BY ANY OF OUR OFFICERS, AGENTS OR EMPLOYEES. THESE INTERPRETATIONS ARE ALSO SUBJECT TO OUR GENERAL TERMS AND CONDITIONS AS SET OUT IN OUR CURRENT PRICE SCHEDULE.

FILE 8 26-JUL-85 13:11
 DATA ACQUIRED 00-00 00:00

CALI(IN.)		DPHI		DRHQ(G/C3)	
6.0000	16.0000	.60000		-.2500	.25000
GR (GAPI)		NPHI			
0.0	150.00	.60000			0.0



FILE 5 26-JUL-85 11:55

CALI(IN.)		DPHI		DRHQ(G/C3)	
6.0000	16.0000	.60000		-.2500	.25000
GR (GAPI)		NPHI			
0.0	150.00	.60000			0.0

SENSOR MEASURE POINT TO TOOL ZERO

STSG 27.6 FEET	GR 32.2 FEET
NCNL 23.2 FEET	SCNL 23.2 FEET
SS2 2.0 FEET	FCNL 23.2 FEET
LITH 2.5 FEET	SSI 2.0 FEET
LU 2.5 FEET	LS 2.5 FEET
CALI 2.6 FEET	LL 2.5 FEET
NRAT 23.2 FEET	TENS -.9 FEET

PARAMETERS

NAME	VALUE	UNIT	NAME	VALUE	UNIT
SHT	80.0000	DEGF	TD	2867.00	F
HC	CALI		PSNR	2.27500	
FD	1.00000	G/C3	MATR SAND		
WMUD	8.00000	LB/G	MDEN	2.65000	G/C3
DHC	NONE		LPCS	TWIN	