

COMPANY: REICHHOLD ENERGY CORPORATION
 WELL: CZ 31-16
 FIELD: PITTSBURGH
 COUNTY: COLUMBIA
 STATE: OREGON
 NATION: USA
 LOCATION: 948.63 'S & 2479.46 'W
 SEC: 16
 T1P: 5N
 RGE1 4M

PERMITS: PERM. NO.: 899.2 F
 ELEV. OF PERM. DATUM: 899.2 F
 LOG MEASURED FROM: KB
 DRUG. MEASURED FROM: KB
 ELEVATIONS: ELEV. OF PERM. DATUM: 899.2 F
 LOG MEASURED FROM: KB
 DRUG. MEASURED FROM: KB

DATE: 26 JUL 85
 RUN NO: 1

DEPTH-DRILLER: 2867.0 F
 DEPTH-LOGGER: 2860.0 F
 BIT. LOG INTERVAL: 2828.0 F
 TOP LOG INTERVAL: 408.0 F
 CASING-DRILLER: 403 F
 CASING-LOGGER: 408 F
 CASING: 8 5/8
 BIT SIZE: 7 7/8
 DEPTH: 2867 F

OTHER SERVICES:-
 FDC CNL GR
 HDT
 DIL

PROGRAM:
 TAPEN
 NO: 432338
 SERVICE
 ORDER NO:

TYPE FLUID IN HOLE: GELL LIQND
 DENSITY: 10.0 LB/G
 VISCOSITY: 56.0 S
 PH: 9.0
 FLUID LOSS: 6.2 C3
 SOURCE OF SAMPLE: FLOWLINE
 RM: 1.720 DHMM AT 80.0 DEGF
 RMF: 1.370 DHMM AT 81.0 DEGF
 RMC: 1.580 DHMM AT 85.0 DEGF
 SOURCE RMF/RMC: MEAS/MEAS
 RM AT BHT: 1.398 DHMM AT 100. DEGF
 RMF AT BHT: 1.126 DHMM AT 100. DEGF
 RMC AT BHT: 1.358 DHMM AT 100. DEGF

TIME CIRC. STOPPED: 0530 7/26
 TIME LOGGER ON BTM.: 8:40 7/26

MAX. REC. TEMP: 100.0 DEGF

LOGGING UNIT NO: 8126
 LOGGING UNIT LDC: SACRAMENTO
 RECORDED BY: KUNKLER
 WITNESSED BY: THOMAS

REMARKS:
 CENTRALIZERS AND STANDOFFS USED
 DIL AND SLT RUN IN COMBO

EQUIPMENT NUMBERS-

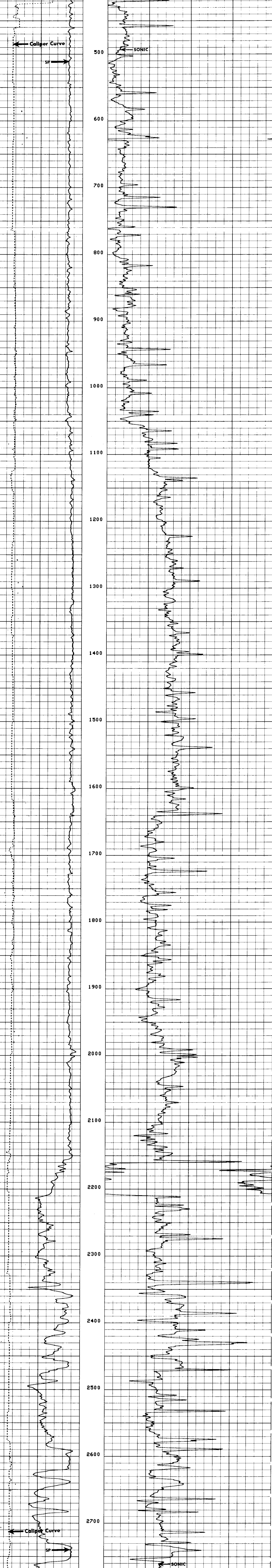
DIS 1422 DIC 1149 SLS 1082 SLC 1259
 MCD 1186

ALL INTERPRETATIONS ARE OPINIONS BASED ON INFERENCES FROM ELECTRICAL OR OTHER MEASUREMENTS AND WE CANNOT, AND DO NOT GUARANTEE THE ACCURACY OR CORRECTNESS OF ANY INTERPRETATIONS, AND WE SHALL NOT, EXCEPT IN THE CASE OF GROSS OR WILLFUL NEGLIGENCE ON OUR PART, BE LIABLE OR RESPONSIBLE FOR ANY LOSS, COSTS, DAMAGES OR EXPENSES INCURRED OR SUSTAINED BY ANYONE RESULTING FROM ANY INTERPRETATION MADE BY ANY OF OUR OFFICERS, AGENTS OR EMPLOYEES. THESE INTERPRETATIONS ARE ALSO SUBJECT TO OUR GENERAL TERMS AND CONDITIONS AS SET OUT IN OUR CURRENT PRICE SCHEDULE.

FILE 7 26-JUL-85 10:31
 DATA ACQUIRED 26-JUL-85 09:35

CAL (IN) 6.0000 16.000
 SP (MV) -200.0 0.0 DT (US/F) 150.00 50.000

FILE 7 26-JUL-85 09:49
 DATA ACQUIRED 26-JUL-85 09:35



FILE 7 26-JUL-85 09:45
 DATA ACQUIRED 26-JUL-85 08:49

CAL (IN) 6.0000 16.000
 SP (MV) -200.0 0.0 DT (US/F) 150.00 50.000

SENSOR MEASURE POINT TO TOOL ZERO

CBL	37.0	FEET	AMPL	37.0	FEET
TT3	33.3	FEET	TT4	32.3	FEET
TT1	36.0	FEET	TT2	37.0	FEET
CALI	56.1	FEET	SRAT	34.5	FEET
SFL	6.4	FEET	ILD	9.4	FEET
SP	2.5	FEET	ILM	5.7	FEET
TENS	2.5	FEET	SPAR	2.5	FEET
NOIS	28.8	FEET			

PARAMETERS

NAME	VALUE	UNIT	NAME	VALUE	UNIT
HSV1	WF1		DWS	16	US
DSIN	5	US	DDEL	200	US
CDTS	100.000	US/F	DWCD	512	US/F
DT	189.000	DHMM	DTM	56.0000	MMHD
SBR	1.00000		DSEC	4.30000	MMHD
FPHI	SPHI		MSEC	6.20000	
BS	7.87500	IN	BHS	OPEN	
PP	NDRM		DD	0.0	F

TAPE NDT MADE