

Well Name: "Golden" Everson #41-35-75
 COMPANY: Nahama & Weagant Energy Company
 LOCATION: 912 87'S AND 1287 33"W
 COUNTY: Columbia STAT: Oregon
 FIELD: Mist
 PERMIT NO. 36-009-00308
 Log Measured From: 481 to 1521.7 F
 Log Measured To: 481 to 1521.7 F
 Date: 22-JUN-1993
 Drilling: 22-JUN-1993
 Depth Interval: 3327.0 F
 Bitum. Log Interval: 8' 6" to 1022.0 F
 Top Log Interval: 8' 6" to 1022.0 F
 Running Time: 9:40 LRIC
 Casing-Outer: 9 5/8" @ 1022.0 F
 Casing-Inner: 9 1/2" @ 3331.0 F
 Tool Joint: 3 1/2" @ 3331.0 F
 Log Measured From: 481 to 1521.7 F
 Log Measured To: 481 to 1521.7 F
 Date: 22-JUN-1993
 Drilling: 22-JUN-1993
 Depth Interval: 3327.0 F
 Bitum. Log Interval: 8' 6" to 1022.0 F
 Top Log Interval: 8' 6" to 1022.0 F
 Running Time: 9:40 LRIC
 Casing-Outer: 9 5/8" @ 1022.0 F
 Casing-Inner: 9 1/2" @ 3331.0 F
 Tool Joint: 3 1/2" @ 3331.0 F
 Log Measured From: 481 to 1521.7 F
 Log Measured To: 481 to 1521.7 F

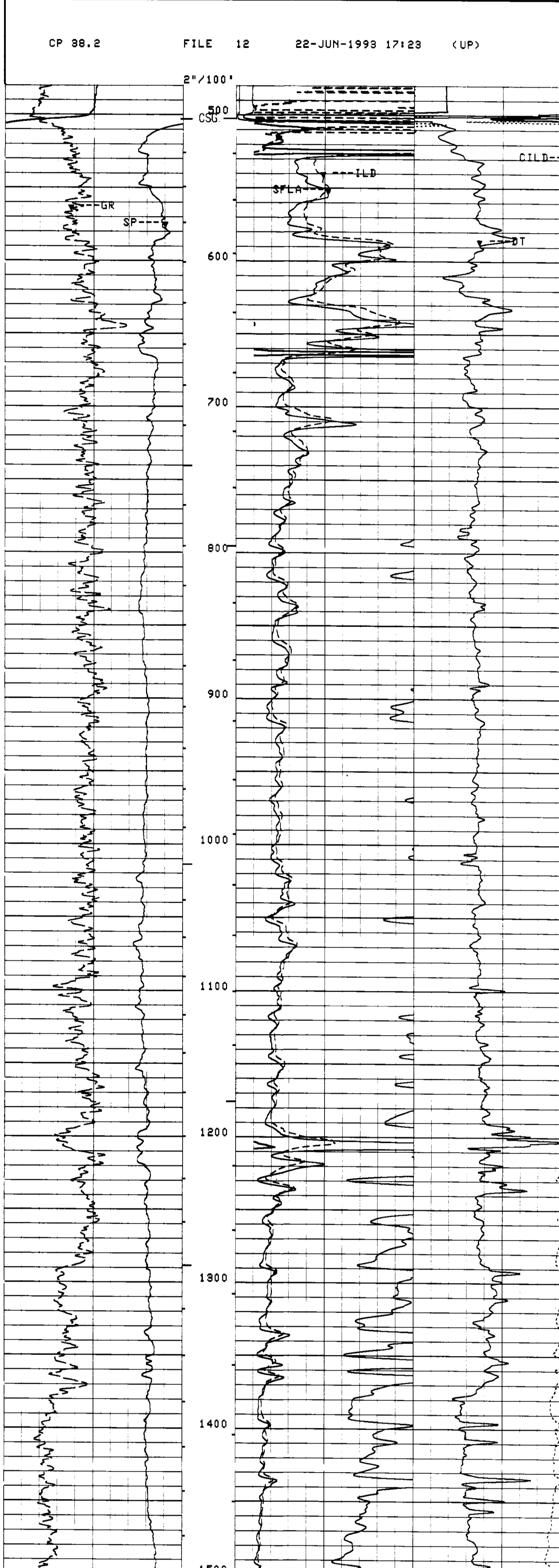
The well name, location and borehole reference data were furnished by the customer.
 All interpretations are opinions based on inferences from electrical or other measurements and we cannot, and do not guarantee the accuracy or correctness of any interpretations, and we shall not, except in the case of gross or willful negligence on our part, be liable or responsible for any loss, cost, damages or expenses incurred or sustained by anyone resulting from any interpretations made by any of our officers, agents or employees. These interpretations are also subject to Clause 4 of our General Terms and Conditions as set out in our current Price Schedule.

Run No.	ONE
Service Order No.	824488
Drilling Fluid Level	5.0 F
Salinity	200.0 PPM
Rms @ BHT	3884 OHMM @ 88.0 DEGF
Rms @ BHT	2878 OHMM @ 88.0 DEGF
Logging Speed	3800.0 F/H

EQUIPMENT DATA	
Tool Number 1	DI-8C 342
Tool Number 2	DIC-DA 386
Tool Number 3	MCD-DA 888
Tool Number 4	SLC-MA 88
Tool Number 5	SLC-WC 1336
Tool Number 6	SGC-C 3206
Tool Number 7	ISM-BD 304
Tool Number 8	SLM-DA 443
Tool Number 9	SLM-BC 418
Tool Number 10	
Tool Number 11	
Tool Number 12	

REMARKS:

LOGGING TOOL STRING SKETCH



MAIN LOG

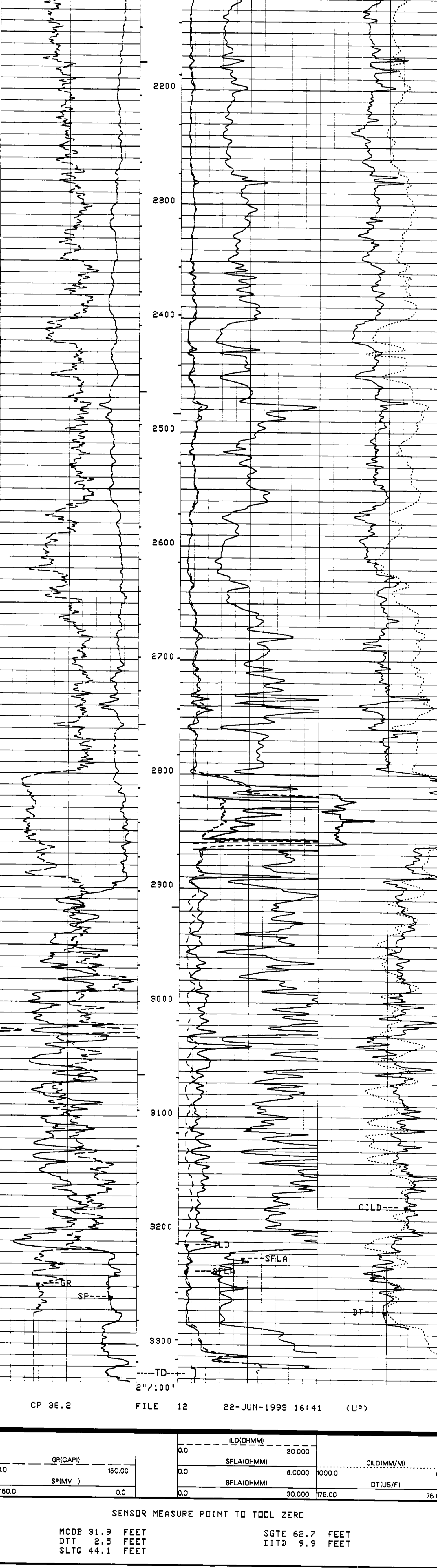
ACCUMULATED INTEGRATION VALUES SUMMARY:

Integrated Hole Volume:	989,764 F3	FROM 3331.00 F	TO 502.000 F
Integrated Cement Volume:	677,308 F3	FROM 3331.00 F	TO 502.000 F
(ASSUMING 4.50000 IN D.D. CASING)			

EVENT MARK SUMMARY:

OUTPUT	INTERVAL BETWEEN PIPS	DEPTH TRACK EDGE
Integrated Hole Volume	10.0000 F3	LEFT EDGE
Integrated Cement Volume	10.0000 F3	RIGHT EDGE

GR(GAPI)	0.0	150.00		
SP(MV)	150.00	0.0		
ILD(OHMM)	0.0	30000		
SFLA(OHMM)	0.0	60000	1000.0	
SFLA(OHMM)	0.0	30000	175.00	
				DT(US/F)
				0.0
				76.000



SENSOR MEASURE POINT TO TOOL ZERO
 MCDB 31.9 FEET
 DIT 2.5 FEET
 SLTG 44.1 FEET
 SGTE 62.7 FEET
 DITD 9.9 FEET

PARAMETER	VALUE	UNIT
SMB - Sonic Memory Board	DISA	
VDLR - Defn not found	DISA	
TOCA - TO Correction Status	R-N	
RATE - Firing Rate	15	HZ
DG - Downhole Gain	/5	
DETE - Detection	E2	
MSG - Near Minimum Sliding Gate	180	US
CBLG - CBL Gate Height	35	US
AMPL - Sonic Amplitude	UT	
CBL - Cement Bond Log Amplitude	2	
WFM - Waveform Mode	1	
SS - Sweep Speed	FAST	
TOD - TO Delay	DISA	
DTF - Delta-T Fluid	189.000	US/F
DTM - Delta-T Matrix	56.0000	US/F
DTG - Delta-T Matrix	100.000	
CDTS - Correction for Delta-T Shale, Empirical	R-N	
SPFS - Sonic Porosity Formula Select	9.40000	LB/G
MUUD - Weight of Mud	7.90000	MM/M
MSEC - Medium Sonde Error Correction	1.00000	DHMM
SBR - Shoulder Bed Resistivity	6.40000	MM/M
DSEC - Deep Sonde Error Correction	4.50000	
FCD - Future Casing Diameter	GSRY	IN
NCJT - NGT Calibration Jig Type	SPH1	
NCFI - Formation Factor Formula Porosity	5/2	
DHCO - Digitizer Word Count	5	
DSDI - Digitizer Sample Interval	200	US
DDEL - Digitizing Delay	200	US
BS - Bit Size	7.87500	IN
BHS - Borehole Status (Open or Cased)	DPEN	

COMPANY: Nahama & Weagant Energy Company
 WELL: "Golden" Everson #41-35-75
 FIELD: Mist
 COUNTY: Columbia STAT: Oregon
 SCHL. FR: 3321.0 F
 SCHL. TD: 3327.0 F
 DLRL. TD: 3331.0 F
 Elev.: KB 1582.2 F
 OF
 QL 1521.7 F