



2 1/2" I.D.

DUAL INDUCTION
GUARD LOG

COMPANY REICHHOLD ENERGY CORPORATION
WELL CARDENZA 34-1

FIELD MIST
COUNTY COLUMBIA STATE OREGON

Location 651.83' NORTH AND 788.42' EAST FROM THE SOUTH QUARTER CORNER OF:
(W.B.&M.)
Twp. 6N Rge. 5W

Sec. 1
Elev. 1166.84
Elev. K 8 1178.34
D.L. 1166.84

Permanant Datum K.B. OR 11.5 Ft. Above Perm. Datum
Log Measured From K.B.
Date 11-13-81
Drilling Measured From

Run No. 2824
Depth—Driller 2826
Btm Log Inter. 2825

Top Log Liner 634
Casing—Driller 734 @ 634
Casing—Welex 634

Bit Size 6 1/4
Type Fluid in Hole LIQUID
Dens. Visc. 72.0 160.0
PH I Fluid Loss 10.5 17.2 ml
Source of Sample CIRCULATED

R₁ @ Meas. Temp 2.60 @ 50 °F
R₂ @ Meas. Temp 2.25 @ 50 °F
R₃ @ Meas. Temp 1.50 @ 48 °F
Source H₁—R₁ MEASURED
R₁ @ BHT 1.16 @ 112 °F
Time Since Circ. 2 HOURS
Max. Fac. Temp. 112 °F @ BHT
Equip. Location 2890 WOODLAND
Recorded By W.S.FARIT-CUNNER
Witnessed By ALGER

COMPANY REICHHOLD ENERGY CORPORATION
WELL CARDENZA 34-1

FIELD MIST
COUNTY COLUMBIA STATE OREGON

Location 651.83' NORTH AND 788.42' EAST FROM THE SOUTH QUARTER CORNER OF:
(W.B.&M.)
Twp. 6N Rge. 5W

Sec. 1
Elev. 1166.84
Elev. K 8 1178.34
D.L. 1166.84

Permanant Datum K.B. OR 11.5 Ft. Above Perm. Datum
Log Measured From K.B.
Date 11-13-81
Drilling Measured From

Run No. 2824
Depth—Driller 2826
Btm Log Inter. 2825

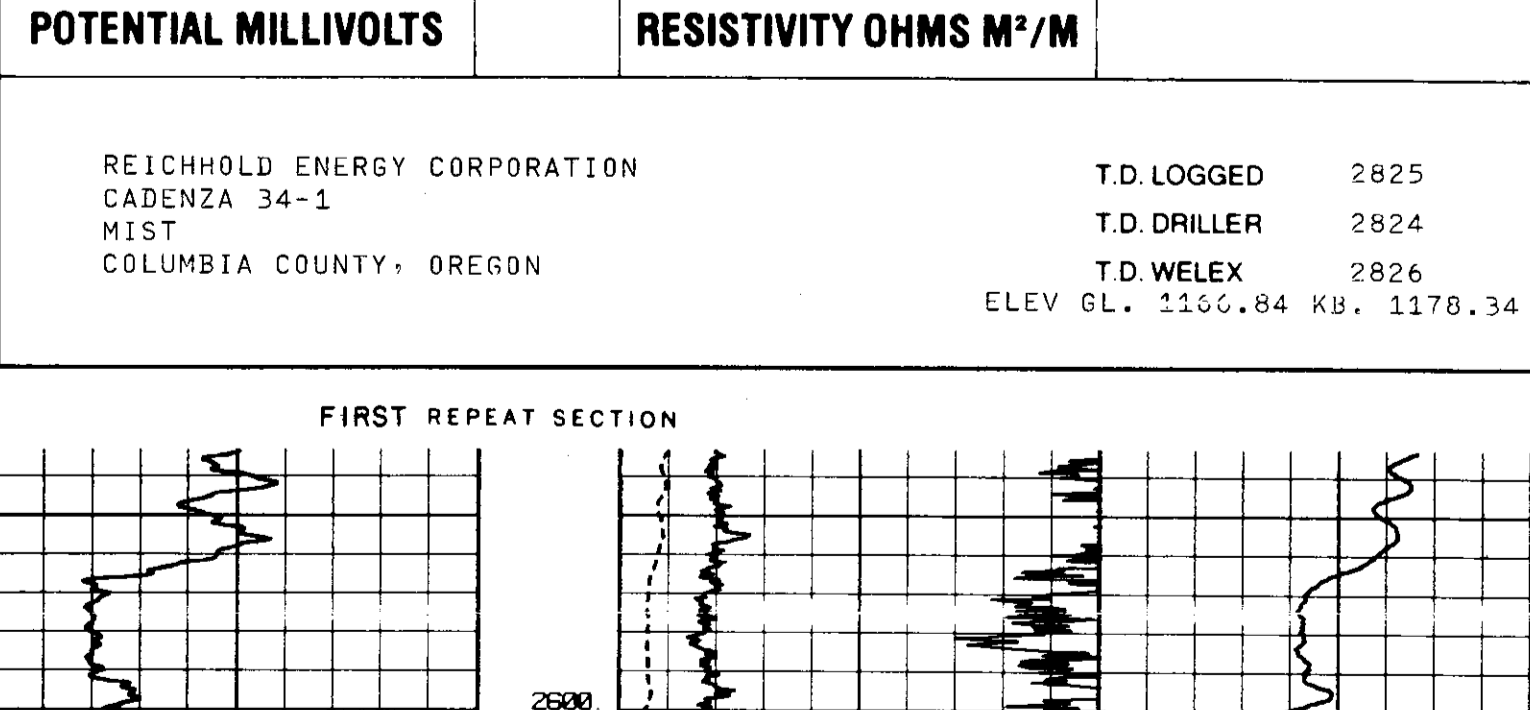
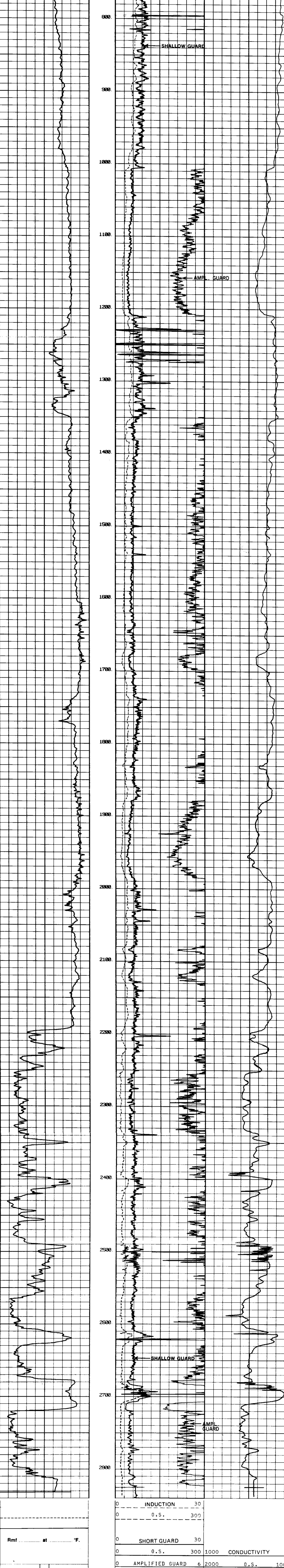
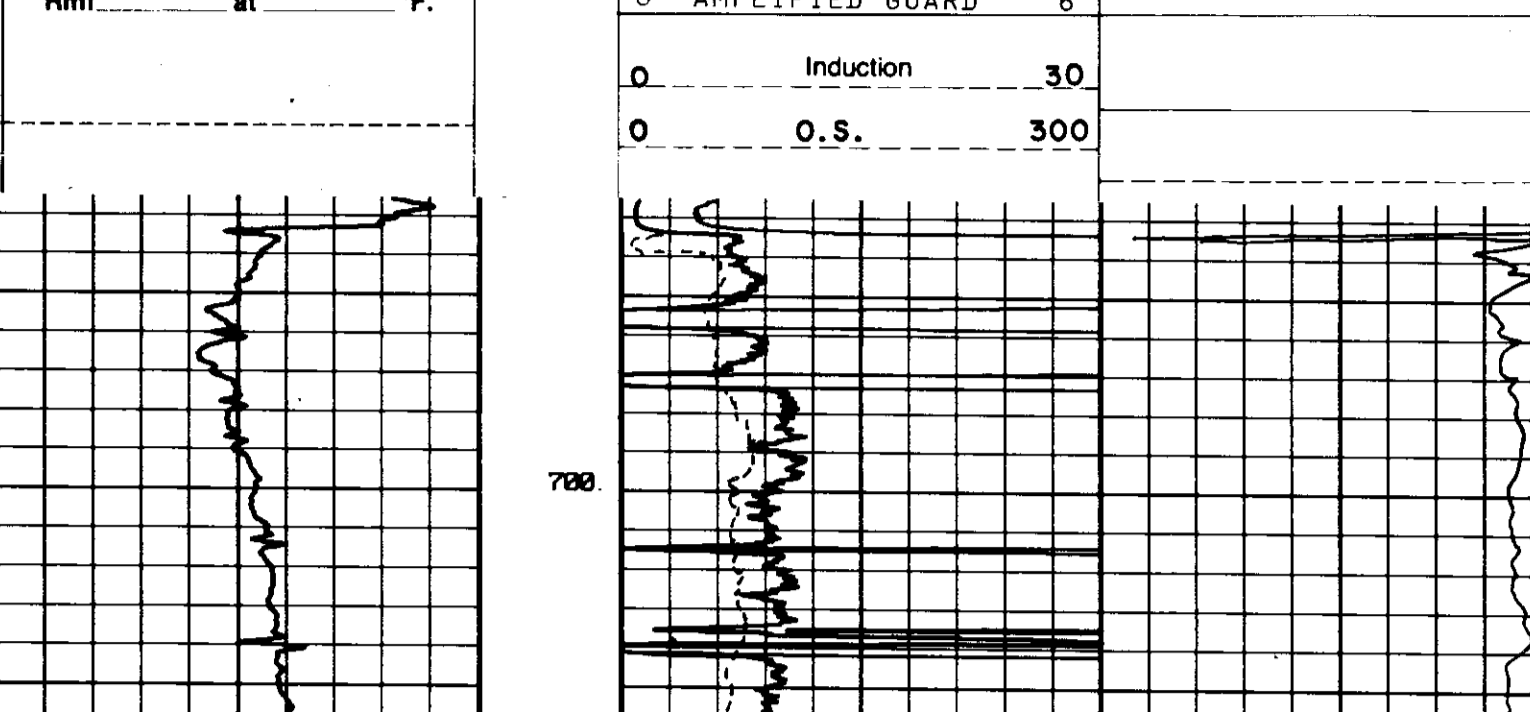
Top Log Liner 634
Casing—Driller 734 @ 634
Casing—Welex 634

Bit Size 6 1/4
Type Fluid in Hole LIQUID
Dens. Visc. 72.0 160.0
PH I Fluid Loss 10.5 17.2 ml
Source of Sample CIRCULATED

R₁ @ Meas. Temp 2.60 @ 50 °F
R₂ @ Meas. Temp 2.25 @ 50 °F
R₃ @ Meas. Temp 1.50 @ 48 °F
Source H₁—R₁ MEASURED
R₁ @ BHT 1.16 @ 112 °F
Time Since Circ. 2 HOURS
Max. Fac. Temp. 112 °F @ BHT
Equip. Location 2890 WOODLAND
Recorded By W.S.FARIT-CUNNER
Witnessed By ALGER

Change in Mud Type or Additional Samples		SCALE CHANGES							
Date	Sample No.	Type Log	Depth	Scale Up Hole	Scale Down Hole				
Depth—Driller									
Type Fluid in Hole									
Dens.	Visc.								
ph	Fluid Loss								
Source of Sample									
R ₁	@ Meas. Temp	@	°F	Run No.	Tool Type and No.	Pad Type	Tool Position	Other	
R ₂	@ Meas. Temp	@	°F	ONE	AVL 75375			CENTRALIZED	
R ₃	@ Meas. Temp	@	°F	ONE	DIG 25504			CENTRALIZED	
Source: R ₁ R ₂ R ₃									
R ₁	@ BHT	1.16	@ 112 °F	@	°F				
R ₂	@ BHT	1.00	@ 112 °F	@	°F				
R ₃	@ BHT	0.64	@ 112 °F	@	°F				
R. M. C.									

Well logs are not guaranteed for accuracy of any interpretation of log data, conversion of log data to physical rock parameters, or recommendations which may be given by Welex personnel or which may appear on the log or in any other form. Any user of such data, interpretations, conversions, or recommendations agrees that Welex is not responsible except where due to gross negligence or willful misconduct, for any loss, damages, or expenses resulting from the use thereof.



REICHHOLD ENERGY CORPORATION
CADENZA 34-1
MIST
COLUMBIA COUNTY, OREGON

T.D. LOGGED 2825
T.D. DRILLER 2824
T.D. WELEX 2826
ELEV GL. 1166.84 KB. 1178.34

