

COMPANY: DIAMOND SHAMROCK CORPORATION
 WELL: CLATSOP COUNTY #32-11
 FIELD: WEST MIST
 COUNTY: CLATSOP
 STATE: OREGON
 LOCATION: DF SE CORNER 1/4 6N
 11 1858' N & 1845' W
 RCE1 6H
 PERMANENT DATUM: GL
 ELEVATION: 928.0
 LOG MEASURED FROM: PERM. DATUM
 DRG. MEASURED FROM: KB
 OTHER SERVICES: DIL, BHC, FIC/CNL, SNGT, CST, MST

DEPTH-DRILLER: 4823.0
 DEPTH-LOGGER: 4823.0
 TD: LOG INTERVAL: 1000.0
 TD: LOG INTERVAL: 1000.0
 CASING-DRILLER: 1023.0
 CASING-LOGGER: 9.625
 BIT SIZE: 8.75
 BIT DEPTH: 4823.0

DATE: 1 JUN 1983
 RUN NO: 1

TYPE FLUID IN HOLE: KCL POLYMER
 DENSITY: 10.0 LB/G
 VISCOSITY: 45.0 S
 PH: 7.5
 FLUID LOSS: 6.8 C3
 SOURCE OF SAMPLE: CIRC
 RM: 0.170 DHMM AT 80.0 DEGF
 RMF: 0.164 DHMM AT 62.0 DEGF
 RMC: 0.533 DHMM AT 62.0 DEGF
 SOURCE RMF/RMC: MEAS./MEAS.
 RM AT BHT: 0.118 DHMM AT 118. DEGF
 RMF AT BHT: 0.090 DHMM AT 118. DEGF
 RMC AT BHT: 0.294 DHMM AT 118. DEGF

TIME CIRC. STOPPED: 1300
 TIME LOGGER ON BTM: 2045
 MAX. REC. TEMP: 118.0 DEGF
 LOGGING UNIT NO: 8128
 LOGGING UNIT LOC: SACRAMENTO
 RECORDED BY: ANDERSEN
 WITNESSED BY: SEELING

REMARKS:

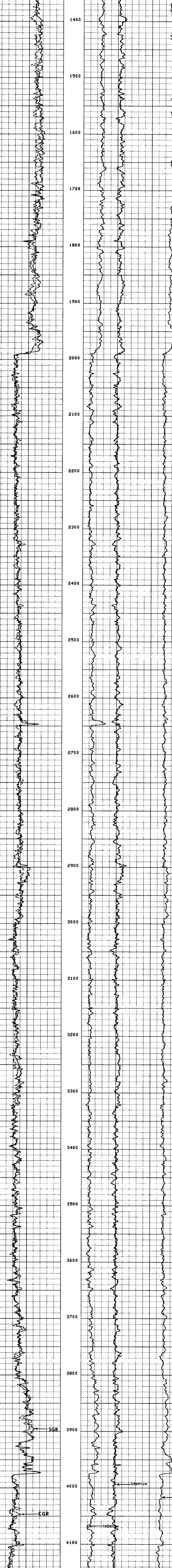
EQUIPMENT NUMBERS- NSM 952 NGT 775 CNC 1420 PGS 599
 PDH 1101 SLC 1589 MCD 663

ALL INTERPRETATIONS ARE OPINIONS BASED ON INFERENCE FROM ELECTRICAL OR OTHER MEASUREMENTS AND WE CANNOT, AND DO NOT GUARANTEE THE ACCURACY OR CORRECTNESS OF ANY INTERPRETATIONS, AND WE SHALL NOT, EXCEPT IN THE CASE OF GROSS OR WILLFUL NEGLIGENCE ON OUR PART, BE LIABLE OR RESPONSIBLE FOR ANY LOSS, COSTS, DAMAGES OR EXPENSES INCURRED OR SUSTAINED BY ANYONE RESULTING FROM ANY INTERPRETATION MADE BY ANY OF OUR OFFICERS, AGENTS OR EMPLOYEES. THESE INTERPRETATIONS ARE ALSO SUBJECT TO OUR GENERAL TERMS AND CONDITIONS AS SET FORTH IN OUR CURRENT PRICE SCHEDULE.

FILE 105

SGR (GAPI)	THOR (PPM)	POTAC
0.0 150.00	0.0 40.000 10.0	0.1000
CGR (GAPI)	URAN (PPM)	
0.0 150.00	-10.00 30.000	

CORRECTED GR FILE 104



FILE 104

SGR (GAPI)	THOR (PPM)	POTAC
0.0 150.00	0.0 40.000 10.0	0.1000
CGR (GAPI)	URAN (PPM)	
0.0 150.00	-10.00 30.000	

SENSOR MEASURE POINT TO TENSION REFERENCE POINT

FCNL 18.8 FEET	NCNL 18.8 FEET
MFDC 2.8 FEET	FFDC 2.8 FEET
TEH 0.0 FEET	CAL1 32.5 FEET
W4NG 32.5 FEET	W5NG 32.5 FEET
W2NG 32.5 FEET	W3NG 32.5 FEET
STAB 32.5 FEET	WING 32.5 FEET
NRAT 18.8 FEET	SGR 32.5 FEET

PARAMETERS

NAME	VALUE	UNIT	NAME	VALUE	UNIT
PSNR	2.19600		BS	8.75000	IN
MATR	SAND		HC	CALI	FEET
MDEN	2.65000	G/C3	FD	1.00000	G/C3
BHF	WATE		FDC	ALLO	
DD	0.0	F	BHS	OPEN	

CALIBRATION RECORD

COMPANY: DIAMOND SHAMROCK CORPORATION
 WELL: CLATSOP COUNTY #32-11
 FIELD: WEST MIST
 COUNTY: CLATSOP STATE: OREGON

SCHL FR 4216.0
 SCHL TD 4219.0
 DRLR TD 4223.0
 Elev: KB 940.0
 DF -
 GL 928.0