

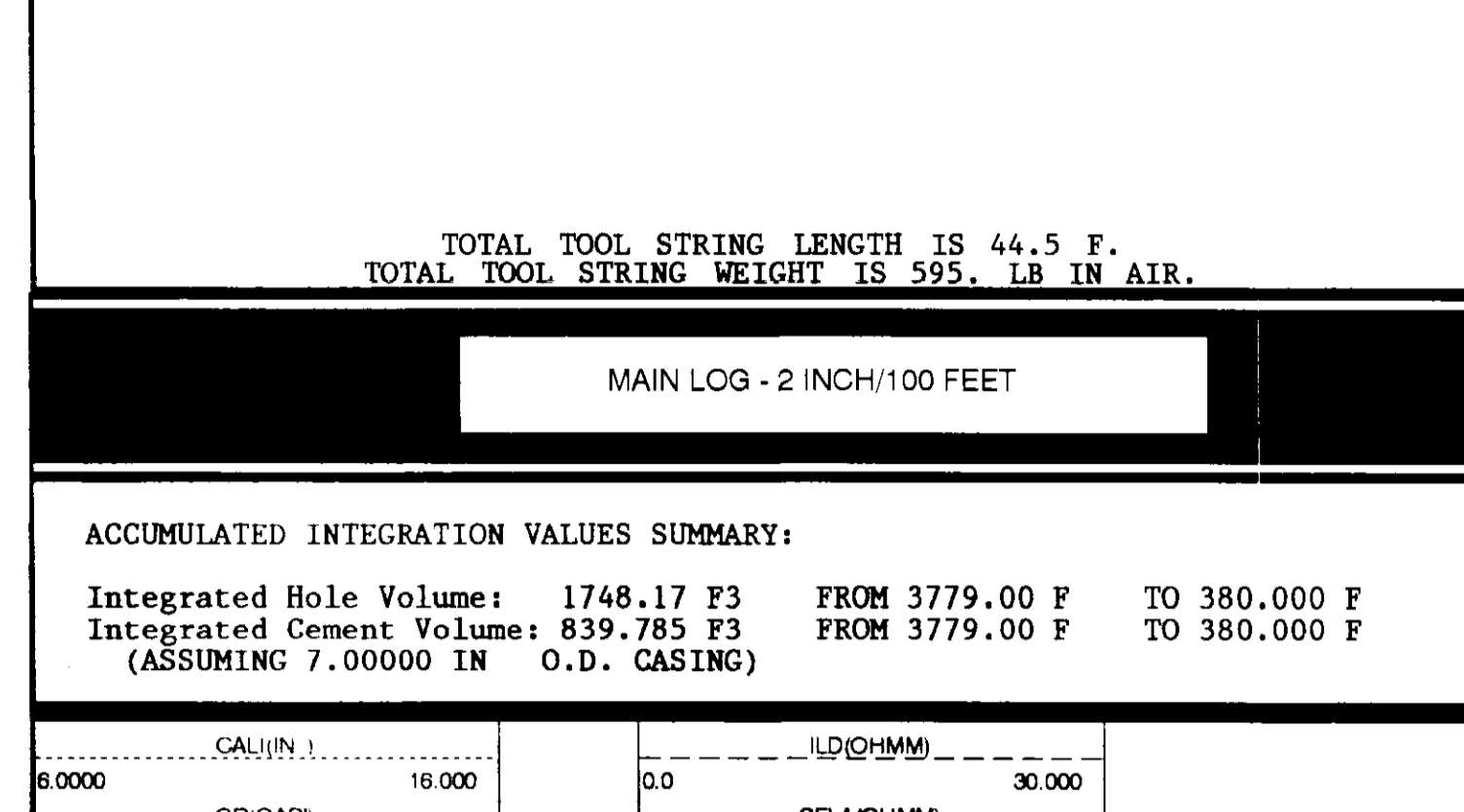
COMPANY CARBON ENERGY INT.
 WELL 'COOS COUNTY FOREST' #7-1
 FIELD WILD CAT
 COUNTY COOS STATE OREGON
 LOCATION 511.9N & 2151.7W
 'COOS COUNTY FOREST' #7-1
 FROM SE CORNER OF
 ADJ SERIAL NO. 36,011,00027
 SEC. 7 TWP. 13N R. 18E
 PERMIT MEASURED FROM 180 F ABOVE PERM. DEPTH
 LOG MEASURED FROM 15-COT 1890
 DATE 1993
 OTHER SERVICES:
 CTD/ST
 FLOW METER
 FMSCT

Run No. ONE
 Service Order No. 824380
 Drilling Fluid Level 5.0 F
 Salsity @ BHT 4.626 CHMM @ 98.0 DEGF @
 Rec @ BHT 2.412 CHMM @ 98.0 DEGF @
 Logging Speed 3800.0 FHR

EQUIPMENT DATA

Tool Number 1	DS-EB 1422
Tool Number 2	MCD-DA 883
Tool Number 3	SGC-JC 3206
Tool Number 4	IEM-BD 1349
Tool Number 5	NLM-BC 418
Tool Number 6	
Tool Number 7	
Tool Number 8	
Tool Number 9	
Tool Number 10	
Tool Number 11	
Tool Number 12	

REMARKS:
 TWO 1.5" STANDOFFS RUN ON INDUCTION TOOL
 THANK YOU FOR CHOOSING SCHLUMBERGER
 SOME WELLSITE INFORMATION NOT AVAILABLE AT WELL



TOTAL TOOL STRING LENGTH IS 44.5 F.
 TOTAL TOOL STRING WEIGHT IS 595. LB IN AIR.

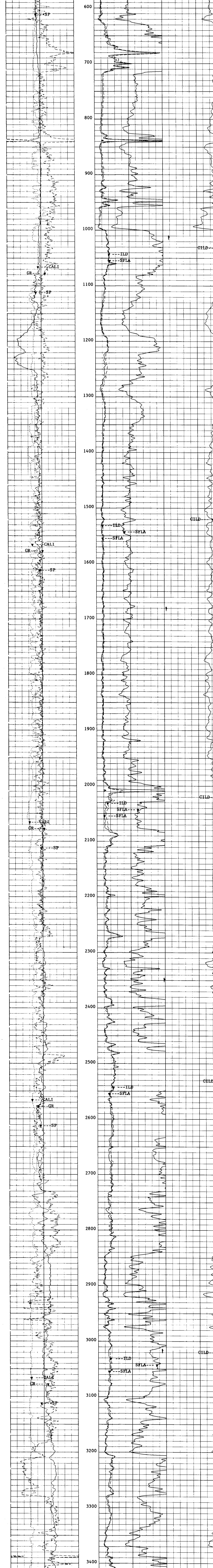
MAIN LOG - 2 INCH/100 FEET

ACCUMULATED INTEGRATION VALUES SUMMARY:

Integrated Hole Volume: 1748.17 F3 FROM 3779.00 F TO 380.000 F
 Integrated Cement Volume: 839.785 F3 FROM 3779.00 F TO 380.000 F
 (ASSUMING 7.00000 IN O.D. CASING)

CAL(V) 0.0000	GR(GAP) 16.000	ILD(CHMM) 0.0	SFLA(CHMM) 30.000	SFLA(CHMM) 0.0	CLD(MMM) 0.0
SP(MV) 100.0	0.0	SFLA(CHMM) 0.0	6.0000	30.000	1000.0

CP 38.2 FILE 6 15-OCT-1993 14:52 (UP)



CP 38.2 FILE 6 15-OCT-1993 13:54 (UP)

CAL(V) 0.0000	GR(GAP) 16.000	ILD(CHMM) 0.0	SFLA(CHMM) 30.000	SFLA(CHMM) 0.0	CLD(MMM) 0.0
SP(MV) 100.0	0.0	SFLA(CHMM) 0.0	6.0000	30.000	1000.0

SENSOR MEASURE POINT TO TOOL ZERO

CALI 31.9 FEET	GR 40.0 FEET
ILM 6.1 FEET	ILD 9.9 FEET
SP 2.5 FEET	SFLA 6.8 FEET
TENS 2.5 FEET	SPAR 2.5 FEET

PARAMETERS

PARAMETER	VALUE	UNIT
WMUD - Weight of Mud	9.10000	LB/G
MSEC - Medium Sonde Error Correction	6.90000	MM/M
SEK - Shoulder Bed Resistivity	1.00000	CHMM
DSEK - Deep Sonde Error Correction	4.20000	MM/M
FCD - Future Casing Diameter	7.00000	IN
NCJT - NCT Calibration Dig Type	GSRY	
BS - Bit Size	8.75000	IN
BHS - BoreHole Status (Open or Cased)	OPEN	

COMPANY CARBON ENERGY INT. SCHL FR 3773.0 F
 WELL 'COOS COUNTY FOREST' #7-1 SCHL TD 3779.0 F
 FIELD WILD CAT DRLR TD 3804.0 F
 COUNTY COOS STATE OREGON Elev. KB 548.0 F
 DF 547.0 F
 GL 530.0 F