

FORMATION LOG

EXPLORATION

11 125 SW W Oregon
 Benton
 Willamette Pet. Syn.
 Corvallis-1

WILLAMETTE PET. SYNDICATE
 (also as WILLAMETTE OIL & GAS CO.)
 "Corvallis"-1
 11 - 125 SW W,
 300'S, 2100'E from NW cor. sec. 11
 (in NE 1/4 NW 1/4 sec 11)
 Benton
 Oregon

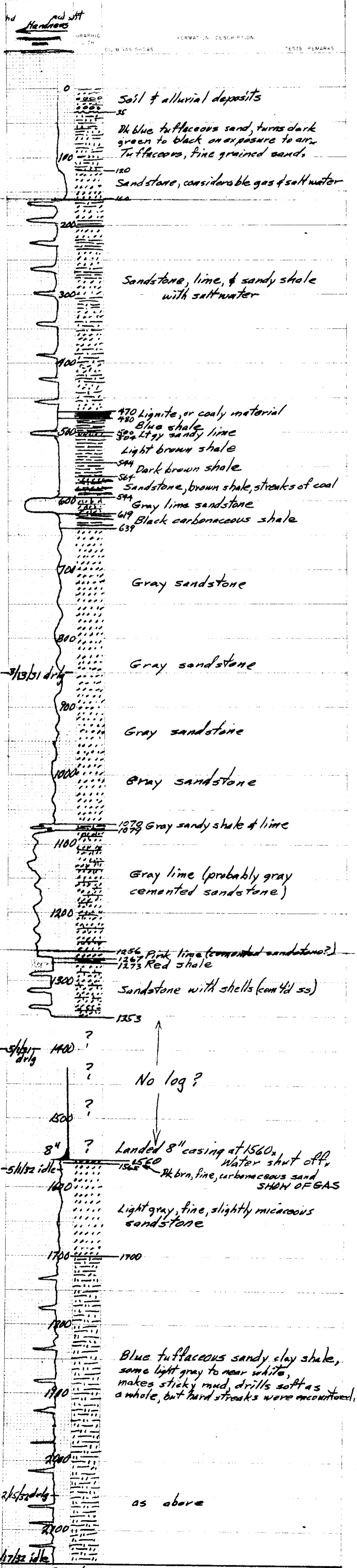
1931 ~~1932~~ 1934 ~~1935~~ ^{topo} 225' 2150'

file (driller's log) 10/18/62

References:

Weaver, C.E., 1945; AAPG-Bull, vol 29, no 10, p1383
 Vokes, et al., 1954; USGS-OM150, end of text.

SHOWS: Trace gas, No oil
 Located by a doodlebug on or near axis of
 a syncline?



2150' T.D.

WILLAMETTE PET. SYN.
 Corvallis-1
 Sec. 11-125-5W
 Benton County
 Abnd 1934