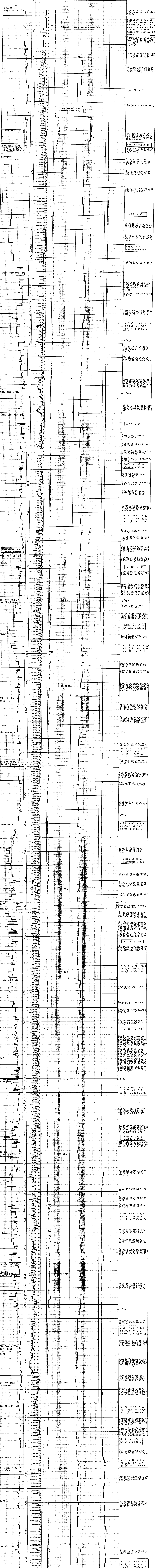


EXPLORATION LOGGING

A GEOLOGICAL ENGINEERING SERVICE

REMARKS DRILLING CONTRACTOR: HUNK CUTT & CAMP SPUD DATE: 8/3/75 TYPE MUDS: POLYZONE 400 CASING RECORD: 9 5/8" AT 5554' HOLE SIZE: 8 7/4" TO:		ABBREVIATIONS NO NEW BIT RBB RETURN BIT CB CORE BIT CP CHUCKER RETURN NR NO RETURNS LF LOGGED AFTER TRIP TG TRIP GAS CG CONNECTION GAS C CHANGE DST DRILL STEM TEST DST INTERVAL		COMPANY: REICHHOLD ENERGY CORP. WELL: N.N.G - CROWN ZELLEBACH NO. 1 FIELD: TILLAMOOK AREA LOCATION: SEC. 22 T2S-R10W-N8W COUNTY, STATE: TILLAMOOK, OREGON API WELL INDEX NO.: 35-057-0004 ELEVATION: 404' GRD., 418' KB DATE: FROM 8/3/75 TO 8/19/75 DEPTH: FROM 833 FT TO 5554 FT UNIT NO.: 20 LOGGING GEOLOGISTS: JOHN HINER, DON RODGERS	
--	--	--	--	---	--



TOTAL DEPTH 5554 FT