

COMPANY: *Oilfield Services*
 WELL: *W-101*
 COUNTY: *Wichita* STATE: *KS*
 LOCATION: *Wichita, KS*

Log Measured From: *11' 11" Above Perm. Datum*
 Drilling Measured From: *11' 11" Above Perm. Datum*
 Log Interval: *1' 11" - 1' 11"*
 Log Length: *1' 11"*

Run No. *1234*
 Service Order No. *1234*
 Fluid Level: *1234*
 Speed F.P.M.: *1234*
 Salinity ppm: *1234*

Depth-Logger (SFL) *1234*
 Depth-Logger (ILD) *1234*
 Depth-Logger (SBR) *1234*
 Depth-Logger (SFL) *1234*
 Depth-Logger (ILD) *1234*
 Depth-Logger (SBR) *1234*

SCALE CHANGES

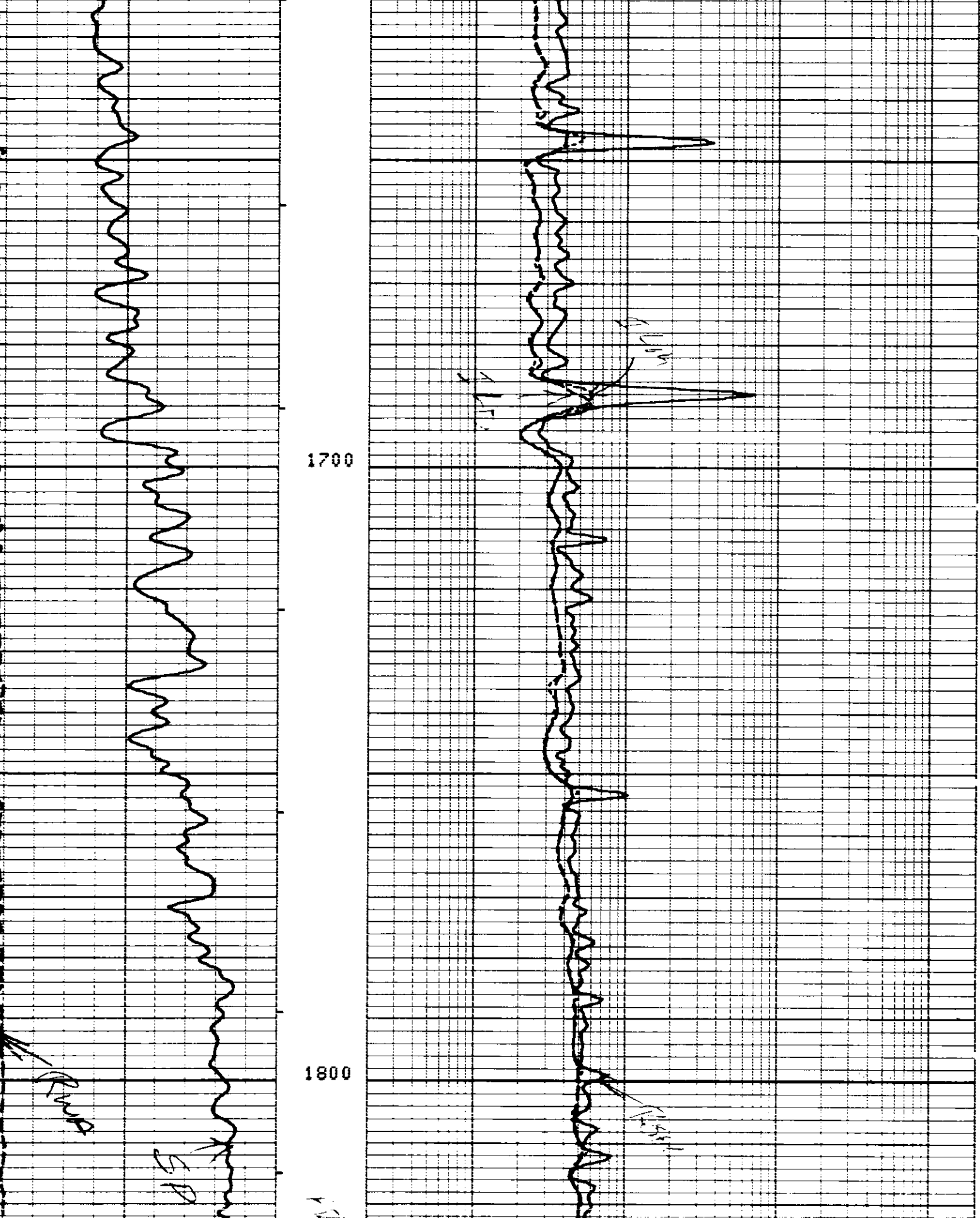
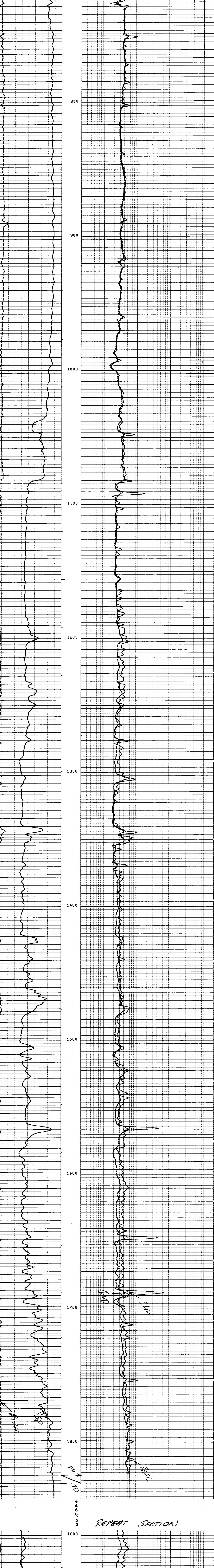
Type Log	DEPTH	Scale Up Hole	Scale Down Hole

REMARKS

CALIBRATION DATA
 ILD Sonde Error: *2.2*
 S.E. Set In Hole - Depth: *2.2*
 S.E. Corr. - Hole Size: *2.2*
 G.R. Background: *2.2*
 G.R. Source: *2.2*
 T.C. - Cal: *2.2*

LOGGING DATA
 ILD Sonde Error Log: *2.2*
 ILM Sonde Error Log: *2.2*
 G.R. Scale per 100 Div: *2.2*
 T.C. Log: *2.2*

All interpretations are opinions based on inferences from electrical or other measurements and we cannot, and do not guarantee the accuracy or correctness of any interpretation, and we shall not, except in the case of gross or willful negligence on our part, be liable or responsible for any loss, costs, damages or expense incurred or sustained by anyone resulting from any interpretation made by any of our officers, agents or employees. These interpretations are also subject to Clause 4 of our General Terms and Conditions as set out in our current Price Schedule.



AFTER SURVEY TOOL CHECK SUMMARY

DITD	ZERO		PLUS		UNITS
	BEFORE	AFTER	BEFORE	AFTER	
ILD	0.0	-0.0	499.8	497.9	MM/M
ILM	0.0	0.0	499.9	497.8	MM/M
SFL	0.0	0.4	499.9	499.0	MM/M

ILM SONDE ERROR CORRECTION: 2.0 MM/M
 ILD SONDE ERROR CORRECTION: 2.8 MM/M