

**DUAL INDUCTION
GUARD LOG**
WITH 2' LINEAR CORRELATION LOG

COMPANY REICHHOLD ENERGY CORPORATION
WELL CROWN ZELLERBACH 22-6
FIELD MIST NEHALEM BASIN
COUNTY COLUMBIA STATE OREGON

DATE NOV 18 1980
REDRILL NO 1
TO DRILLER T.D. LOGGED 2260
ELEV. G.L. 1424.6 K.B. 1435.1

LOG MEASURED FROM K.B. 08 10.5
F ABOVE PERM. BASEM. G.L. 1424.6
DEPTH-WELEX 2262
DEPTH-DRILLER 2262

PERMANENT SURM. 5.1
ELEV. 1424.6
FROM LOG MEAS. 10.5
FROM LOG MEAS. 2262

CHANGING-WELEX 440 @ 2
CHANGING-DRILLER 440 @ 2

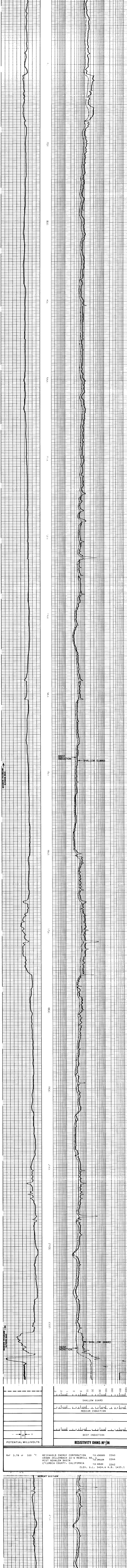
TYPE FLUID IN HOLE LITND
DENS. @ MEAS. TEMP. 1.07 @ 100°F
PH @ MEAS. TEMP. 7.78 @ 100°F
SOURCE R₁ @ MEAS. TEMP. 3.46 @ 100°F
SOURCE R₂ @ MEAS. TEMP. 2.56 @ 100°F

DATE 11/18/80
DEPTH-ORIG. 2262
DEPTH-DRILLER 2262

REICHHOLD ENERGY CORPORATION
CROWN ZELLERBACH 22-6
MIST NEHALEM BASIN
COLUMBIA COUNTY, CALIFORNIA

Service Ticket No. 055220 Remarks:		Type Log		Scale Changes		Scale Down Hole	
Change in Mud Type or Additional Samples							
Date	Sample No.						
Depth-Oriller							
Type Fluid in Hole							
Dens.	Visc.						
PH	Fluid Loss						
Source of Sample							
R ₁ @ Meas. Temp.							
R ₂ @ Meas. Temp.							
Source R ₁	R ₂						
R ₁ @ BHT	R ₂ @ BHT						
R ₁ @ Meas. Temp.	R ₂ @ Meas. Temp.						
R ₁ @ BHT	R ₂ @ BHT						
R ₁ @ Meas. Temp.	R ₂ @ Meas. Temp.						
R ₁ @ BHT	R ₂ @ BHT						

Welex does not guarantee the accuracy of any interpretation of log data, conversion of log data to physical rock parameters, or recommendations which may be given by Welex personnel or which may appear on the log or in any other form. Any user of such data, interpretations, conversions, or recommendations agrees that Welex is not responsible, except where due to gross negligence or willful misconduct, for any loss, damages, or expenses resulting from the use thereof.



Rmf 3.78 at 100 °F.
REICHHOLD ENERGY CORPORATION T.D. LOGGED 2260
CROWN ZELLERBACH 22-6 REDRILL NO 1
MIST NEHALEM BASIN T.D. DRILLER 2266
COLUMBIA COUNTY, CALIFORNIA ELEV. G.L. 1424.6 K.B. 1435.1