

COMPANY: REICHHOLD ENERGY  
 WELL: "ORION ZELEBACH" 824-28  
 FIELD: PITTSBURG  
 COUNTY: COLUMBIA  
 STATE: DECOU  
 SITE: 512374  
 LOCATION: 1233.28F, S88D17E  
 1231.5' FC CIR OF SECTION  
 SEC: 28 TWP: 5N RGE: 4E

OTHER SERVICES-  
 DIT  
 HIT

PROGRAM  
 ELEMENT: 608.7 F  
 LEG: 619.7 F  
 DRG: 608.7 F  
 DRG: 608.7 F

DEPTH-DRILLER: 5539.0 F  
 DEPTH-LOGGER: 5539.0 F  
 BTH, LOG INTERVAL: 5392.0 F  
 TD, LOG INTERVAL: 5393.0 F  
 CASING-DRILLER: 5393.0 F  
 CASING-LOGGER: 5393.0 F  
 BIT SIZE: 8 7/8"  
 BIT DEPTH: 5539 F

RECEIVED PILD  
 JUL 8 1985

TYPE FLUID IN HOLE: GEL/LIGNO  
 DENSITY: 10.1 LB/G  
 VISCOSITY: 52.0 S  
 PH: 9.0  
 FLUID LOSS: 7.2 CC  
 SOURCE OF SAMPLE: FLOWLINE  
 RNF: 2.390 DHMM AT 71.0 DEGF  
 RMC: 2.140 DHMM AT 55.0 DEGF  
 SOURCE RNF/RMC: 2.900 DHMM AT 55.0 DEGF  
 MEASURED/MEASURED  
 RNF AT BHT: 1.445 DHMM AT 122. DEGF  
 RMC AT BHT: 1.028 DHMM AT 122. DEGF  
 TIME CIRC. STOPPED: 00:30 5-6  
 TIME LOGGER ON BTH: 06:05 5-6  
 MAX. REC. TEMP: 122.0 DEGF  
 LOGGING UNIT NO: 8128  
 LOGGING UNIT LOC: SACRAMENTO  
 RECORDED BY: PILCH  
 WITNESSED BY: MCHILLIANS

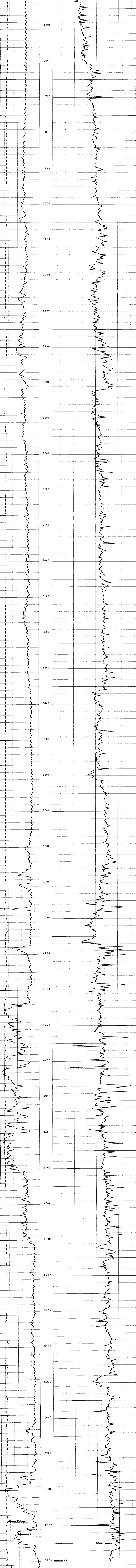
REMARKS:  
 DUAL AND SDNIC RUN IN COMBINATION.  
 900 PPM CHLORIDES  
 STANDOFFS AND CRE-2 USED FOR CENTRALIZATION.

EQUIPMENT NUMBERS-  
 DIS-EC 567 DIC-DA 552 MCD-DA 1237 SLS-RC 252  
 SLC-FA 1321 SLM-CA 188 IEM-BD 304

ALL INTERPRETATIONS ARE OPINIONS BASED ON INFERENCES FROM ELECTRICAL OR OTHER MEASUREMENTS AND WE CANNOT, AND DO NOT GUARANTEE THE ACCURACY OR CORRECTNESS OF ANY INTERPRETATION, AND WE SHALL NOT, EXCEPT IN THE CASE OF GROSS OR WILLFUL NEGLIGENCE ON OUR PART, BE LIABLE OR RESPONSIBLE FOR ANY LOSS, COSTS, DAMAGES OR EXPENSES INCURRED OR SUSTAINED BY ANYONE RESULTING FROM ANY INTERPRETATION MADE BY ANY OF OUR OFFICERS, AGENTS OR EMPLOYEES. THESE INTERPRETATIONS ARE ALSO SUBJECT TO OUR GENERAL TERMS AND CONDITIONS AS SET OUT IN OUR CURRENT PRICE SCHEDULE.

FILE 103 06-MAY-85 07:38  
 DATA ACQUIRED 06-MAY-85 07:17

CALIBIN... 6.0000 16.0000  
 SP (MV) > -100.0 0.0  
 DT (US/F) 150.00 50.000



FILE 102 06-MAY-85 07:24  
 DATA ACQUIRED 06-MAY-85 06:04

CALIBIN... 6.0000 16.0000  
 SP (MV) > -100.0 0.0  
 DT (US/F) 150.00 50.000

SENSOR MEASURE POINT TO TOOL ZERO

CBL 43.9 FEET	AMPL 43.9 FEET
TT3 40.1 FEET	TT4 39.1 FEET
TT1 42.9 FEET	TT2 43.9 FEET
CALI 31.8 FEET	SRAT 41.4 FEET
SFL 6.4 FEET	ILD 9.4 FEET
SP 2.5 FEET	ILM 5.7 FEET
TENS 2.2 FEET	SPAR 2.5 FEET
NDIS 35.6 FEET	

PARAMETERS

NAME	VALUE	UNIT	NAME	VALUE	UNIT
MSV1	HF1		DHS	16	
DSIN	S	US	ODEL	200	US
CDTS	100.000		DWCD	512	
DTF	189.000	US/F	DTH	56.0000	US/F
SRB	1000.000	DHMM	DSEC	6.60000	MHMO
PHI	SPH1		MSEC	7.20000	MHMO
BS	8.75000	IN	BMS	OPEN	
PP	NORM		DD	0.0	F