

REPORT
of
SUB-SURFACE
SURVEY

SEP 2 1980

REICHHOLD ENERGY CORP.
CROWN ZELLERBACH
42-1

SCANNED

JOB NO. B 2728

DATE 7-21-80

DIRECTIONAL DRILLING, INC.

BAKERSFIELD

Phone: 324-3574

DIRECTIONAL DRILLING, INC.

SHEET NO. 1 of 2

JOB NO. B2726

COMPANY REICHOLD ENERGY CORPORATION ADDRESS _____

WELL 42-1 CZ FIELD MIST COUNTY COLOMBIA STATE OREGON

MEASURED DEPTH	TERMINAL DRIFT ANGLE	TERMINAL DIRECTION OF DEVIATION	VERTICAL DEPTH	TOTAL COORDINATES				CLOSURE
				NORTH	SOUTH	EAST	WEST	
412	ASSUMED	VERTICAL TO THIS DEPTH						
509	6° 45'	N 78 E	508.83	1.19		5.59		
570	9°	N 73 E	569.26	3.28		13.68		
631	12° 15'	N 61 E	629.21	7.67		24.03		
692	13° 30'	N 57 E	603.63	14.68		35.68		
722	15°	N 57 E	717.75	18.70		41.87		
784	16°	N 55 E	777.50	27.96		55.61		
815	16° 45'	N 51 E	807.24	33.22		65.29		
876	19° 15'	N 46 E	865.26	45.71		76.71		
937	18°	N 37 E	923.06	60.30		89.62		
997	17° 45'	N 28 E	980.17	75.84		99.51		
1058	18°	N 20 E	1038.22	92.94		107.13		
1124	17° 15'	N 15 E	1101.12	112.00		113.14		
1209	16°	N 09 E	1182.57	135.79		118.19		
1269	15° 30'	N 12 E	1240.32	151.80		121.16		
1362	14° 30'	N 13 E	1330.15	175.30		126.37		
1454	13° 45'	N 13 E	1419.37	197.18		131.42		
1588	12° 45'	N 16 E	1549.80	226.91		139.11		
1679	12°	N 11 E	1638.68	245.87		143.66		
1732	12°	N 04 E	1690.53	256.80		145.10		
1833	11° 30'	N 06 W	1789.41	277.36		144.74		
1900	9° 45'	N 13 W	1855.26	289.55		142.70		
2022	6° 45'	N 25 W	1976.00	306.10		137.01		
2083	6° 15'	N 36 W	2036.61	312.05		133.50		
2144	4° 45'	N 48 W	2097.33	316.39		129.59		
2234	3° 30'	N 54 W	2187.09	320.47		124.56		
2327	4°	N 55 W	2279.89	324.00		119.61		
2455	3° 30'	N 53 W	2407.62	328.92		112.83		
2642	3° 45'	N 52 W	2594.25	336.12		103.45		
2822	3° 15'	N 77 W	2773.91	340.85		93.53		

SCANNED

DIRECTIONAL DRILLING, INC.

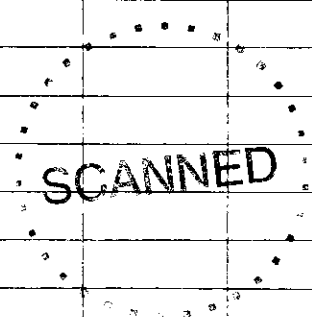
SHEET NO. 2 of 2

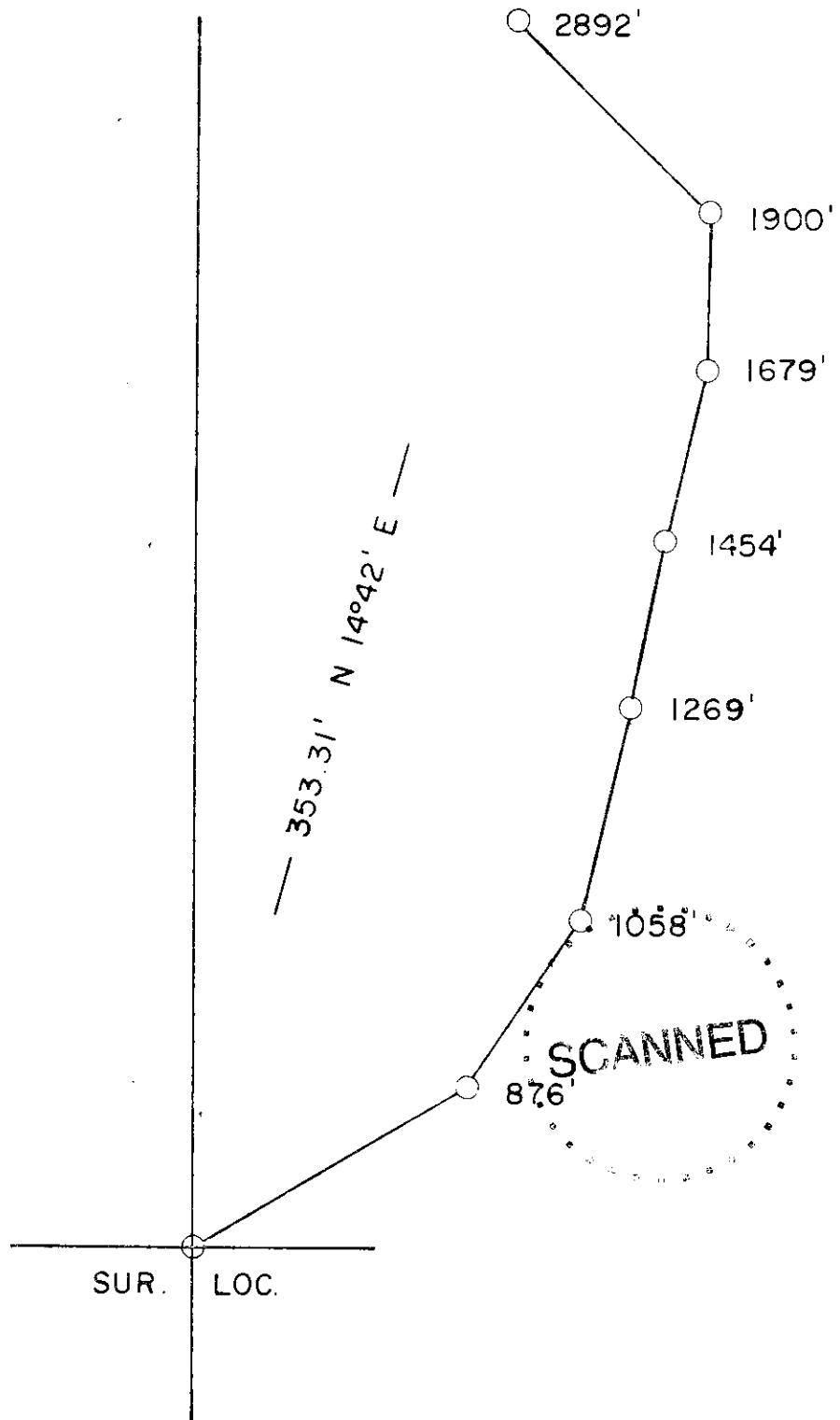
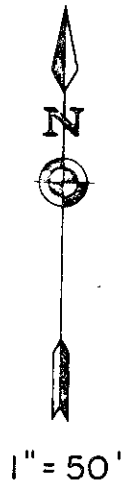
JOB NO 02728

COMPANY REICHOLD ENERGY CORPORATION ADDRESS

WELL 42-1 CZ FIELD MIST COUNTY COLOMBIA STATE OREGON

MEASURED DEPTH	TERMINAL DRIFT ANGLE	TERMINAL DIRECTION OF DEVIATION	VERTICAL DEPTH	TOTAL COORDINATES				CLOSURE
				NORTH	SOUTH	EAST	WEST	
2892	3° 15'	N 77° W	2843.00	341.74		89.67		
CLOSURE: 353.31'				N 14° 42' E				
ALL METHODS OF CALCULATIONS ARE AVERAGE ANGLE								





M. D.	2892'
V. D.	2843.80'
NORTH	341.74'
EAST	89.67'