

WILDCAT COQUILLE AREA  
15-28S-13W  
FAT ELK NO. 1  
NORTHWEST EXPLORATION COMPANY  
NORTHWEST EXPLORATION COMPANY  
WELL FAT ELK NO. 1  
FIELD WILDCAT COQUILLE AREA  
COUNTY COOS STATE OREGON  
LOC 15-28S-13W-13W  
Elev. 688 Elev. 700  
Log Measured From 8.8  
Drilling Measured From 8.8  
Date 7/6/80  
Rt. No. ONE  
RECEIVED-PLD

Depth-Driller 3117  
Depth-Company 2287  
Depth-Log 650

Counting Logger 9.5 @ 6.52  
Probe in Hole 8.50  
Dens. 10.8  
Dens. Fluid 10.2  
Dens. Source 5153  
Dens. Calibrator 1177  
Neut. Panel 418  
Neut. Cart. 409  
Neut. Source 594  
Neut. Calibrator 1274  
GR Cart. CSU  
Memorizer Panel CSU  
Tape Recorder (TR) CSU  
Depth Encoder (DR) CSU  
Pressure Wheel (CPW)  
Centralizers: Enter Spring, Type MCDB  
Standoffs, No. 1  
Slide, or None S, O, Inches 13"

Run No. ONE  
Service Order No. 123888  
Fluid Level FULL  
Salinity, PPM CL  
Speed, F.P.M.

EQUIPMENT DATA  
Dens. Panel 418  
Dens. Cart. 392  
Dens. Skid 206  
Dens. Source 5153  
Dens. Calibrator 1177  
Neut. Panel 418  
Neut. Cart. 409  
Neut. Source 594  
Neut. Calibrator 1274  
GR Cart. CSU  
Memorizer Panel CSU  
Tape Recorder (TR) CSU  
Depth Encoder (DR) CSU  
Pressure Wheel (CPW)  
Centralizers: Enter Spring, Type MCDB  
Standoffs, No. 1  
Slide, or None S, O, Inches 13"

CALIBRATION DATA  
BKG. CPS  
GR Source CPS SEE TAILS  
Sens. Cal T. C. Cal  
Short Spacing - Before Log  
Long Spacing - Before Log  
Short Spacing - After Log  
Long Spacing - After Log  
Pr - Before Log  
Pr - After Log  
Pr - Before Log  
Pr - After Log

LOGGING DATA  
DEPTH Top Bottom Porosity Scale Matrix Auto Corr. or Hole Size Setting Porosity Scale Grain Density Liquid Density Hole Fluid Sns. Logged T. C. Zero Div. Scale Per 100 Div.  
CAL 0-60 SAND CAL 0-60 2.68 1.0 WATER CSU CSU 0 150

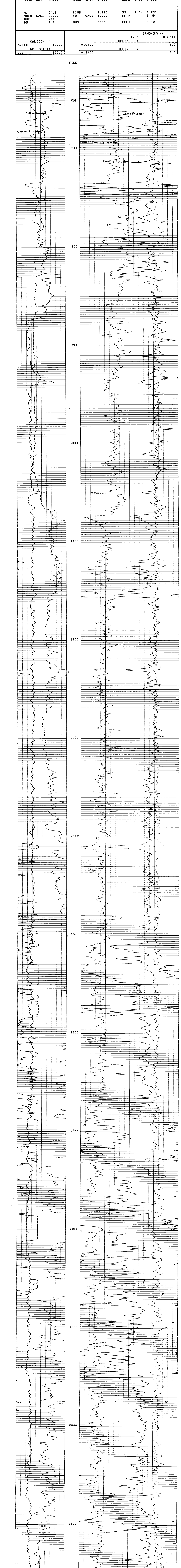
Remarks: FISH AT 2337

All interpretations are opinions based on inferences from electrical or other measurements and we cannot, and do not guarantee the accuracy or correctness of any interpretation, and we shall not be liable or responsible for any loss, cost, damages or expenses incurred or sustained by anyone resulting from any interpretation made by any of our officers, agents or employees. These interpretations are also subject to Clause 4 of our General Terms and Conditions as set out in our current Price Schedule.

NAME	UNIT	VALUE	NAME	UNIT	VALUE	NAME	UNIT	VALUE
HC			PSNR		2.260	BS	INCH	8.750
MDEN	G/C3	2.680	FD	G/C3	1.000	MATR	SAND	
BHF			BHS	OPEN		FPHI	PHIX	
DD		0.0						

CALI(IN)	6.000	16.00	DRHQ(G/C3)	-0.250	0.2500
GR (GAPI)	0.0	150.0	NPHI( )		0.0
			DPHI( )		0.0

FILE 1



FILE 1

CALI(IN)	6.000	16.00	DRHQ(G/C3)	-0.250	0.2500
GR (GAPI)	0.0	150.0	NPHI( )		0.0
			DPHI( )		0.0

NAME	UNIT	VALUE	NAME	UNIT	VALUE	NAME	UNIT	VALUE
HC			PSNR		2.260	BS	INCH	8.750
MDEN	G/C3	2.680	FD	G/C3	1.000	MATR	SAND	
BHF			BHS	OPEN		FPHI	PHIX	
DD		0.0						

REPEAT SECTION

NAME	UNIT	VALUE	NAME	UNIT	VALUE	NAME	UNIT	VALUE
HC			PSNR		2.260	BS	INCH	8.750
MDEN	G/C3	2.680	FD	G/C3	1.000	MATR	SAND	
BHF			BHS	OPEN		FPHI	PHIX	
DD		0.0						

CALI(IN)	6.000	16.00	DRHQ(G/C3)	-0.250	0.2500
GR (GAPI)	0.0	150.0	NPHI( )		0.0
			DPHI( )		0.0

FILE 2