



**COMPENSATED
ACOUSTIC VELOCITY
LOG**

COMPANY: REICHOLD ENERGY CORPORATION
 WELL: HAMMERBERG NO. 1
 FIELD: NEHALEM BASIN
 COUNTY: COLUMBIA STATE: OREGON
 LOCATION: 209' NORTH & 412' WEST OF THE EAST 1/4 CORNER OF SECTION
 SHEET: 14 Twp. 6N Rge. 5W
 PERMITSUM DATION: G. L. Elev. 553.6 Elev. KB 564.1
 LOG MEASURED FROM: K. B. Elev. 10.5 Ft. Above Perm Datum
 DATE: 9-13-79
 FROM: 0851
 TO: 2851
 BHM LOG NUMBER: 2845
 CASING-DIETER: 400 @ 7' @ 398
 BHSIZE: 6 1/4
 TYPE FLUID IN HOLE: LIQUID SULF
 DENS. VISC: 76.1 4.3
 pH: 9.0 17.0 ml
 SOURCE OF SAMPLE: P.1
 R₁₀ @ MEAS. TEMP: 2.42 @ 90 °F
 R₁₀₀ @ MEAS. TEMP: 3.34 @ 68 °F
 R₁₀₀₀ @ MEAS. TEMP: 3.32 @ 54 °F
 SOURCE OF MEAS. TEMP: MEASURED
 T₁₀ @ 1.92 @ 113 °F
 T₁₀₀ @ 1.86 @ 113 °F
 T₁₀₀₀ @ 1.70 @ 113 °F
 EQUID. I. LOCATION: 1.3 FE @ 3110' KENNEDY
 RECORDED BY: BRUF, CLAR

Service Ticket No. 048896 Remarks:

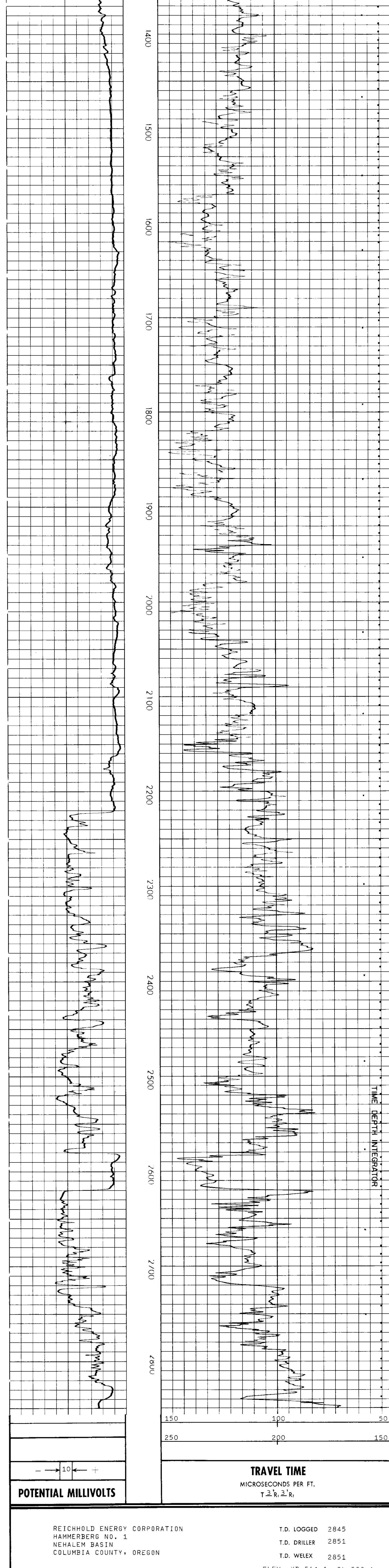
Date	Sample No.	Type Log	Depth	Scale Changes	Scale Up Hole	Scale Down Hole

Dens.	Visc.	mi	mi	mi	mi

R ₁₀ @ Meas. Temp.	R ₁₀₀ @ Meas. Temp.	R ₁₀₀₀ @ Meas. Temp.	Source: R ₁₀	R ₁₀₀	R ₁₀₀₀

R ₁₀ @ BHT	R ₁₀₀ @ BHT	R ₁₀₀₀ @ BHT
1.92 @ 113 °F	1.86 @ 113 °F	1.70 @ 113 °F

Welex does not guarantee the accuracy of any interpretation of log data, conversion of log data to physical rock parameters or recommendations which may be given by Welex personnel or which may appear on the log or in any other form. Any user of such data, interpretations, conversions or recommendations agrees that Welex is not responsible except to the extent of gross negligence or willful misconduct for any loss, damages or expenses resulting from the use thereof.



REICHOLD ENERGY CORPORATION
 HAMMERBERG NO. 1
 NEHALEM BASIN
 COLUMBIA COUNTY, OREGON

T.D. LOGGED 2845
 T.D. DRILLER 2851
 T.D. WELEX 2851
 ELEV: KB 564.1 6L 553.6

