



**DUAL INDUCTION  
GUARD LOG**  
WITH 2" LINEAR CORRELATION LOG

COMPANY: AMERICAN OILFIELD PRODUCTION CO.  
WELL: HICKORY # 9-12  
FIELD: LEBANON APL # 36-048-05013  
COUNTY: LINN STATE OREGON  
LOCATION: 1980 S 6 7/8' E OF THE CORNERS  
N. 1/2 CORNER 2' 1' OIP

WELL: G.L. 103  
FIELD: Sec. 9 Twp. 12 S. Rng. 24 W.  
COUNTY: DEWAS  
STATE: OREGON  
Elev. K.B. 3001  
Elev. K.F. 3094

Permanent Datum: 4.0  
Log Measured From: 4.0  
Datum Measured From: 7.00  
Depth - Collar: 1.64  
Depth - Wellhead: 8.14  
Elev. - Wellhead: 2159  
Elev. - Collar: 2157  
Elev. - Datum: 2151

Blk Size: 5' x 4'  
Type Fluid in Hole: LIQUID SURF.  
Depth: 90  
Dens. @ Meas. Temp.: 2.55 @ 48  
R. @ Meas. Temp.: 3.43 @ 48  
Source: R. 1/17 @ 110 F  
R. @ BHT: 1.70 @ 216 F  
R. BHT: 1.68 @ 110 F

Change in Mud Type or Additional Samples: \_\_\_\_\_  
Date: \_\_\_\_\_  
Depth - Driller: \_\_\_\_\_  
Type Fluid in Hole: \_\_\_\_\_  
Dens. Visc. \_\_\_\_\_  
pH Fluid Loss \_\_\_\_\_  
Source of Sample \_\_\_\_\_  
R. @ Meas. Temp. \_\_\_\_\_  
R. @ Meas. Temp. \_\_\_\_\_  
Source: R. \_\_\_\_\_  
R. @ BHT \_\_\_\_\_  
R. BHT \_\_\_\_\_

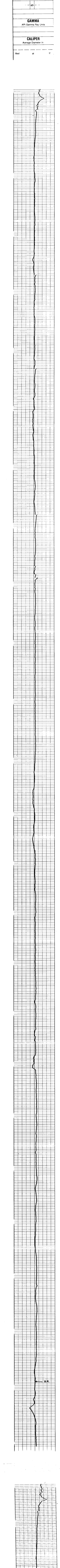
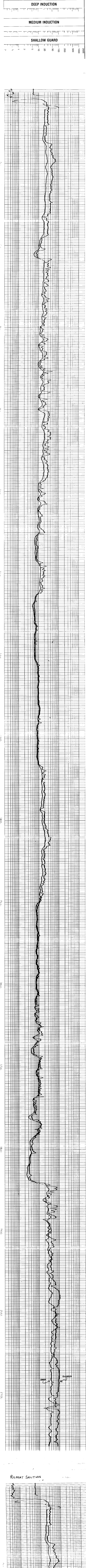
Service Ticket No. \_\_\_\_\_  
Remarks: \_\_\_\_\_

SCALE CHANGES  
Type Log \_\_\_\_\_  
Depth \_\_\_\_\_  
Scale Up Hole \_\_\_\_\_  
Scale Down Hole \_\_\_\_\_

EQUIPMENT DATA  
Run No. \_\_\_\_\_  
Tool Type and No. \_\_\_\_\_  
Pad Type \_\_\_\_\_  
Tool Position \_\_\_\_\_  
Other \_\_\_\_\_

WELLS does not guarantee the accuracy of any interpretation of log data, conversion of log data to physical rock parameters, or recommendations which may be given by Wells personnel or which may appear on the log, if any come from the user of such data, interpretations, conversions, or recommendations, except where due to gross negligence or willful misconduct, or any loss, damage, or expense resulting from the use thereof.

Prepared by: M.E. MANNO  
Checked by: \_\_\_\_\_  
Approved by: \_\_\_\_\_



REPEAT SECTION

