

FILE NO. _____
 B.L.C. 763.8
 3-893-02267

COMPANY: OREGON NATURAL GAS DEVELOPMENT CORP.
 WELL: I.W. 13-11
 FIELD: MIST
 COUNTY: COLUMBIA
 STATE: OREGON

LOCATION: 2772.25 NORTH & 344.20 WEST
 from the West 1/4 corner of:
 SEC. 11 T.19N. R.02E S.34N.
 Other Services: DITL-B/C/RC
 DITL-CN-OR

Operator: Dale
 Location: _____
 Date: _____
 Run No.: _____
 Service: _____
 Depth: _____
 Cable: _____
 Log: _____
 Type: _____

Run No.	1	2	3	4	5	6	7	8	9	10	11	12	13	14	15	16	17	18
Depth	1	2	3	4	5	6	7	8	9	10	11	12	13	14	15	16	17	18
Service	1	2	3	4	5	6	7	8	9	10	11	12	13	14	15	16	17	18
Depth	1	2	3	4	5	6	7	8	9	10	11	12	13	14	15	16	17	18
Cable	1	2	3	4	5	6	7	8	9	10	11	12	13	14	15	16	17	18
Log	1	2	3	4	5	6	7	8	9	10	11	12	13	14	15	16	17	18
Type	1	2	3	4	5	6	7	8	9	10	11	12	13	14	15	16	17	18

FIELD TEST
 In making interpretations of logs our employees will give customer the benefit of their best judgment, but since all interpretations are opinions based on inferences from electrical or other measurements, we cannot, and we do not guarantee the accuracy or the correctness of any interpretation. We shall not be liable or responsible for any loss, cost, damage, or expense whatsoever incurred or sustained by the customer resulting from any interpretation made by any of our employees.

Remarks: SL=48 inches 1780-2900
 2 ft STEP, 8 ft WINDOW

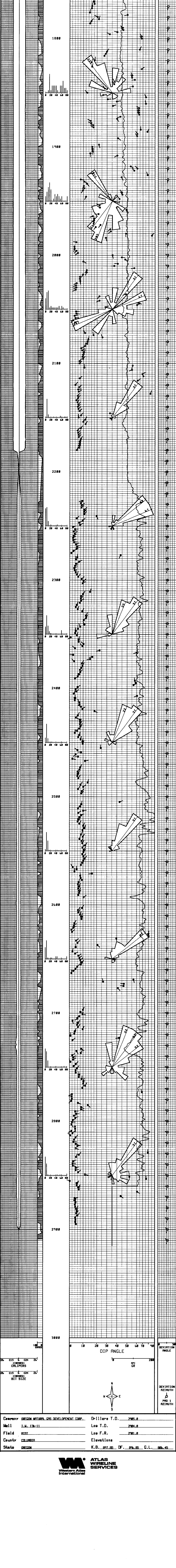
EQUIPMENT DATA

Test Series No.	7637	7637		
Test Serial No.	1810	1810		
Orientation Type				
OR Serial No.				
Panel Series No.				
Panel Serial No.				
Electronics No.	76387	76387		
Tape Unit Series No.				
Tape Unit Serial No.				
Analyst	JOHNSON	JOHNSON		

MAGNETIC DECLINATION: 20 EAST
VERTICAL DISPLACEMENT FOR VARIOUS HORIZONTAL DISTANCES AND ANGLES OF DIP

DIP In degrees	100	1000	5280	DIP In degrees	100	1000	5280
1	1.75	17.5	92.2	19	34.4	344	1818
2	3.50	35.0	184.0	20	36.4	364	1922
3	5.25	52.5	276.0	21	38.4	384	2022
4	7.00	70.0	368.0	22	40.4	404	2133
5	8.75	87.5	460.0	23	42.5	425	2241
6	10.50	105.0	552.0	24	44.5	445	2351
7	12.25	122.5	644.0	25	46.5	466	2462
8	14.00	140.0	736.0	30	51.7	517	3048
9	15.75	157.5	828.0	35	57.0	570	3647
10	17.50	175.0	920.0	40	63.1	631	4493
11	19.25	192.5	1012.0	45	70.0	700	5280
12	21.00	210.0	1104.0	50	78.2	782	6291
13	22.75	227.5	1196.0	55	87.8	878	7500
14	24.50	245.0	1288.0	60	99.2	992	8945
15	26.25	262.5	1380.0	65	112.4	1124	10647
16	28.00	280.0	1472.0	70	127.2	1272	12607
17	29.75	297.5	1564.0	75	143.8	1438	14850
18	31.50	315.0	1656.0	80	162.1	1621	17405

GRAPHIC PRESENTATION



Company: OREGON NATURAL GAS DEVELOPMENT CORP. Drillers T.D. 2985.0
 Well: I.W. 13-11 Log T.D. 2984.0
 Field: MIST Log F.R. 2981.0
 County: COLUMBIA Elevations
 State: OREGON K.B. 897.65 DF. 896.65 C.L. 886.45