

True Vertical Depth AIT-BHC

2 inch Display

A Mark of Schlumberger

Using the following logs:

COMPANY: NORTHWEST NATURAL GAS
WELL: I.W. 24C-23-65
FIELD: CALVIN CREEK GAS STORAGE
COUNTY: COLUMBIA
STATE: OREGON
DATE LOGGED: 28-APR-2000 Date Processed: 18-MAY-2000
WELL LOCATION: 985.3' N & 1258.4' E from the SW corner of 23 FROM THE SW CORNER OF 23
Elevations: KB: 922.5ft DF: 922.3ft GL: 905ft
API Number: 36-009-00350 Job Number:

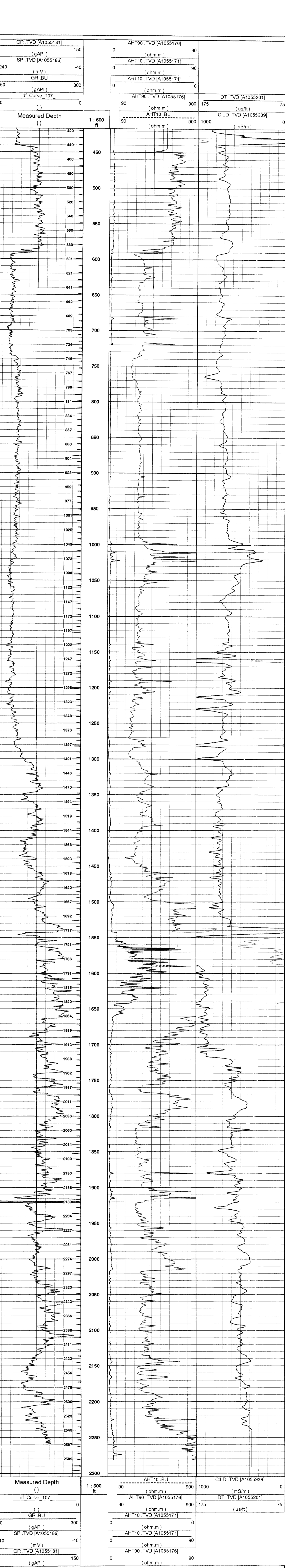
FOLD HERE The well name, location and borehole reference data were furnished by the customer.

All interpretations are based on references from electrical or other measurements and we cannot and do not guarantee the accuracy or correctness of any interpretation and we shall not be held liable in the case of gross carelessness or negligence on our part. We are not responsible for any loss of data or expenses incurred or sustained by anyone relying on any interpretation made by any of our officers, agents or employees. These interpretations are also subject to Clause 4 of our General Terms and Conditions as set out in our current Price Schedule.

Field Recording: Location: Sacramento Software Version: Engineer: M. Khan
Office Recording: ICS Center: Bakersfield ICS BaseLine: Log Analyst: T. Quinlan

Mud and Borehole Measurements:
Rm @ Measured Temperature: @ BHT: 92degF BitSize: 7.875in
Rmf @ Measured Temperature: @ Type Fluid in Hole:
Rmc @ Measured Temperature: @ Mud Density: 8.8lbm/gal

Remarks:

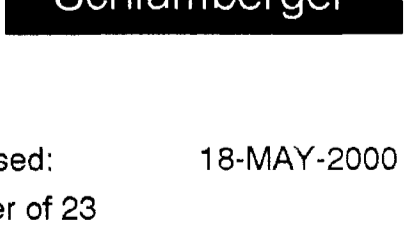


Measured Depth (ft) 1:600 ft
df.Curve.107
GR.BU (gAPI)
SP.TVD [A1055186] (mV)
GR.TVD [A1055181] (gAPI)

AHT10.BU (ohm.m)
AHT90.TVD [A1055176] (ohm.m)
AHT10.TVD [A1055171] (ohm.m)
AHT10.TVD [A1055171] (ohm.m)
AHT90.TVD [A1055176] (ohm.m)

CILD.TVD [A1055339] (mS/m)
DT.TVD [A1055201] (us/ft)

Company: NORTHWEST NATURAL GAS
Well: I.W. 24C-23-65
FIELD: CALVIN CREEK GAS STORAGE
COUNTY: COLUMBIA
STATE: OREGON



Date Logged: 28-APR-2000 Date Processed: 18-MAY-2000

Well Location: 985.3' N & 1258.4' E from the SW corner of 23 FROM THE SW CORNER OF 23

Elevations: KB: 922.5ft DF: 922.3ft GL: 905ft

API Number: 36-009-00350 Job Number: