

COUNTY: OKLAHOMA FIELD: WILDCAT WELL: IRA BAKER NO. 1 COMPANY: MOBIL OIL CORP.	COMPANY: MOBIL OIL CORPORATION WELL: IRA BAKER NO. 1 FIELD: WILDCAT COUNTY: LINCOLN STATE: OKLAHOMA	Location: 1087' SOUTH & 2537' WEST FROM NORTHEAST CORNER Sec. 28 Twp. 15S Rge. 3W KB Elev. 340 Log Measured from: KB Drilling Measured from: KB Elev. K.B. 340 Elev. D.F. 340 Elev. G.I. 340
Run No.: 1 Date: 1-22-79 Depth (log): 0-5 Depth (log): 0-5	Run Log Interval: 2000 Run Log Interval: 2000 Run Log Interval: 2000 Run Log Interval: 2000	Run Log Interval: 2000 Run Log Interval: 2000 Run Log Interval: 2000 Run Log Interval: 2000

FOLD HERE The well name, location and borehole reference data were furnished by the customer.

CHANGES IN MUD TYPE OR ADDITIONAL SAMPLES		SCALE CHANGES			
Date	Sample No.	Type Log	Depth	Scale Up Hole	Scale Down Hole

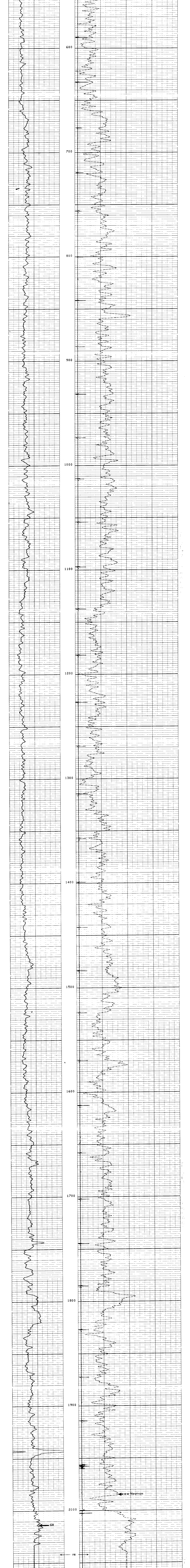
Type Fluid: _____ Source of Sample: _____ R <sub>m</sub> @ Meas. Temp: _____ R <sub>mc</sub> @ Meas. Temp: _____ R <sub>m</sub> @ BHT: _____ dens. Fluid: _____ dens. Water by Vol: _____ Oil by Vol: _____ Solids by Vol: _____ Solids Av. Sp. Gr: _____	LOGGING DATA Matrix: _____ Auto Hole Size Corr: _____ Hole Size Setting (if not auto): _____ Porosity Scale: _____ From: _____ To: _____
--	---

EQUIPMENT DATA Run No.: 016 Panel No.: 1 Cart No.: 1 Source No.: 1 Calibrator: S-7-1 GR Cart: _____ Caliper: _____ TTR: _____ Mem Panel No.: CSU	REMARKS Service Order No.: 82989 API Serial No.: _____
---	--

BIT SIZE / CASING DATA	
Bit	From To Ksg Size Csg. Wt. From To

CALIBRATION DATA		CNL - Before Log - ACPS		CNL - After Log - ACPS	
Run No.	API Scale	Background CPS	Total CPS	Long Spacing	Short Spacing
1					
2					
3					
4					

All interpretations are opinions based on inferences from electrical or other measurements and we cannot, and do not guarantee the accuracy or correctness of any interpretations, and we shall not, except in the case of gross or willful negligence on our part, be liable or responsible for any loss, claims, damages or expenses incurred or sustained by anyone resulting from any interpretation made by any of our employees, agents or representatives.



COMPANY: MOBIL OIL CORPORATION WELL: IRA BAKER NO. 1 FIELD: WILDCAT COUNTY: LINCOLN STATE: OKLAHOMA	SCHL. FR: 2000 SCHL. TD: _____ DF: 2 TD: _____ Elev.: _____ KB: 363 DF: 363 GI: 340
--	---