



DHPL INDUCTION COMPENSATED SONIC 2-100

COMPANY ENERFIN RESOURCES Z
 WELL JH #31-20-54
 FIELD MIST
 COUNTY COLUMBIA STATE OR
 LOCATION 1556 23 FEET WEST AND 730 30 FEET SOUTH FROM THE NORTHERN CORNER OF:
 SECTION 20 T1P S11 R0E 4H
 PERMANENT DATUM G.L. ELEV 624.8
 LOG MEASURED FROM K.B. 10.0 FT ABOVE PERM DATUM
 DRILLING MEASURED FROM KELLY BUSHING 09/28/95
 DATE 09/28/95
 DEPTH-DRILLER 2436
 DEPTH-LOGGED 2436
 TOP LOG INTER 7000-95
 CASING DRILLER 7000-95
 CASING LOGGER 495
 BIT SIZE 6.50
 TYPE FLUID IN HOLE DRIS/PAVEY
 DENS. FT. / SEC. 10.3
 SOURCE OF SAMPLE 6 RIG/80
 RMC # MEAS. TEMP. 0.9 @ 73
 RMC # MEAS. TEMP. 0.8 @ 73
 RMC # MEAS. TEMP. 1.2 @ 73
 SOURCE RMC:RMC :
 RM BHRT :
 TIME SINCE LOG. 1800 09/28
 TIME ON BOTTOM 2155 09/28
 END OF LOG SECTION :
 RECORDED BY :
 WITNESSED BY :
 D. JONES

SERVICE TICKET NO.: 997079 API SERIAL NO.: 36-009-20331 RESISTIVITY SCALE CHANGES
 CHANGE IN MUD TYPE OR ADDITIONAL SAMPLES / / / TYPE LOG DEPTH SCALE UP HOLE SCALE DOWN HOLE
 DATE SAMPLE NO. 05/28/96:ONE / / / ONE DSPT #108932 N.A. 1.5' SC
 TYPE FLUID SAME ABOVE
 DENS. IN VISC
 PH FLUID LOSS
 SOURCE OF SAMPLE
 RMC # MEAS. TEMP @ @
 RMC # MEAS. TEMP @ @
 RMC # MEAS. TEMP @ @
 SOURCE, RMC:RMC CALC. CALC.
 RM # BHT 0.7 @ 100
 RMC # BHT 0.6 @ 100
 RMC # BHT 0.5 @ 100

EQUIPMENT DATA

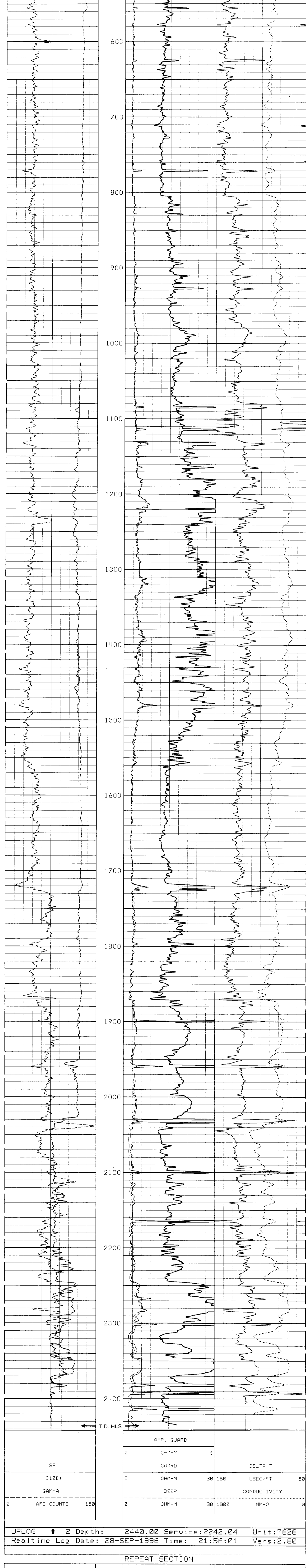
GAMMA		ACOUSTIC		DENSITY		NEUTRON	
RUN NO.	ONE	RUN NO.	ONE	RUN NO.		RUN NO.	
SERIAL NO.	1085B1	SERIAL NO.	FDBA013	SERIAL NO.		SERIAL NO.	
MODEL NO.	NGRT	MODEL NO.	LSS	MODEL NO.		MODEL NO.	
DIAMETER	3.625	NO. OF CENT.	THREE	DIAMETER		DIAMETER	
DETECTOR MODEL NO.	N.A.	SPACING	10 FEET	LOG TYPE		LOG TYPE	
TYPE	SCINT.	LENGTH	4.000	SOURCE TYPE		SOURCE TYPE	
DISTANCE TO SOURCE	N.A.	LSA [Y,N]	YES	SERIAL NO.		SERIAL NO.	
		FUDA [Y,N]	NO	STRENGTH		STRENGTH	

LOGGING DATA

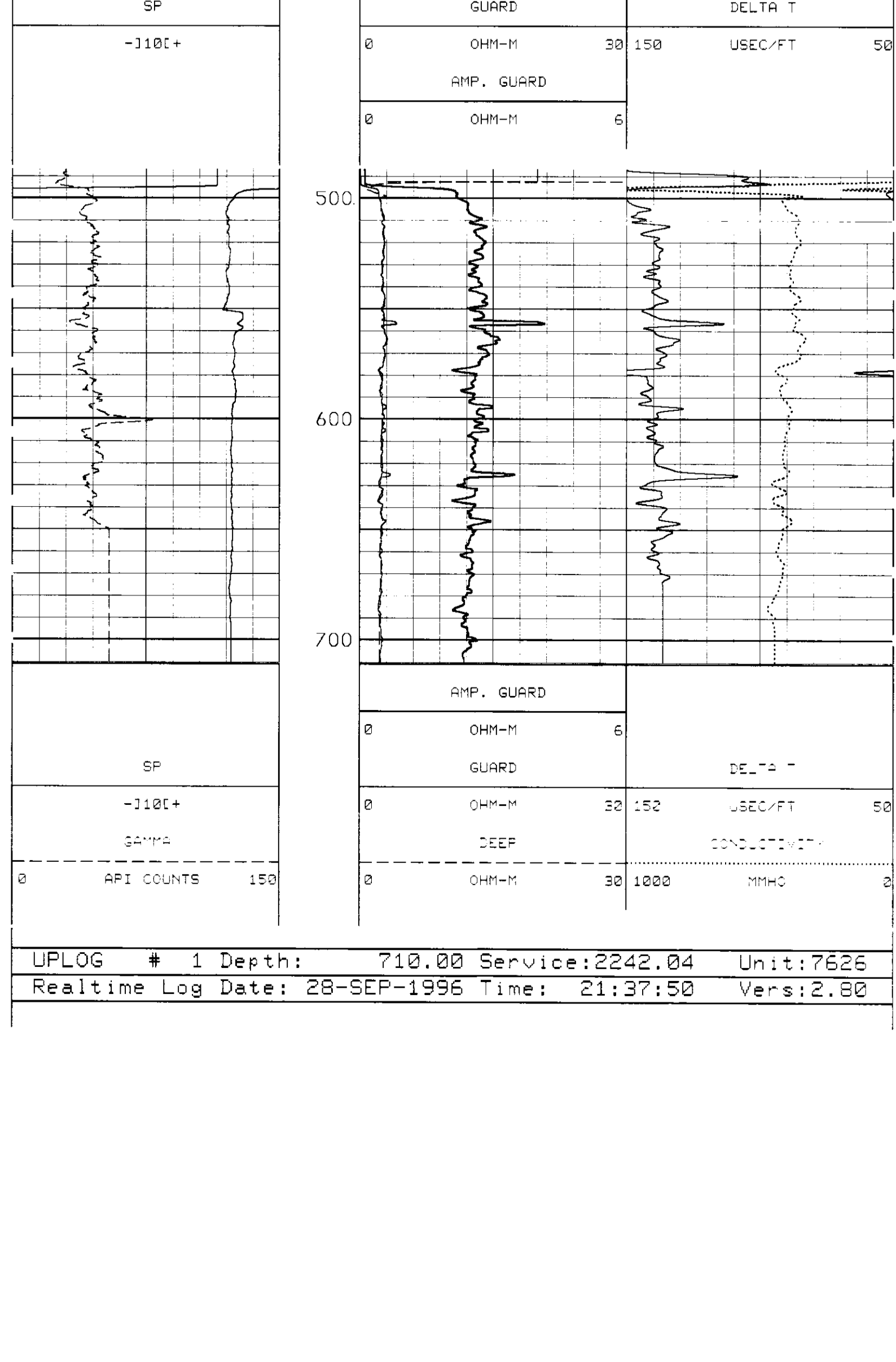
RUN NO	GENERAL		GAMMA		ACOUSTIC		DENSITY		NEUTRON	
	DEPTH	SPEED	L	R	L	R	L	R	L	R
ONE	2436	495	30	150	150	50	57			
			GAPI	GAPI	USFT	USFT	US/FT			

REMARKS: ANNULAR HOLE VOLUME CALCULATED USING 3.5" CASING.
 CREW ON LOCATION: M.EMERSON, M.BOLLINGER RIG: TAYLOR #4
 FOR USING HALLIBURTON.

REGISTRATION STATE NOT CALIBRATED THE ORIGINAL LOG DATA INTERPRETATION OF THE LOG DATA. CORRECTION OF LOG DATA TO AN ACCURATE PARAMETER OF
 REGISTRATION STATE HAS NOT BEEN MADE BY HALLIBURTON PERSONNEL OR UNDER SUPERVISION OF THE LOG DATA INTERPRETER. THE USER OF THIS DATA, THEREFORE,
 ASSUMES ALL RESPONSIBILITY AND LIABILITY FOR ANY ERRORS OR OMISSIONS. HALLIBURTON IS NOT RESPONSIBLE FOR ANY ERRORS OR OMISSIONS. HALLIBURTON
 WILL NOT BE RESPONSIBLE FOR ANY ERRORS OR OMISSIONS.



UPLOG # 2 Depth: 2440.00 Service:2242.04 Unit:7626
 Realtime Log Date: 28-SEP-1996 Time: 21:56:01 Vers:2.80



UPLOG # 1 Depth: 710.00 Service:2242.04 Unit:7626
 Realtime Log Date: 28-SEP-1996 Time: 21:37:50 Vers:2.80