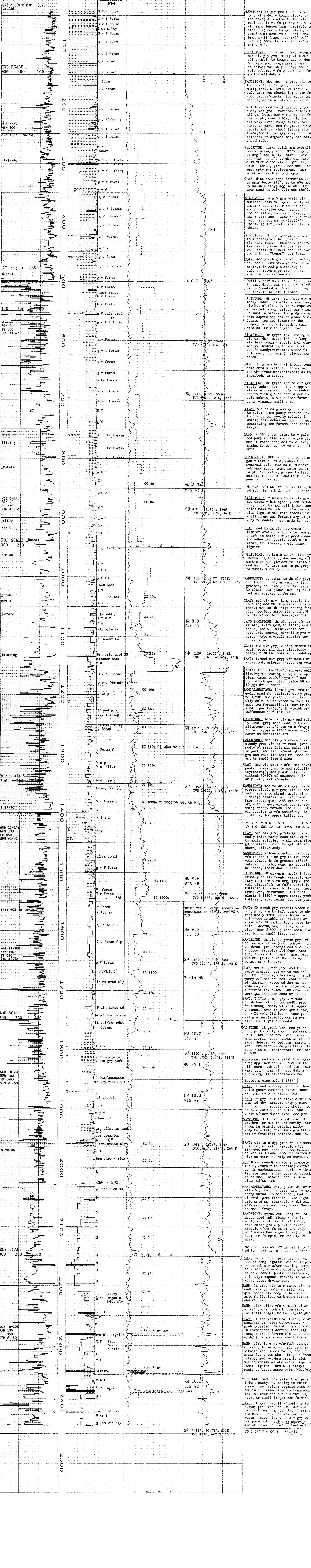


HORIZON

MELL
LOGGING

COMPANY: ENERFIN RESOURCES NORTHWEST
WELL: J.H. #31-20-54
LOCATION: 1956.3' W & 74.9' S from the NE corner of Section 20, T5N, R4W, W8M
ELEVATION: G.L. 624.8' ± K.B. 631.8'
FIELD: MIST
COUNTY: Columbia, Oregon
API NUMBER: 36-009-06321
SPUD DATE: September 23, 1996
LOGGING DATES: 9-23-96 to 9-28-96
LOGGING DEPTHS: 40' to 2437'
GEOLOGIST: Dave Huggins
COMPANY MAN: Rob Lucas, Production Specialties
CONTRACTOR: Taylor Drilling Inc.
RIG: 7
LOGGING GEOLOGISTS: Jim Eastes, John Stach
BIT SIZE: 4.875" to 4.93" K.B.
5.25" to T.D.
CASING: 7" (20' ft) set @ 495'

ABBREVIATIONS	SYMBOLS
CO Circulate Out	PEBBLES >2mm
LAT Logged After Trip	SAND
LAS Logged After Survey	SANDSTONE
CG Connection Gas	SILTSTONE
KC Kelly Cut Gas	MUDSTONE
MG Naper Gas	SHALE
TG Trip Gas	MARL
SG Survey Gas	CLAY
WR Naper Run	CHERT
COPE INTERVAL	DOLOSTONE
MOB (100,000# full scale)	LIMESTONE
TRIP	VOLCANICS
	TUFF
	BASALT



NOTE: letters in mineral column refer to specific minerals, i.e. m = mica; small case denotes occasional presence, capital letter denotes commonly present and capital letter underlined denotes abundant in spl.

MOB 6-8K RPM 100 PP 600 SPM #1-72

MOB 6-8K RPM 100 PP 600 SPM #1-72

MOB 6-8K RPM 100 PP 600 SPM #1-72

MOB 6-8K RPM 100 PP 600 SPM #1-72

MOB 6-8K RPM 100 PP 600 SPM #1-72

MOB 6-8K RPM 100 PP 600 SPM #1-72

MOB 6-8K RPM 100 PP 600 SPM #1-72

MOB 6-8K RPM 100 PP 600 SPM #1-72

MOB 6-8K RPM 100 PP 600 SPM #1-72

MOB 6-8K RPM 100 PP 600 SPM #1-72

MOB 6-8K RPM 100 PP 600 SPM #1-72

MOB 6-8K RPM 100 PP 600 SPM #1-72

MOB 6-8K RPM 100 PP 600 SPM #1-72

MOB 6-8K RPM 100 PP 600 SPM #1-72

MOB 6-8K RPM 100 PP 600 SPM #1-72

MOB 6-8K RPM 100 PP 600 SPM #1-72

MOB 6-8K RPM 100 PP 600 SPM #1-72

MOB 6-8K RPM 100 PP 600 SPM #1-72

MOB 6-8K RPM 100 PP 600 SPM #1-72

MOB 6-8K RPM 100 PP 600 SPM #1-72

MOB 6-8K RPM 100 PP 600 SPM #1-72

MOB 6-8K RPM 100 PP 600 SPM #1-72

MOB 6-8K RPM 100 PP 600 SPM #1-72

MOB 6-8K RPM 100 PP 600 SPM #1-72

MOB 6-8K RPM 100 PP 600 SPM #1-72

MOB 6-8K RPM 100 PP 600 SPM #1-72

MOB 6-8K RPM 100 PP 600 SPM #1-72

MOB 6-8K RPM 100 PP 600 SPM #1-72

MOB 6-8K RPM 100 PP 600 SPM #1-72

MOB 6-8K RPM 100 PP 600 SPM #1-72

MOB 6-8K RPM 100 PP 600 SPM #1-72

MOB 6-8K RPM 100 PP 600 SPM #1-72

MOB 6-8K RPM 100 PP 600 SPM #1-72

MOB 6-8K RPM 100 PP 600 SPM #1-72

MOB 6-8K RPM 100 PP 600 SPM #1-72

MOB 6-8K RPM 100 PP 600 SPM #1-72

MOB 6-8K RPM 100 PP 600 SPM #1-72

MOB 6-8K RPM 100 PP 600 SPM #1-72

MOB 6-8K RPM 100 PP 600 SPM #1-72

MOB 6-8K RPM 100 PP 600 SPM #1-72