

JOHN HANCOCK 32-27-64 (Giuseppe)

HORIZON
WELL
LOGGING

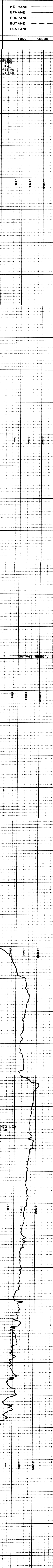
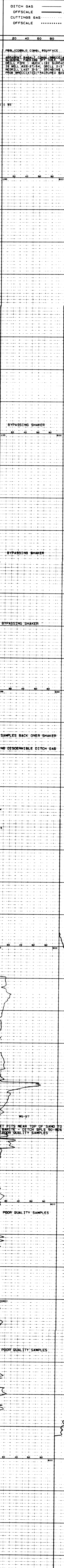
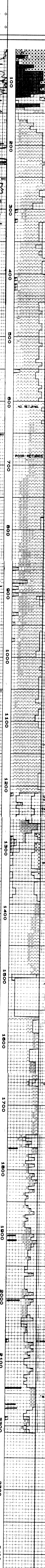
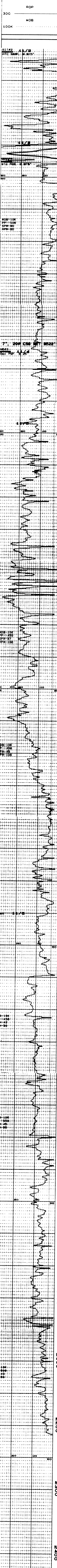
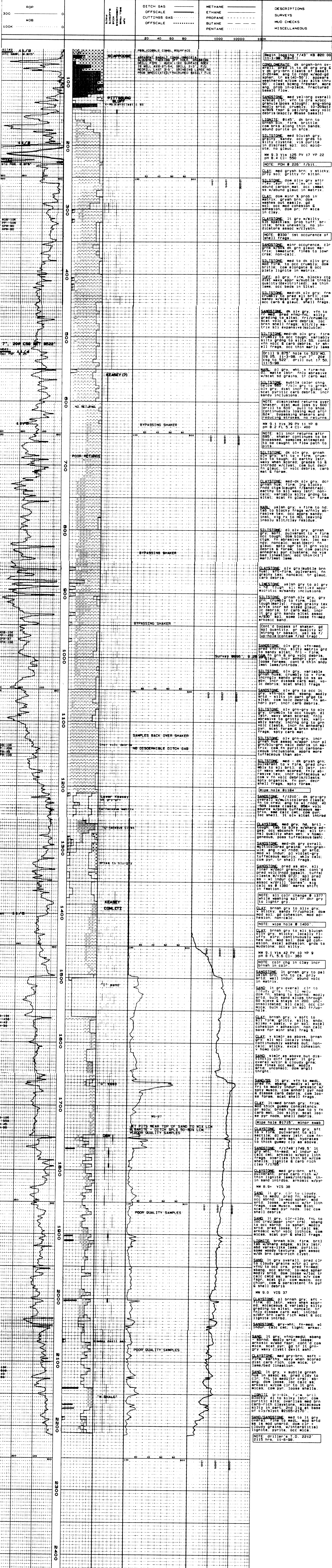
711 St. Andrews Way
Lompoc, California 93436
(805) 733-0972

COMPANY: ENERFIN RESOURCES NORTHWEST
WELL: J.H. 32-27-64 (Giuseppe)
LOCATION: 1632' S & 1387' W / NE corner
Sec 27, T6N, R4W, M 8.6M

ELEVATION: GL 1036' KB 1046'
FIELD: Mist
COUNTY: Columbia, Oregon
SPUD DATE: November 01, 1998
LOGGING DATES: Nov 01 to Nov 06, 1998
OPERATOR: Enerfin Resources Northwest
GEOLOGIST: Dave Huggins
DRILL REP: Rob Lucas-Production Specialties
CONTRACTOR: Taylor Drilling Inc.
#7
MUD COMPANY: GEO Drilling Fluids
MUD TYPE: Gel/PolyCarb-KCL
LOGGING GEOLOGIST: Jim Eastes, Joe Gallo

BIT SIZE: 9 875 in to 523'
6 25 in to 2212'
CASING: 12 00 in to 30'
7 00 in to 522'

CALIBRATION PER METHANE = 100 UNITS



REMARKS: [Detailed geological observations and notes corresponding to the log depth, including descriptions of rock textures, colors, and specific features like 'SCAPOOSE' and 'PITTSBURG'. Includes notes on sample quality and drilling operations.]

711 St. Andrews Way
Lompoc, California 93436
(805) 733-0972

COMPANY: ENERFIN RESOURCES NORTHWEST
WELL: J.H. 32-27-64 (Giuseppe)
LOCATION: 1632' S & 1387' W / NE corner
Sec 27, T6N, R4W, M 8.6M

ELEVATION: GL 1036' KB 1046'
FIELD: Mist
COUNTY: Columbia, Oregon
SPUD DATE: November 01, 1998
LOGGING DATES: Nov 01 to Nov 06, 1998
OPERATOR: Enerfin Resources Northwest
GEOLOGIST: Dave Huggins
DRILL REP: Rob Lucas-Production Specialties
CONTRACTOR: Taylor Drilling Inc.
#7
MUD COMPANY: GEO Drilling Fluids
MUD TYPE: Gel/PolyCarb-KCL
LOGGING GEOLOGIST: Jim Eastes, Joe Gallo

BIT SIZE: 9 875 in to 523'
6 25 in to 2212'
CASING: 12 00 in to 30'
7 00 in to 522'

CALIBRATION PER METHANE = 100 UNITS