

Howard 33-33-88



MICROSEISMOGRAMTM
LOG-CASED HOLE

COMPANY OREGON NATURAL GAS CORPORATION
 WELL HOWARD JOHNSON 33-33
 FIELD OLNEY GAS State OR
 COUNTY CLATSOP STATE OREGON
 Location 2036' NORTH & 2000' WEST FROM THE SOUTHEAST CORNER OF 1
 JAN 25 1982

Permanent Datum G.L. 08. 21 Ft. Above Perm. Datum Elev. KB 521
 Log Measured From K.B. D.F. 500
 Drilling Measured From K.B. G.L. 500
 Fun No. TND
 Date & Time Survey 12-22-81 @ 3:30 P.M.
 Date & Time Correlating N/A
 Type of Logging Operation N/A
 Depth, Meters 6756
 Depth, Feet 6748 to 2950
 Logged Interval 5-1/2 @ 6950

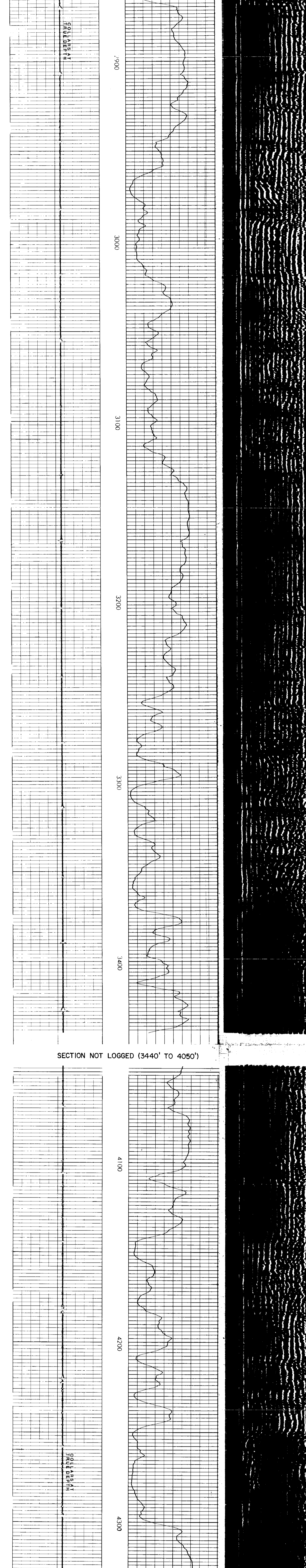
Front Collar - D.V. Tool 6955-468
 Squeeze Depth N/A 6800-6650 4270-4150
 Amount & Type Cement N/A
 Type Fluid in Hole WATER
 Fluid Level in Hole N/A
 Casing Depth (ft) N/A
 Approx. Logged Cam. Top 2880
 Calculated Cement Top N/A
 Max. Hole Temperature 130 F
 Tool No. 26250
 Spacing Recorded 4790
 Equipment - Location 9430 WOODLAND
 Recorded by PARNELLE
 Witnessed by STINSON

BORE HOLE RECORD		CASING RECORD	
Bit Size	From	To	Contrabzed Interval
			Scratched Interval
			Open Perforations

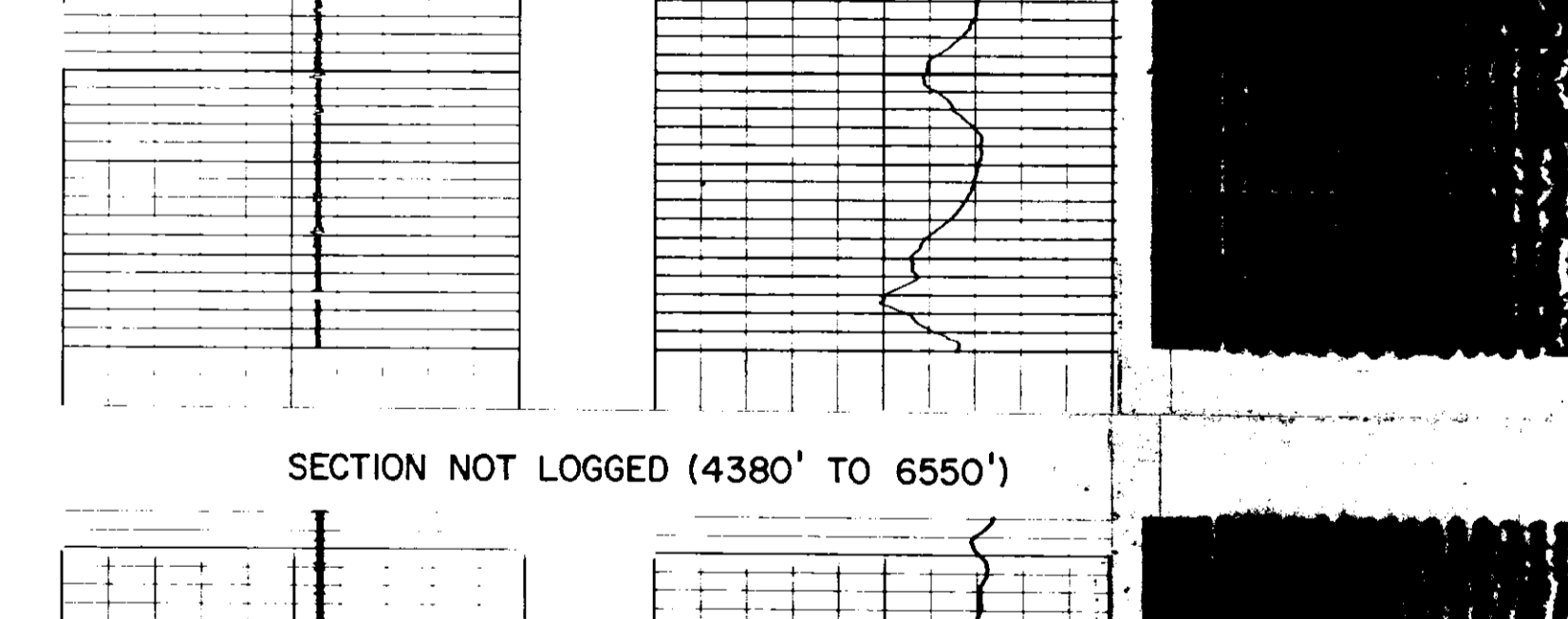
Service Ticket No. 054919
 R.M.C.

Remarks

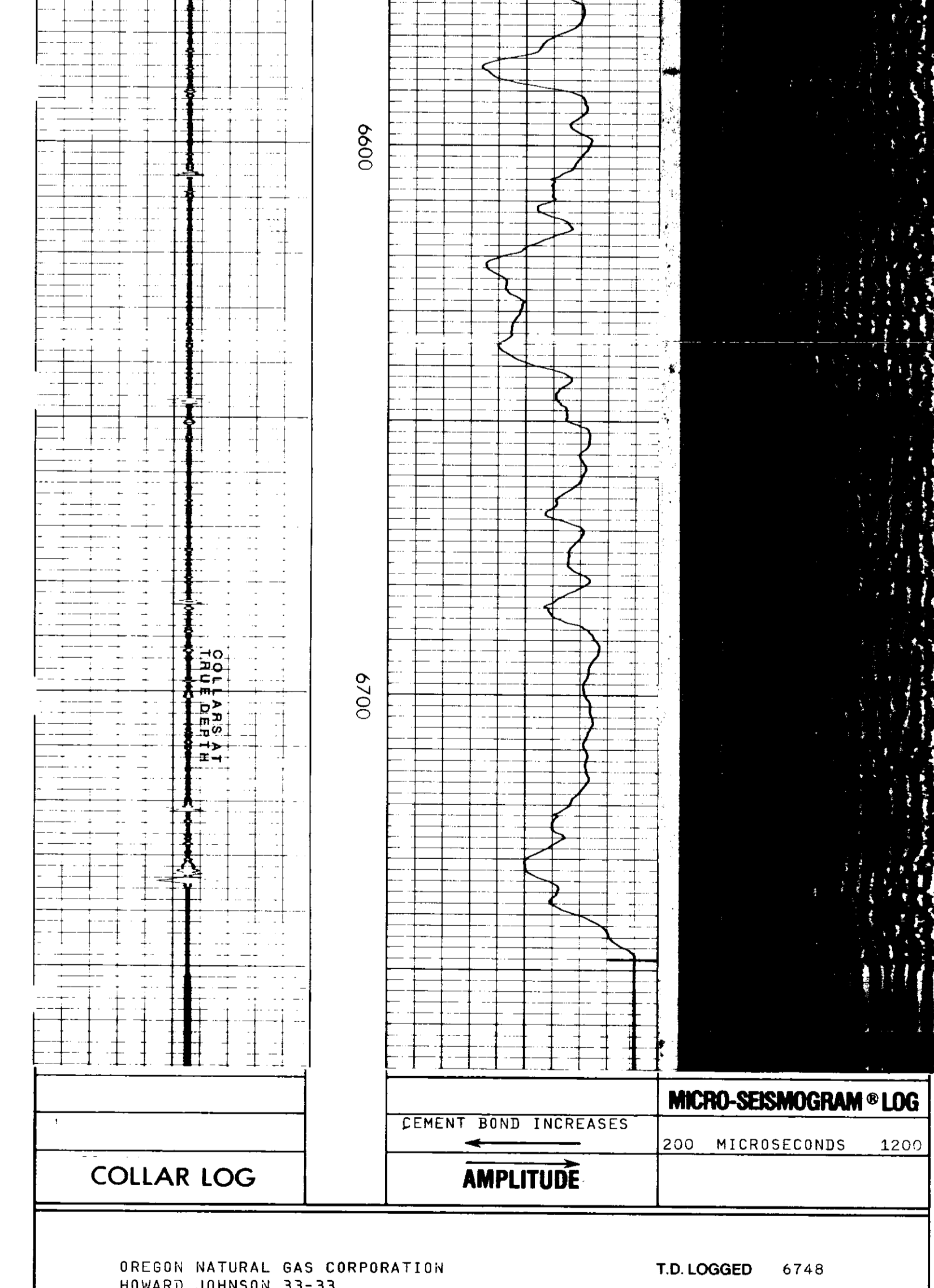
Welex does not guarantee the accuracy of any interpretation of log data, conversion of log data to physical rock parameters, or recommendations which may be given by Welex personnel or which may appear on the log or in any other form. Any use of such data, interpretations, conversions, or recommendations agrees that Welex is not responsible, except where due to gross negligence or willful misconduct, for any loss, damages, or expenses resulting from the use thereof.



SECTION NOT LOGGED (3440' TO 4050')



SECTION NOT LOGGED (4380' TO 6550')



OREGON NATURAL GAS CORPORATION
 HOWARD JOHNSON 33-33
 OLNEY GAS
 CLATSOP COUNTY, OREGON

T.D. LOGGED 6748
 T.D. DRILLER 6850
 T.D. WELEX 6756
 ELEV: KB 521 GL 500

REPEAT SECTION NOT ON DEPTH

