

COMPANY NAHAMA AND WEAGANT ENERGY CO.
 WELL GRUB CREEK JOHNSTON #11-30-65 R.D.1
 FIELD MIST
 COUNTY COLUMBIA STATE OREGON
 LOCATION 3627 S. 8800 E.
 GRUB CREEK JOHNSTON #11-30-65 R.D.1
 COUNTY COLUMBIA STATE OREGON
 LOCATION 3627 S. 8800 E.
 GRUB CREEK JOHNSTON #11-30-65 R.D.1
 COUNTY COLUMBIA STATE OREGON
 LOCATION 3627 S. 8800 E.
 GRUB CREEK JOHNSTON #11-30-65 R.D.1

The well name, location and borehole reference data were furnished by the customer

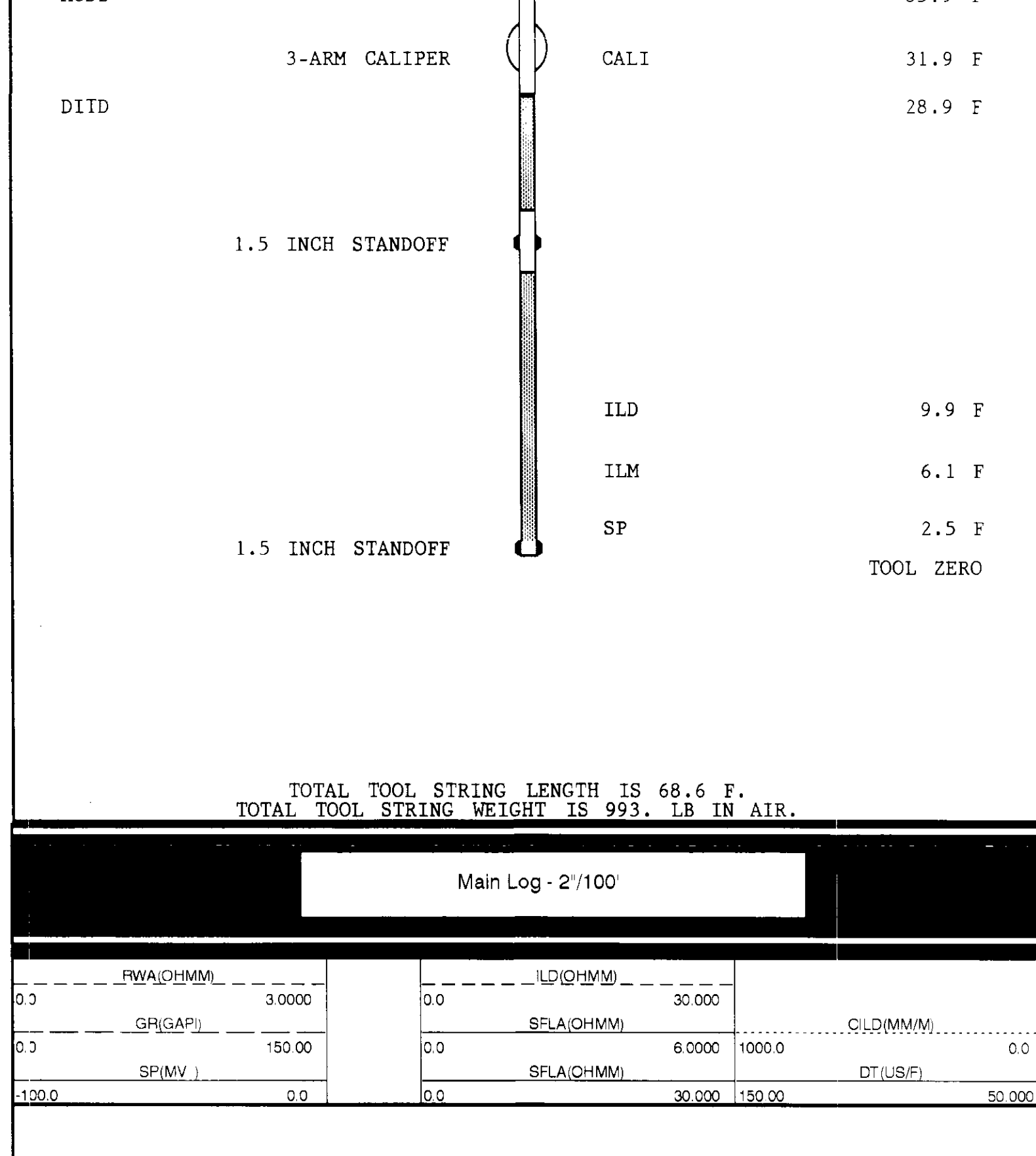
All interpretations are opinions based on inferences from electrical or other measurements and we do not warrant the accuracy or correctness of any interpretations, and we shall not be held responsible for any loss, costs, damages or expenses incurred or sustained by anyone resulting from any interpretations made by any of our officers, agents or employees. These interpretations are also subject to Change 4 of our General Terms and Conditions as set forth in our Schedule

Run No.	TWO
Service Order No.	624385
Drilling Fluid Level	8.0 F
Salinity	600.0 PPM
Rim @ BHT	1387 OHMM @ 90.0 DEGF
Rim @ BHT	1305 OHMM @ 90.0 DEGF
Logging Speed	3600.0 F/HR

EQUIPMENT DATA	
Tool Number 1	DS-EC 1342
Tool Number 2	DC-DA 1385
Tool Number 3	MCD-D 1237
Tool Number 4	SLS-MA 114
Tool Number 5	SLS-WA 1464
Tool Number 6	SGC-IC 1148
Tool Number 7	EM-BD 1348
Tool Number 8	SLS-DA 428
Tool Number 9	NLM-BC 207
Tool Number 10	
Tool Number 11	
Tool Number 12	

REMARKS:
 1.5" STANDOFFS RUN ON INDUCTION TOOL
 CMEZ CENTRALIZERS RUN ON SONIC TOOL
 THANK YOU FOR CHOOSING SCHLUMBERGER
 ORIGINAL HOLE SIDETRACKED AT 570'

LOGGING TOOL STRING SKETCH

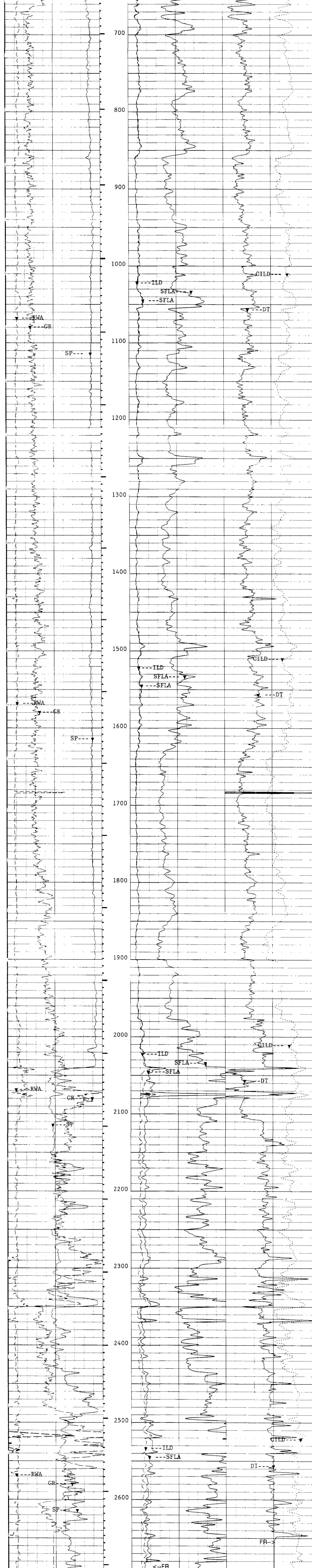


TOTAL TOOL STRING LENGTH IS 68.6 F.
 TOTAL TOOL STRING WEIGHT IS 993. LB IN AIR.

Main Log - 2"/100'

0.0	RWA(OHMM)	30000	0.0	ILD(OHMM)	30000	0.0	CLD(OHMM)	0.0
0.0	GR(GAPI)	150.00	0.0	SFLA(OHMM)	60000	1000.0	DT(LS/F)	50.00
100.0	SP(MV)	0.0	0.0	SFLA(OHMM)	30000	150.00		

CP 38.2 FILE 2 05-NOV-1993 18:06
 INPUT FILE(S) 6 CREATION DATE 05-NOV-1993 15:38



CP 38.2 FILE 2 05-NOV-1993 18:06
 INPUT FILE(S) 6 CREATION DATE 05-NOV-1993 15:38

0.0	RWA(OHMM)	30000	0.0	ILD(OHMM)	30000	0.0	CLD(OHMM)	0.0
0.0	GR(GAPI)	150.00	0.0	SFLA(OHMM)	60000	1000.0	DT(LS/F)	50.00
100.0	SP(MV)	0.0	0.0	SFLA(OHMM)	30000	150.00		

SENSOR MEASURE POINT TO TOOL ZERO	
SRAT 41.7 FEET	AMPL 44.1 FEET
CBFS 43.1 FEET	CBL 44.1 FEET
IT2 44.1 FEET	TT1 43.1 FEET
DSEC 39.3 FEET	TT3 40.3 FEET
TT4 44.1 FEET	TO 44.1 FEET
CBSL 44.1 FEET	TTSL 44.1 FEET
CALI 31.9 FEET	GR 62.7 FEET
ILM 6.1 FEET	ILD 9.9 FEET
SP 2.5 FEET	SFL 6.8 FEET
TENS 2.5 FEET	SPAR 2.5 FEET

PARAMETERS		
PARAMETER	VALUE	UNIT
SMB - Sonic Memory Board	DISA	
VDLR - Defn not found	2IN	
TOCA - TO Correction Status	DISA	
RATE - Firing Rate	15	HZ
DC - Downhole Gain	15	
DETE - Detection	E2	
NMSC - Near Minimum Sliding Gate	180	US
CBLG - CBL Gate Width	35	US
AMPL - Sonic Amplitude	2	
CBL - Cement Bond Log Amplitude	UT	
WFM - Waveform Mode	1	
SS - Sweep Speed	FAST	
TOD - TO Delay	DISA	
DTF - Delta-T Fluid	189.0000	US/F
DTM - Delta-T Matrix	56.0000	US/F
CDIS - Correction for Delta-T Shale, Empirical	100.000	
SPFS - Sonic Porosity Formula Select	R-H	
PP - Playback Processing	0.0	
DO - Depth Offset for Logical Unit L11	NORM	F
WMUD - Weight of Mud	10.1000	LB/G
MSEC - Medium Sonde Error Correction	8.00000	MM/M
SBR - Shoulder Bed Resistivity	1.00000	OHMM
DSEC - Deep Sonde Error Correction	6.70000	MM/M
FCD - Future Casing Diameter	4.50000	IN
NCJT - NCI Calibration Jig Type	GSRY	
FPHI - Formation Factor Formula Porosity	SPHI	
DWCO - Digitizer Word Count	512	
DSIN - Digitizer Sample Interval	5	US
DDEL - Digitizing Delay	2	US
SPVD - Start Point Vertical Depth	0.0	F
SWI - Sampling Interval for GCT Depth-Logging Tap	10.0000	M
BS - Bit Size	7.87500	IN
BHS - Borehole Status (Open or Cased)	OPEN	

COMPANY	NAHAMA AND WEAGANT ENERGY CO.	SCHL FR 2806.0 F
WELL	GRUB CREEK JOHNSTON #11-30-65 R.D.1	SCHL TD 2812.6 F
FIELD	MIST	DLR. TD 2811.0 F
		Elev. KB 643.7 F
		DF 642.7 F
COUNTY	COLUMBIA	STATE OREGON
		GL 633.7 F