

WELL "DONNELLY DOME #1" (KEYS#1)
API #36-069-00008
COMPANY STEELE ENERGY CO.

AREA SERVICE CREEK

LOCATION 275' S N1 335' E W1
SEC 28, T9S, R23E

COUNTY, STATE WHEELER CO., OR

MUD DATA
W WEIGHT
V VISCOSITY
F FILTER RATE
FC FILTER CAKE
SD SAND IN %

DATE 11-22-84 to 12-22-84

WESTERN GEO-ENGINEERS
"A SERVICE TO THE OIL AND GAS INDUSTRY"

RECEIVED - P110
AUG 26 1985
OFFICE OF GEOLOGY
SALT LAKE CITY

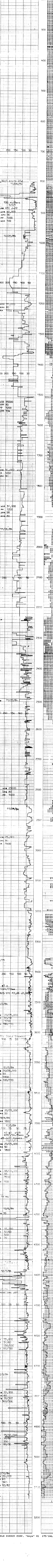
REMARKS
WELL ELEV. 2200'
KB 2812'
SALINITY IN PPM/CL
GASTRAT IN CC/30 MIN.
AGITATOR TYPE
MUD CYVAN
(GEN-WESTERN)
ROGER

138 3/8" CASING
98 5/8" TO 202'
TO

DEPTH 802' to 5136' ENGINEERS J. DUVALL
R. RALLS

LEGEND
CR CORE BIT
WCB WIRE LINE CB
OTHER DATA
TWP GAS
CG CONNECTION GAS
C CARBIDE GAS
CR CIRCULATE RETURN
NR NO RETURN
DST DRILL STEM TEST
DST INTERVAL
COR INTERVAL
R. BUTLER
J. DUVALL
R. RALLS

WESTERN GEO-ENGINEERS
Drilling Rate in FT/HR
S-1 Data



DEPTH	LITHOLOGY	OIL IN MUD or CUTTINGS	MUD ANALYSIS	CUTTING ANALYSIS	REMARKS
802'	TUF, BRN-OLV, SFT				
850'	BASALT, DK GY, PARTLY WTRD, QTZ VEIN FILLINGS				
900'	TUF, RED, SNDY BASALT, OLV, WTRD				
950'	TUF, RED				
1000'	BASALT, DK GY				
1050'	TUF, MED GRAY CLAYEY, PSS CARB, V SFT				
1100'	BASALT, DK GRAY DNS				
1150'	TUF, MED GRAY CLAYEY, PSS CARB, V SOFT				
1200'	BASALT, DK GRAY, DNS				
1250'	TUF, LT GRAY, CLAYEY, SFT, PSS CARB, V SFT				
1300'	BASALT, BLK, WTRD				
1350'	BASALT, BLK, DNS, OOL				
1400'	BASALT, DK GRAY - SFT DNS, CHALC PRSNT, SFT TUF, RED, SFT				
1450'	TUFF, RED-BRN TO GRAY, CRS, SFT				
1500'	BASALT, BLK, SUGRY, VES SFT, CHALC PRSNT, SFT VES FILLING, DNS, SFT TUF, WTRD				
1550'	BASALT, DK GRAY, DNS W ARND GY CLAY				
1600'	CHALC GRAY TO DK GRAY SFT, MED, OLV, VES FILLING				
1650'	BASALT, BLK, DNS, VES MED TO DRK GRAY, VES SAND, MED TO DRK GRAY, VES MED TO DRK GRAY, VES MED TO DRK GRAY, VES BRK RED, SFT, SOL				
1700'	DATE AND SITE FLOWS 10-20% QTZ 1/4 QTZ 60% ANDESITE FLOW				
1750'	TUF/COAL WELDED P, ANDESITIC, CRB TUF				
1800'	TUF/COAL ANTHRACITE, RED, RED, RED, RED, RED TUF/SILT, COAL THN BOD, INTACAL				
1850'	TUFF, GRAY/BRN, SFT WTRD COAL WTRD/TUFF TUFF WTRD TO CLASSTN GRY/W				
1900'	TUFF, GRAY & SFT				
1950'	TUFF, GRAY/LT GRAY, WTRD TO GRAY, BLU GR, SFT SOL				
2000'	ANDESITE CRST XLN, SFT GRY, WTRD, SFT, SFT 1/4 A, FRAC GAS, CHROM 100% C1				
2050'	CG 39U TUFF, DRK GRAY, SFT SFT, LT GRAY, SFT				
2100'	TUFF, MED GRAY, ANDC, ARUND, QTZ				
2150'	CG 55U CHROM 100% C1				
2200'	TUFF, LT GRAY, WTRD, SFT TUFF, MED GRAY, ANDC, SFT, SFT, SFT				
2250'	CG 80U TUFF, WHT, SFT, VTRD SOL, WTR, SFT, SFT, SFT				
2300'	CG 37U TUFF, WHT, SFT, WTRD SOL, WTR, SFT, SFT, SFT				
2350'	CG 35U TUFF, WHT, SFT, WTRD SOL, WTR, SFT, SFT, SFT				
2400'	CG 22U TUFF, RED, BRN, WTRD WHT, SFT, SFT, SFT				
2450'	CG 21U TUFF, WTR, SFT, SFT MED, SFT, SFT, SFT, SFT				
2500'	CG 39U TUFF, WH/BLU, SFT, SFT CG 105U TUFF, CLAY, VAR, SFT SOL				
2550'	CG 80U TUFF, WTR, SFT, SFT CG 74U TUFF, WTR, SFT, SFT				
2600'	TUFF, CLAY, GRAY, VAR, SFT, SOL, SFT				
2650'	CG 69U CHROM 100% C1 TUFF, GRAY/WHT, CLAY, SFT				
2700'	CG 75U TUFF, CLAY, GRAY, SFT CHROM 100% C1				
2750'	CG 95U TUFF, A/A, COAL CHROM 99% C1 1% A2				
2800'	CG 90U COAL, GRAY, INTACAL CHROM 98% C1 2% C2				
2850'	CG 82U TUFF, BLU, GREEN, WH MED, BRN, WTRD, SFT				
2900'	CG 76U TUFF, GRAY, CLAY, SFT SFT, BRN, INTACAL, SFT				
2950'	CG 110U CHROM 100% C1 TUFF, BLU, GRAY, VAR				
3000'	CG 75U CHROM 100% C1 TUFF, SFT, VARIGATED				
3050'	WHT, GRAY, SFT, SFT SFT, SFT, SFT, SFT				
3100'	CG 70U CHROM 100% C1 TUFF, BRN, MED, BRN				
3150'	CG 97U CHROM 100% C1 TUFF, BRN, MED, BRN				
3200'	CG 95U CHROM 100% C1 TUFF, BRN, MED, BRN				
3250'	CG 69U TUFF, BRN, MED, BRN SFT, SFT, SFT, SFT				
3300'	CG 65U CHROM 100% C1 TUFF, BRN, MED, BRN				
3350'	CG 70U TUFF, BRN, MED, BRN SFT, SFT, SFT, SFT				
3400'	CG 70U TUFF, BRN, MED, BRN SFT, SFT, SFT, SFT				
3450'	CG 70U TUFF, BRN, MED, BRN SFT, SFT, SFT, SFT				
3500'	CG 70U TUFF, BRN, MED, BRN SFT, SFT, SFT, SFT				
3550'	CG 70U TUFF, BRN, MED, BRN SFT, SFT, SFT, SFT				
3600'	CG 70U TUFF, BRN, MED, BRN SFT, SFT, SFT, SFT				
3650'	CG 70U TUFF, BRN, MED, BRN SFT, SFT, SFT, SFT				
3700'	CG 70U TUFF, BRN, MED, BRN SFT, SFT, SFT, SFT				
3750'	CG 70U TUFF, BRN, MED, BRN SFT, SFT, SFT, SFT				
3800'	CG 70U TUFF, BRN, MED, BRN SFT, SFT, SFT, SFT				
3850'	CG 70U TUFF, BRN, MED, BRN SFT, SFT, SFT, SFT				
3900'	CG 70U TUFF, BRN, MED, BRN SFT, SFT, SFT, SFT				
3950'	CG 70U TUFF, BRN, MED, BRN SFT, SFT, SFT, SFT				
4000'	CG 70U TUFF, BRN, MED, BRN SFT, SFT, SFT, SFT				
4050'	CG 70U TUFF, BRN, MED, BRN SFT, SFT, SFT, SFT				
4100'	CG 70U TUFF, BRN, MED, BRN SFT, SFT, SFT, SFT				
4150'	CG 70U TUFF, BRN, MED, BRN SFT, SFT, SFT, SFT				
4200'	CG 70U TUFF, BRN, MED, BRN SFT, SFT, SFT, SFT				
4250'	CG 70U TUFF, BRN, MED, BRN SFT, SFT, SFT, SFT				
4300'	CG 70U TUFF, BRN, MED, BRN SFT, SFT, SFT, SFT				
4350'	CG 70U TUFF, BRN, MED, BRN SFT, SFT, SFT, SFT				
4400'	CG 70U TUFF, BRN, MED, BRN SFT, SFT, SFT, SFT				
4450'	CG 70U TUFF, BRN, MED, BRN SFT, SFT, SFT, SFT				
4500'	CG 70U TUFF, BRN, MED, BRN SFT, SFT, SFT, SFT				
4550'	CG 70U TUFF, BRN, MED, BRN SFT, SFT, SFT, SFT				
4600'	CG 70U TUFF, BRN, MED, BRN SFT, SFT, SFT, SFT				
4650'	CG 70U TUFF, BRN, MED, BRN SFT, SFT, SFT, SFT				
4700'	CG 70U TUFF, BRN, MED, BRN SFT, SFT, SFT, SFT				
4750'	CG 70U TUFF, BRN, MED, BRN SFT, SFT, SFT, SFT				
4800'	CG 70U TUFF, BRN, MED, BRN SFT, SFT, SFT, SFT				
4850'	CG 70U TUFF, BRN, MED, BRN SFT, SFT, SFT, SFT				
4900'	CG 70U TUFF, BRN, MED, BRN SFT, SFT, SFT, SFT				
4950'	CG 70U TUFF, BRN, MED, BRN SFT, SFT, SFT, SFT				
5000'	CG 70U TUFF, BRN, MED, BRN SFT, SFT, SFT, SFT				
5050'	CG 70U TUFF, BRN, MED, BRN SFT, SFT, SFT, SFT				
5100'	CG 70U TUFF, BRN, MED, BRN SFT, SFT, SFT, SFT				
5150'	CG 70U TUFF, BRN, MED, BRN SFT, SFT, SFT, SFT				
5200'	CG 70U TUFF, BRN, MED, BRN SFT, SFT, SFT, SFT				