

COMPANY H. F. RIDDLE
 Location of Well

WELL KIESEL NO. 1
 ML-S-6R

FIELD NYSSA
 LOCATION 8-19S-47E WM

COUNTY MALHEUR
 COUNTY MALHEUR
 STATE OREGON
 Elevation B.F. of G.L. 2177
 FILING NO.

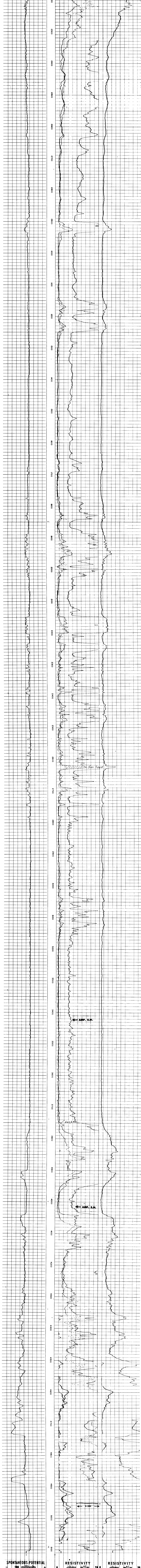
RUN NO. 11-5-54
 Date 5-10-55
 Fee Recorded 4584
 C.R. Schum

Depth Down 6106
 Depth Datum 6106

Verity 4.5
 Resist. 1.6 @ 18 F
 Res. BIT 8.0 @ 18 F
 BH Log 8.0 @ 18 F
 BH Temp. 9.8
 BH State 1.5
 AO 24
 21 hr
 1708-ETV
 Recorded by N. R. Riddle
 Witness by

REMARKS

SPONTANEOUS-POTENTIAL Icomillivolts	RESISTIVITY -ohms. m ² /m		RESISTIVITY -ohms. m ² /m	
	20 0	20 0	20 0	20 0
	AM 16"	AM 16"	AM 64"	AM 64"
	200	200	200	200
	20	20		
	200	200		



SPONTANEOUS-POTENTIAL 100 millivolts	RESISTIVITY -ohms. m ² /m		RESISTIVITY -ohms. m ² /m	
	20 0	20 0	20 0	20 0
	AM 16"	AM 16"	AM 64"	AM 64"
	200	200	200	200
	20	20		
	200	200		