

Schlumberger

**DUAL INDUCTION-SFL
WITH LINEAR CORRELATION LOG**

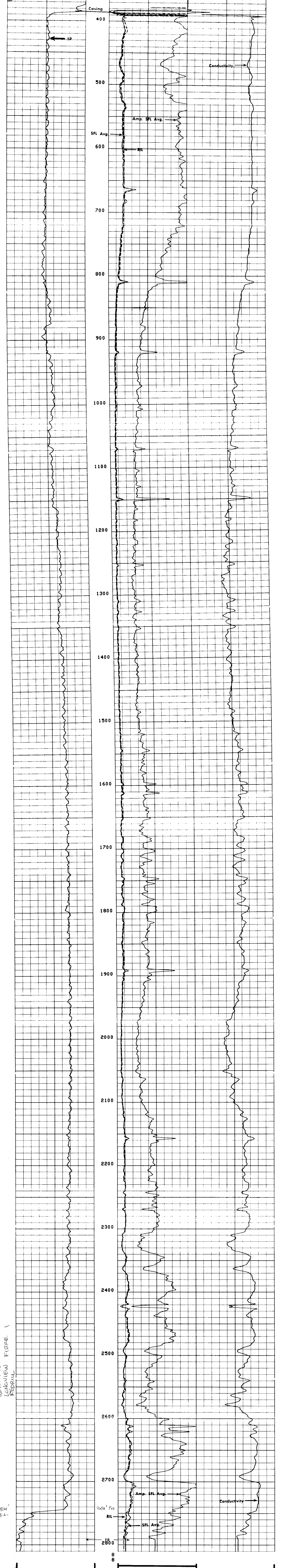
COUNTY: COLUMBIA FIELD: MIST NEHALEM BASIN LOCATION: LONGVIEW FIBRE #1 WELL: PEDRILL NO. 1 COMPANY: REICHOLD ENERGY	COUNTY: COLUMBIA STATE: OREGON LOCATION: 1070 NORTH E. 304 EAST FROM THE SOUTHWEST CORNER OF: SERIAL NO SEC TWP RANGE 11 2W 5W
COMPANY: REICHOLD ENERGY CORPORATION WELL: LONGVIEW FIBRE NO. 1 REDRILL NO. 1 FIELD: MIST NEHALEM BASIN	Other Services: 1070 NORTH E. 304 EAST FROM THE SOUTHWEST CORNER OF: SERIAL NO SEC TWP RANGE 11 2W 5W
Permanent Datum: G.L. 833.6 Log Measured From: KB 10.7 Above Perm. Datum Drilling Measured From: KB 10.7 Above Perm. Datum Date: 5-9-80 Run No.: 2895 Depth - Logger (Schl): 2793 Depth - Logger (DRLR): 2792 Depth - Log Interval: 2792 Depth - Log Interval: 2792 Casing Driller: 385 @ 386 Casing - Logger: 385 @ 386 Bit Size: 6 1/2" Type Fluid in Hole: LIQUIDUSIL FORTITE Density: 73 @ 72 pH: 10 @ 10 Fluid Loss: 1.0 @ 1.0 Source of Sample: FLOW LINE Rim @ Meas. Temp.: 1.0 @ 1.0 Rim @ Meas. Temp.: 2.05 @ 6.2 F Rim @ Meas. Temp.: 2.13 @ 58 F Source: Rm @ 1.0 @ 1.0 Rm @ BHT: 1.0 @ 96 F TIME: 1:50 Logger on Bottom: 1:50 Max. Rec. Temp.: 96 F Equip. Location: KAISER/ROWE Witnessed By: BRUER	Log Measured From: G.L. 833.6 Drilling Measured From: KB 10.7 Above Perm. Datum Date: 5-9-80 Run No.: 2895 Depth - Logger (Schl): 2793 Depth - Logger (DRLR): 2792 Depth - Log Interval: 2792 Depth - Log Interval: 2792 Casing Driller: 385 @ 386 Casing - Logger: 385 @ 386 Bit Size: 6 1/2" Type Fluid in Hole: LIQUIDUSIL FORTITE Density: 73 @ 72 pH: 10 @ 10 Fluid Loss: 1.0 @ 1.0 Source of Sample: FLOW LINE Rim @ Meas. Temp.: 1.0 @ 1.0 Rim @ Meas. Temp.: 2.05 @ 6.2 F Rim @ Meas. Temp.: 2.13 @ 58 F Source: Rm @ 1.0 @ 1.0 Rm @ BHT: 1.0 @ 96 F TIME: 1:50 Logger on Bottom: 1:50 Max. Rec. Temp.: 96 F Equip. Location: KAISER/ROWE Witnessed By: BRUER

FOLD HERE The well name, location and borehole reference data were furnished by the customer.

Run No.: 2895 Service Order No.: 123964 Fluid Level: F Salinity ppm. cl: --- Speed F.P.M.: --- EQUIPMENT DATA Panel No.: 232 Cartridge No.: 47 Sonde No.: 35 Mem. Panel No.: CSU G.R. Panel No.: --- G.R. Cart No.: --- Tape Recorder - (TTR): --- Depth Encoder - (DRE): --- Pressure Wheel - (CPM): --- Type Centralizers: FIN Stand Off - Inches: 1 1/2 CALIBRATION DATA SBR: 1.0 Sonde Error - ILM: 8.17 Sonde Error - ILD: 5.5 G.R. BKG. - CPS: --- G.R. Source - CPS: --- S.E. Set In Hole - Depth: --- S.E. Corr. - Hole Size: --- LOGGING DATA SBR: 1.0 Sonde Error Log - ILM: 8.17 Sonde Error Log - ILD: 5.5 G.R. Scale per 100 Div.: --- G.R. - T.C. Log: ---	SCALE CHANGES Type Log: --- Depth: --- Scale Up Hole: --- Scale Down Hole: --- REMARKS
---	---

All interpretations are opinions based on inferences from electrical or other measurements and we cannot, and do not guarantee the accuracy or correctness of any interpretations, and we shall not, except in the case of gross or willful negligence on our part, be liable or responsible for any loss, costs, damage or expense incurred or sustained by anyone resulting from any interpretation made by any of our officers, agents or employees. These interpretations are also subject to Clause 4 of our General Terms and Conditions as set out in our current Price Schedule.

SPONTANEOUS POTENTIAL MILLIVOLTS -10 +	RESISTIVITY OHMS. M ² /M DEEP INDUCTION R_{ILD} 0 30 0 300 SPHERICALLY FOCUSED LOG R_{SFL} 0 30 0 300 AMP. SPHERICALLY FOCUSED LOG	CONDUCTIVITY MILLIMHOS/M DEEP INDUCTION 1000 0
---	---	---



SPONTANEOUS-POTENTIAL MILLIVOLTS -10 +	RESISTIVITY OHMS. M ² /M DEEP INDUCTION R_{ILD} 0 30 0 300 SPHERICALLY FOCUSED LOG R_{SFL} 0 30 0 300 AMP. SPHERICALLY FOCUSED LOG	CONDUCTIVITY MILLIMHOS/M DEEP INDUCTION 1000 0
COMPANY: REICHOLD ENERGY CORPORATION WELL: LONGVIEW FIBRE NO. 1 PEDRILL NO. 1 FIELD: MIST NEHALEM BASIN COUNTY: COLUMBIA STATE: OREGON	SCHL. FR: 2793 SCHL. TD: 2799 DRLR. TD: 2803 Elev. KB: 844.1 DF: --- CL: 833.6	