



DUAL INDUCTION
GUARD LOG

2"=100'

COMPANY REICHHOLD ENERGY CORPORATION

WELL LONGVIEW FIBER 12-33 REDRILL

FIELD MIST

COUNTY COLUMBIA STATE OREGON

Location 1763' SOUTH AND 705' EAST
FROM THE NORTHWEST CORNER OF:
C/AVL GAMMA

Sec. 33 Twp. 7N Rge. 5W

Permanent Datum G.L. 897.97

Log Measured From K.B. OR 11.4

Drilling Measured From D.F. Above Perm. Datum

Date 05-21-81

Run No. ONE

Depth-Driller 2472

Depth-Welex 2470

Top Log Line 441

Casing-Driller 441

Casing-Welex 441

Bit Size 6 1/4

Type Fluid in Hole LIENSULF

Dens. Visc. 9.9 #5

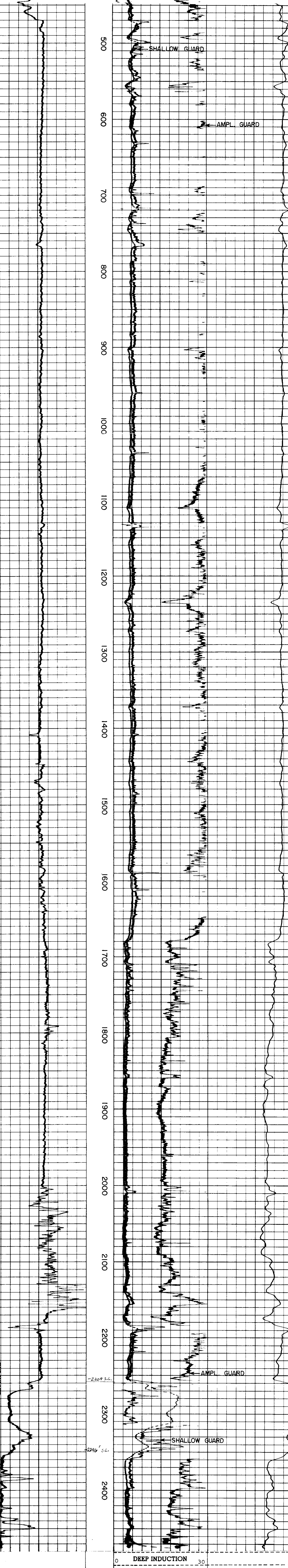
PH. Fluid Loss 10.0 1.4.0ml

Change in Mud Type or Additional Samples		Type Log	Depth	SCALE CHANGES	
Date	Sample No			Scale Up Hole	Scale Down Hole
Type Fluid in Hole					
Dens.	Visc.				
ph	Fluid Loss				
Source of Sample					
R _{av} @ Meas. Temp.	@	°F	Run No.	Tool Type and No.	Pad Type
R _{av} @ Meas. Temp.	@	°F			Tool Position
R _{av} @ Meas. Temp.	@	°F			Other
Source: R _{av} R _{mc}					
R _{av} @ BHT	1.20 @ 110°	°F			
R _{mc} BHT	0.69 @ 110°	°F			
R _{av} BHT	1.20 @ 110°	°F			
R. M. C.					

Welex does not guarantee the accuracy of any interpretation of log data, conversion of log data to physical rock parameters, or recommendations which may be given by Welex personnel or which may appear on the log or in any other form. Any use of such data, interpretations, conversions, or recommendations agrees that Welex is not responsible, except where due to gross negligence or willful misconduct, for any loss, damages, or expenses resulting from the use thereof.

2"=100'

POTENTIAL MILLIVOLTS	RESISTIVITY OHMS M ² /M	CONDUCTIVITY M MHOS/M
0	SHALLOW GUARD 30	1000 DEEP INDUCTION 0
0	O. S. 300	2000 O. S. 1000
0	AMPLIFIED GUARD 6	
0	DEEP INDUCTION 30	
0	O. S. 300	



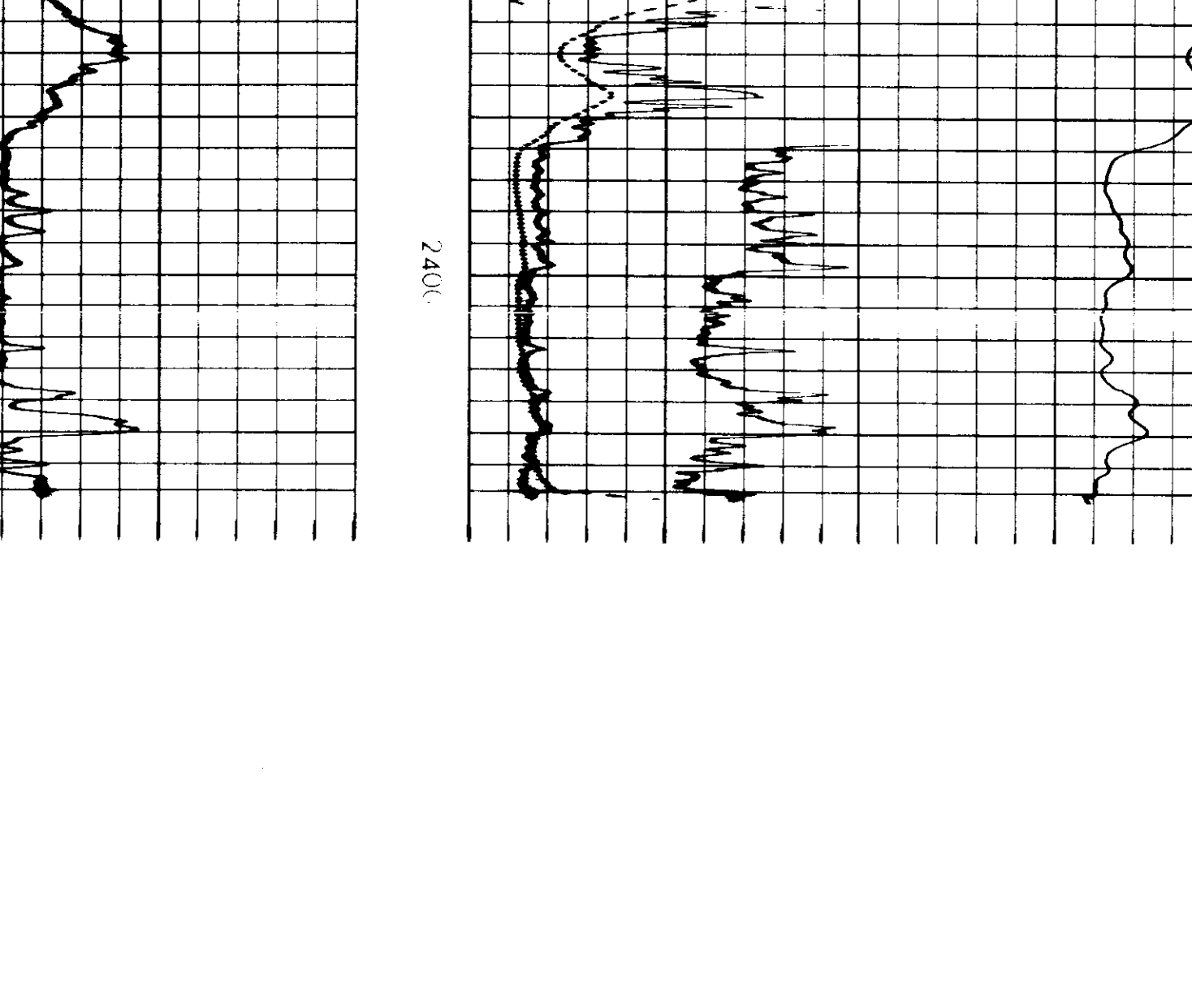
POTENTIAL MILLIVOLTS	RESISTIVITY OHMS M ² /M	CONDUCTIVITY M MHOS/M
0	SHALLOW GUARD 30	1000 DEEP INDUCTION 0
0	O. S. 300	2000 O. S. 1000
0	AMPLIFIED GUARD 6	
0	DEEP INDUCTION 30	
0	O. S. 300	

Rmf. 0.69 at 110 °F

REICHHOLD ENERGY CORPORATION
LONGVIEW FIBER 12-33 REDRILL
MIST
COLUMBIA COUNTY, OREGON

T.D. LOGGED 2470
T.D. DRILLER 2475
T.D. WELEX 2472
ELEV. GL. 887.97 KB. 899.37

REPEAT SECTION



11/27/81 12-35 20017 20017