



COMPENSATED
ACOUSTIC VELOCITY
LOG

COMPANY: REICHHOLD ENERGY CORPORATION
WELL: LONGVIEW FIBER 12-33
FIELD: MIST
STATE: OREGON

COUNTY: COLUMBIA
LOCALITY: SOUTH 40S1 EAST OF T1E D1S
17S31 W3S1 S10R25 S1

County: 23
Town: 2N
Range: 29E
Section: 23
Twp: 2N
Range: 29E
Section: 23

Log Measured From: K-31
Log Interval: 10' @ 81
Depth: 2395
Casing: 4.41

Drill: 2 1/4
Casing: 4.41
Casing: 4.41

Drill: 2 1/4
Casing: 4.41
Casing: 4.41

Drill: 2 1/4
Casing: 4.41
Casing: 4.41

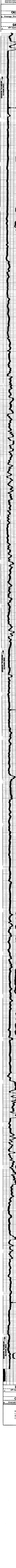
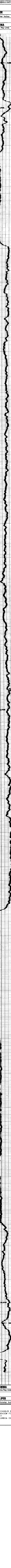
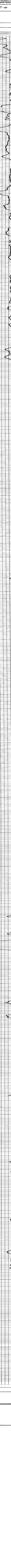
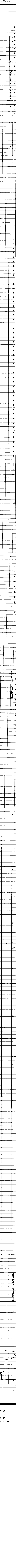
Drill: 2 1/4
Casing: 4.41
Casing: 4.41

Drill: 2 1/4
Casing: 4.41
Casing: 4.41

Drill: 2 1/4
Casing: 4.41
Casing: 4.41

Drill: 2 1/4
Casing: 4.41
Casing: 4.41

Drill: 2 1/4
Casing: 4.41
Casing: 4.41



REICHHOLD ENERGY CORPORATION
LONGVIEW FIBER 12-33
MIST
COLUMBIA COUNTY, OREGON
T.D. LOGGED 2395
T.D. DRILLER 2414
T.D. WELLEX 2401
ELEV: KB 899.37 6L 887.97