

COMPANY: NADIANA & RIVERVIEW ENERGY COMPANY  
 WELL: [BLANK]  
 FIELD: [BLANK] COUNTY: COVINGTON STATE: LOUISIANA  
 APN No: [BLANK] Location: [BLANK] DATE: 10/1/83 TIME: 1:10:30  
 Other Services: [BLANK]

PERMANENT DEPTH: 1164.7  
 WELL: [BLANK] FIELD: [BLANK] COUNTY: [BLANK] STATE: [BLANK]  
 LOGGING MEASURED FROM: K1  
 DRILLING LOG NUMBER: 1164.7  
 DATE: [BLANK] TIME: [BLANK] LOCATION: [BLANK]

RESISTIVITY EQUIPMENT DATA  
 Run No: [BLANK] Tool Type and No: [BLANK] Pad Type: [BLANK]  
 R<sub>w</sub> @ Meas Temp: [BLANK] R<sub>w</sub> @ Meas Temp: [BLANK]  
 R<sub>w</sub> @ Meas Temp: [BLANK] R<sub>w</sub> @ Meas Temp: [BLANK]  
 R<sub>w</sub> @ Meas Temp: [BLANK] R<sub>w</sub> @ Meas Temp: [BLANK]

EQUIPMENT DATA  
 Run No: [BLANK] Run No: [BLANK] Run No: [BLANK] Run No: [BLANK]  
 Serial No: [BLANK] Serial No: [BLANK] Serial No: [BLANK] Serial No: [BLANK]  
 Model No: [BLANK] Model No: [BLANK] Model No: [BLANK] Model No: [BLANK]  
 Diameter: [BLANK] Diameter: [BLANK] Diameter: [BLANK] Diameter: [BLANK]  
 Detector Model No: [BLANK] Log Type: [BLANK] Source Type: [BLANK]  
 Type: [BLANK] Source Type: [BLANK] Source Type: [BLANK]  
 Length: [BLANK] Serial No: [BLANK] Serial No: [BLANK]  
 Distance to Source: [BLANK] Strength: [BLANK] Strength: [BLANK]

LOGGING DATA  
 GENERAL: [BLANK] GAMMA: [BLANK] ACQUSTIC: [BLANK] DENSITY: [BLANK] NEUTRON: [BLANK]  
 Run No: [BLANK] Scale: [BLANK] Scale: [BLANK] Scale: [BLANK] Scale: [BLANK]  
 From: [BLANK] To: [BLANK] L: [BLANK] R: [BLANK] L: [BLANK] R: [BLANK] L: [BLANK] R: [BLANK] L: [BLANK] R: [BLANK]

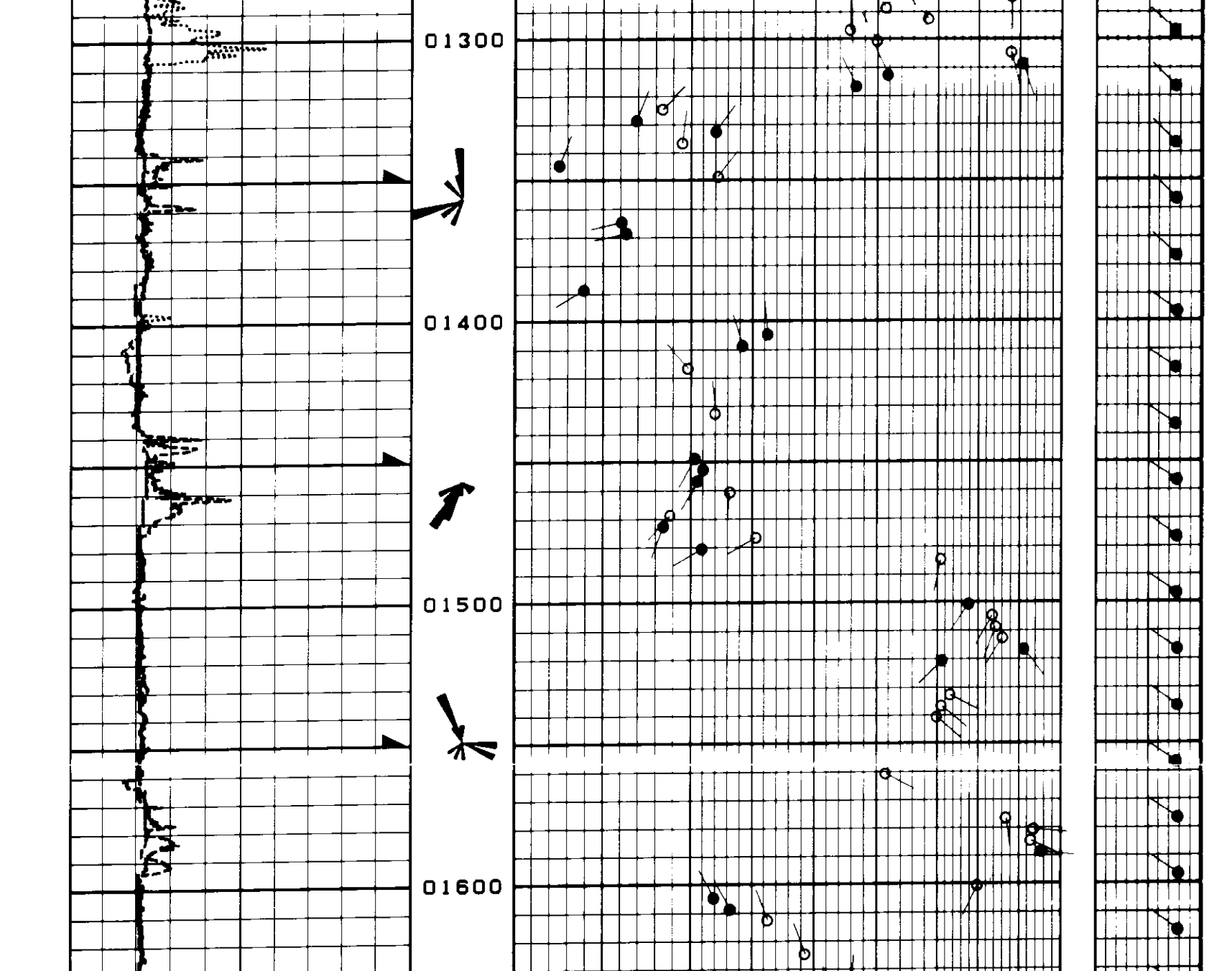
Source of Samples: [BLANK]  
 Date: [BLANK] Sample No: [BLANK]  
 Type Fluid in Hole: [BLANK]

Part Number 26000

Service Ticket No	1164.7	API Serial No.	68248	PGM Version	0089-26	COMPUTED FROM	07:29
-------------------	--------	----------------	-------	-------------	---------	---------------	-------

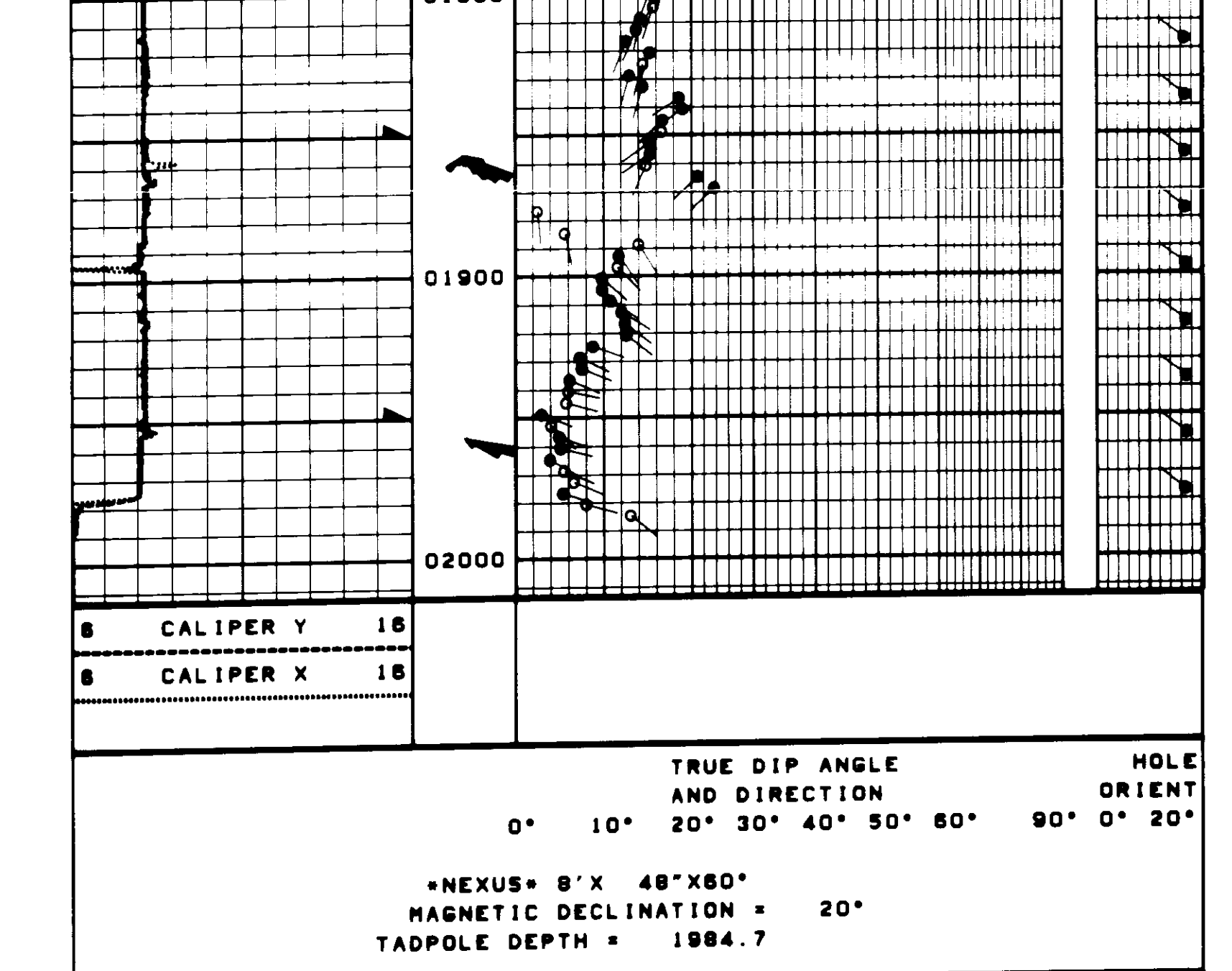
\*NEXUS\* 8' X 48" X 60"  
 MAGNETIC DECLINATION = 20°  
 TADPOLE DEPTH = 1164.7

TRUE DIP ANGLE AND DIRECTION HOLE ORIENT  
 0° 10° 20° 30° 40° 50° 60° 90° 0° 20°



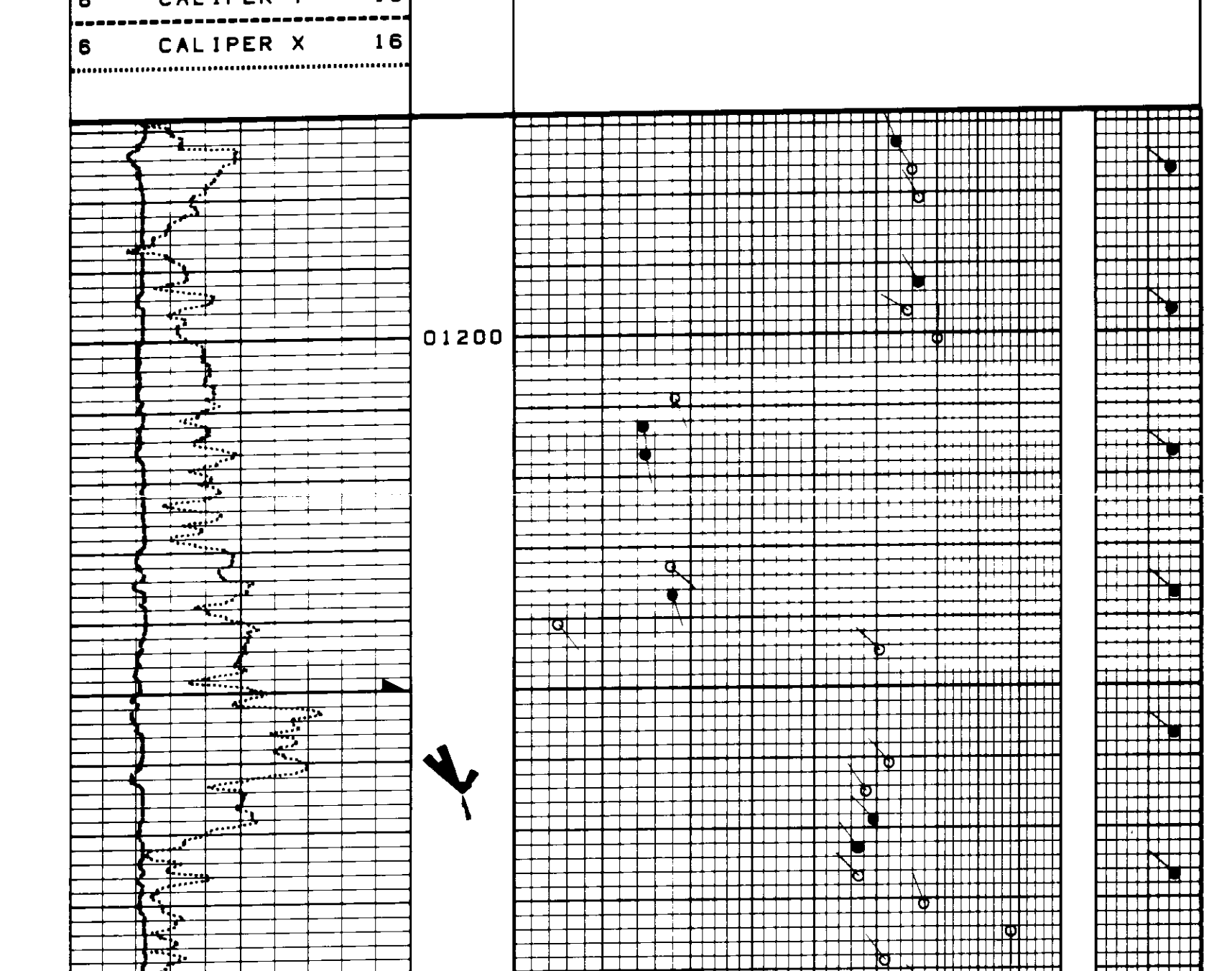
\*NEXUS\* 8' X 48" X 60"  
 MAGNETIC DECLINATION = 20°  
 TADPOLE DEPTH = 1984.7

TRUE DIP ANGLE AND DIRECTION HOLE ORIENT  
 0° 10° 20° 30° 40° 50° 60° 90° 0° 20°



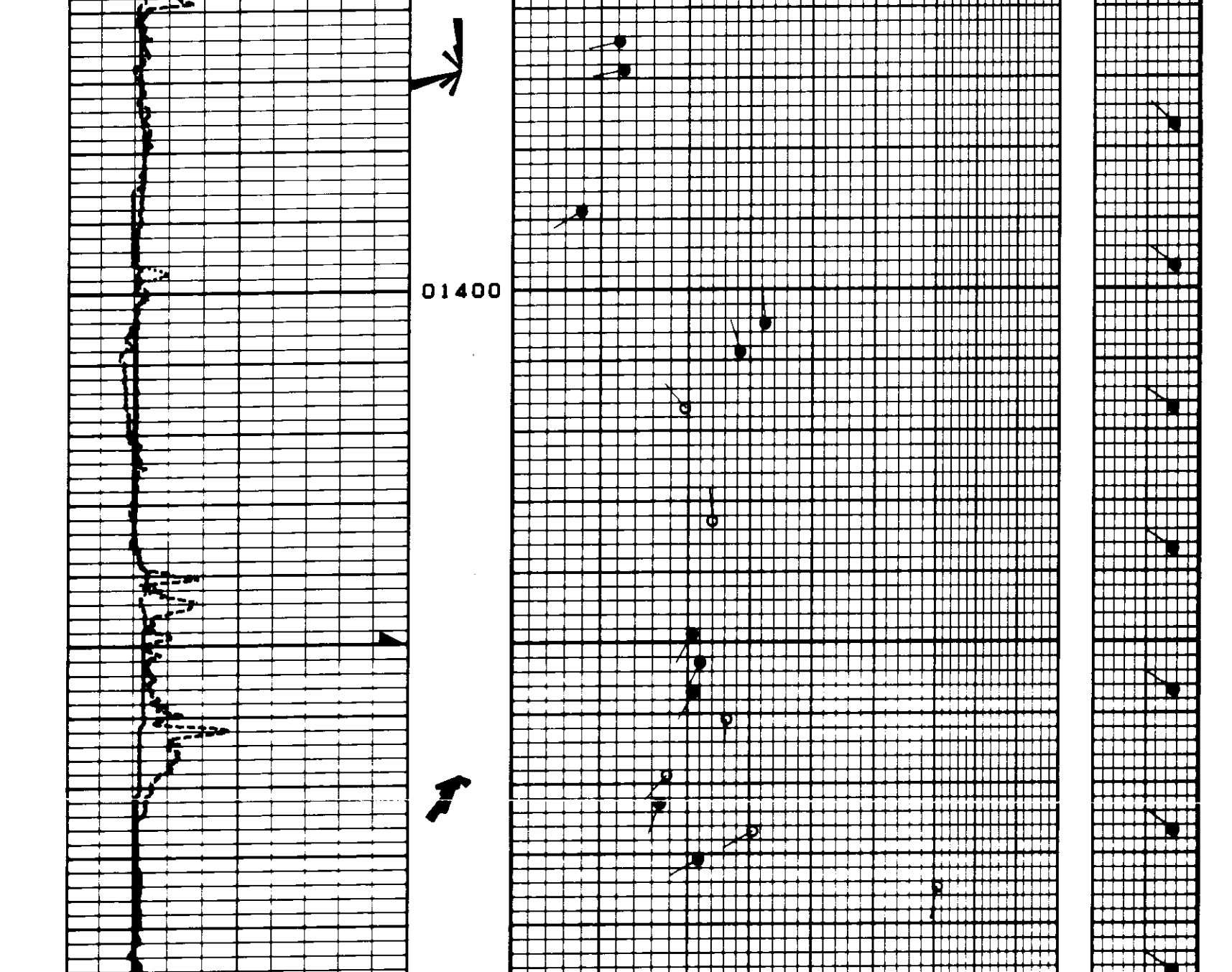
\*NEXUS\* 8' X 48" X 60"  
 MAGNETIC DECLINATION = 20°  
 TADPOLE DEPTH = 1164.7

TRUE DIP ANGLE AND DIRECTION HOLE ORIENT  
 0° 10° 20° 30° 40° 50° 60° 90° 0° 20°



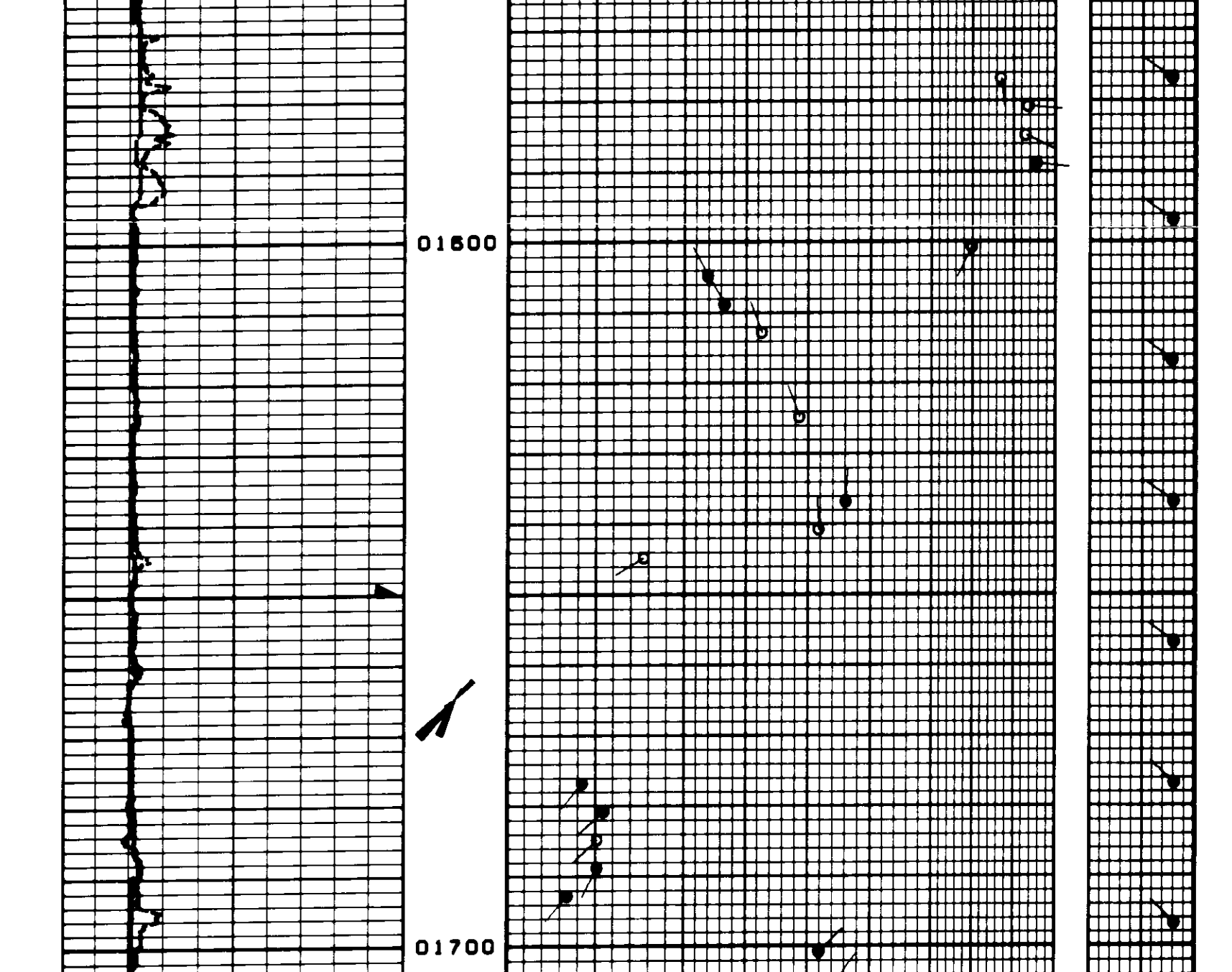
\*NEXUS\* 8' X 48" X 60"  
 MAGNETIC DECLINATION = 20°  
 TADPOLE DEPTH = 1984.7

TRUE DIP ANGLE AND DIRECTION HOLE ORIENT  
 0° 10° 20° 30° 40° 50° 60° 90° 0° 20°



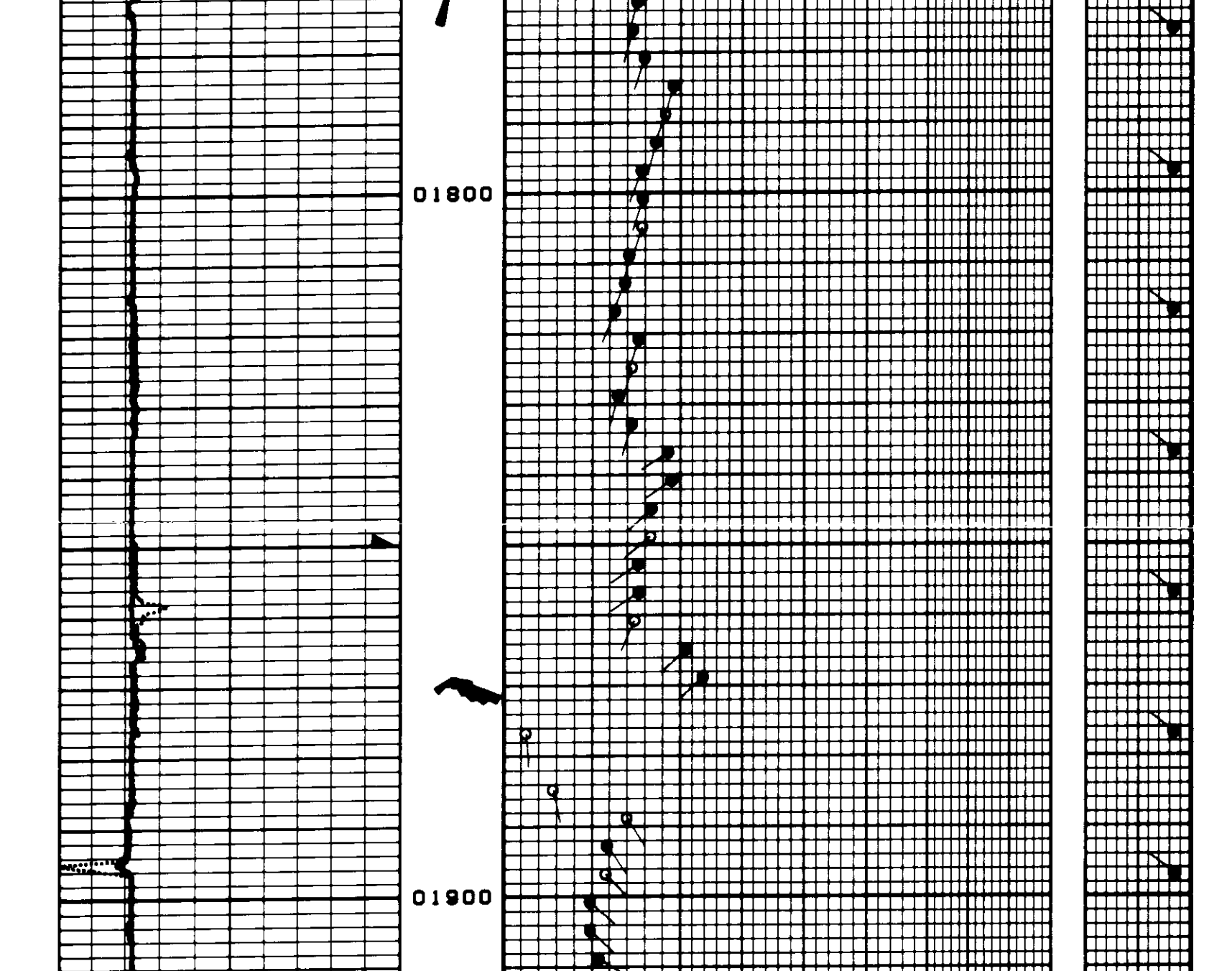
\*NEXUS\* 8' X 48" X 60"  
 MAGNETIC DECLINATION = 20°  
 TADPOLE DEPTH = 1984.7

TRUE DIP ANGLE AND DIRECTION HOLE ORIENT  
 0° 10° 20° 30° 40° 50° 60° 90° 0° 20°



\*NEXUS\* 8' X 48" X 60"  
 MAGNETIC DECLINATION = 20°  
 TADPOLE DEPTH = 1984.7

TRUE DIP ANGLE AND DIRECTION HOLE ORIENT  
 0° 10° 20° 30° 40° 50° 60° 90° 0° 20°



\*NEXUS\* 8' X 48" X 60"  
 MAGNETIC DECLINATION = 20°  
 TADPOLE DEPTH = 1984.7

TRUE DIP ANGLE AND DIRECTION HOLE ORIENT  
 0° 10° 20° 30° 40° 50° 60° 90° 0° 20°

08-31-91 1988.7 68248 0089-26 0 07:29