

Schlumberger

2" BHC SONIC

Field Log

COMPANY: ARCO OIL AND GAS COMPANY

WELL: LONGVIEW FIBRE #23-25

FIELD: MIST GAS FIELD

COUNTY: COLUMBIA

STATE: OREGON

LOCATION: 3050'S & 1800' E OF THE NW CORNER T1P: 6N RGE: 5W

SEC: 25

PERMANENT DATUM: GL

ELEV. OF PERM. DATUM: 900.0 F

LOG MEASURED FROM: KB

DRLG. MEASURED FROM: KB

DATE: 7 DEC 85

RUN NO: 1

DEPTH-DRILLER: 1928.0 F

DEPTH-LOGGER: 1926.0 F

BTM. LOG INTERVAL: 1936.0 F

TOP LOG INTERVAL: 418.0 F

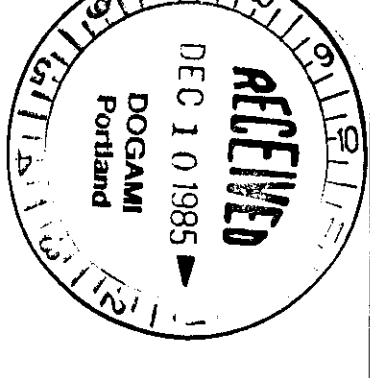
CASING-DRILLER: 417.0 F

CASING-LOGGER: 417.0 F

CASING: 9.625

WEIGHT: 8.25

BIT SIZE: 1978.0 F



OTHER SERVICES- DIL FDC-CNL-GR HDT SAT VSMS

PROGRAM TAPE NO: 28.2A SERVICE DREWER NO: 450596

TYPE FLUID IN HOLE: GEL POLYMER DENSITY: 13.10 LB/G VISCOSITY: 50.0 S PH: 9.8 FLUID LOSS: 5.2 CC SOURCE OF SAMPLE: FLOWLINE RM: 4.310 DHMM AT 62.0 DEGF RMF: 4.150 DHMM AT 47.0 DEGF RMC: 5.450 DHMM AT 52.0 DEGF SOURCE RMF/RMC: MEASURED/MEASURED RM AT BHT: 3.379 DHMM AT 81.0 DEGF RMC AT BHT: 2.547 DHMM AT 81.0 DEGF TIME CIRC. STOPPED: 06:00 12-7 TIME LOGGER ON BTM.: 16:00 12-7 MAX. REC. TEMP: 81.0 DEGF LOGGING UNIT NO: 8126 LOGGING UNIT LOC: SACRAMENTO RECORDED BY: REINING WITNESSED BY: ANDERSON

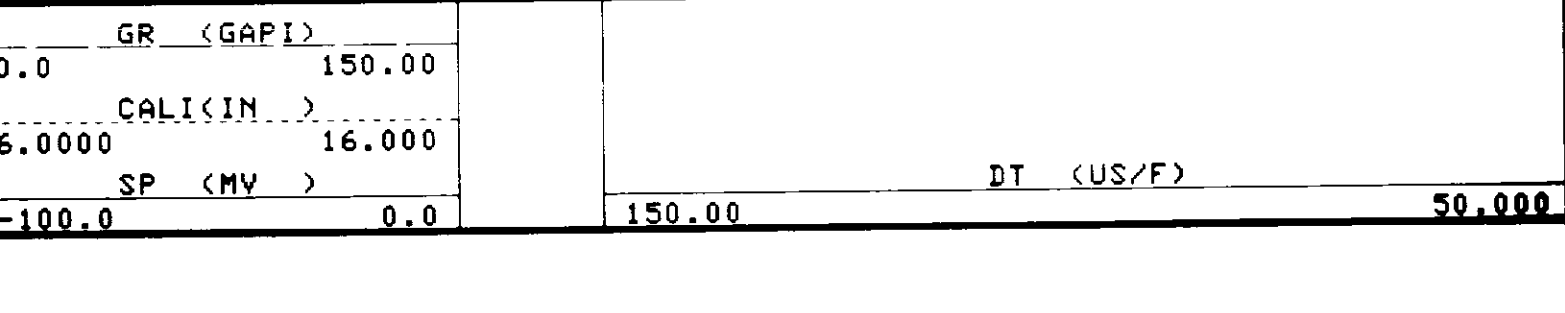
REMARKS: RUN IN COMBINATION WITH BHC-SONIC SALINITY = 800PPM CL-

EQUIPMENT NUMBERS- DIS-EC 1342 DIC-DA 1386 MCD-DA 1186 SLS-RC 1082 SLC-FA 1259 SGC-JAA 466 SLM-DA 428 NLM-BC 456

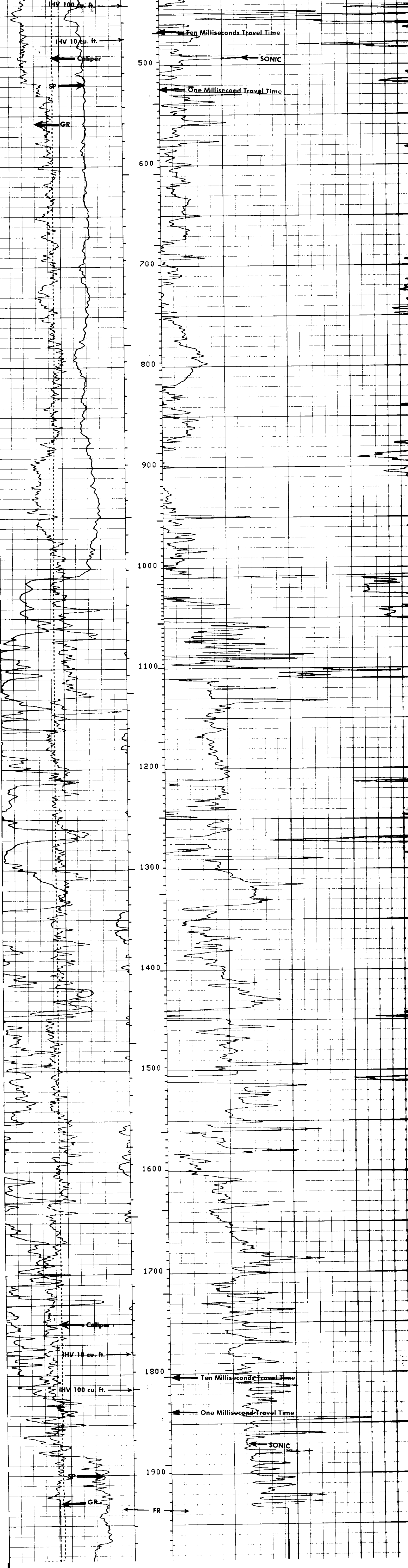
ALL INTERPRETATIONS ARE OPINIONS BASED ON INFERENCES FROM ELECTRICAL OR OTHER MEASUREMENTS AND WE CANNOT, AND DO NOT GUARANTEE THE ACCURACY OR CORRECTNESS OF ANY INTERPRETATIONS, AND WE SHALL NOT, EXCEPT IN THE CASE OF GROSS OR WILLFUL NEGLIGENCE ON OUR PART, BE LIABLE OR RESPONSIBLE FOR ANY LOSS, COSTS, DAMAGES OR EXPENSES INCURRED OR SUSTAINED BY ANYONE RESULTING FROM ANY INTERPRETATION MADE BY ANY OF OUR OFFICERS, AGENTS OR EMPLOYEES. THESE INTERPRETATIONS ARE ALSO SUBJECT TO OUR GENERAL TERMS AND CONDITIONS AS SET OUT IN OUR CURRENT PRICE SCHEDULE.

CP 28.2A FILE 102 07-DEC-85 17:28 DATA ACQUIRED 07-DEC-85 16:51

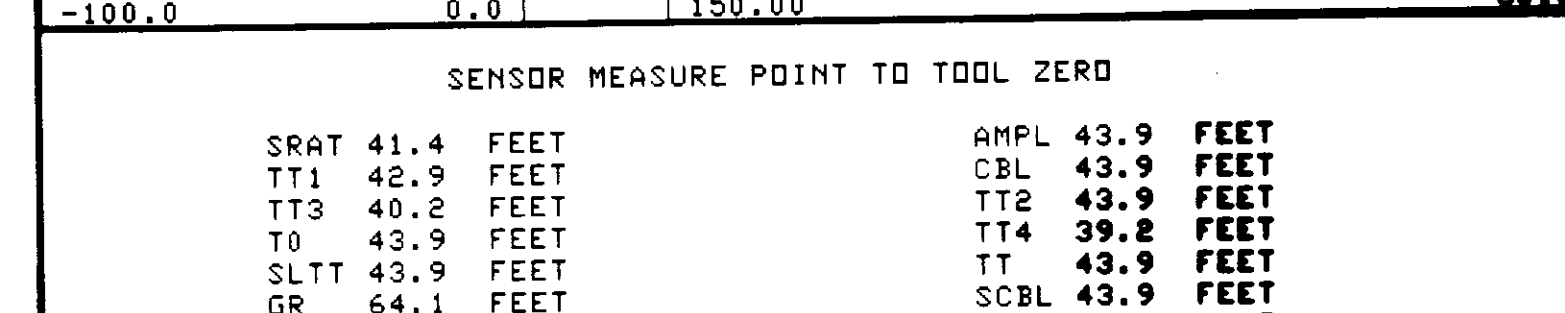
EVENT MARK SUMMARY: OUTPUT INTERVAL BETWEEN PIPS DEPTH TRACK EDGE IHV 10.00000 F3 LEFT EDGE ITT .001000000 S RIGHT EDGE



CP 28.2A FILE 101 07-DEC-85 17:21 DATA ACQUIRED 07-DEC-85 16:51



CP 28.2A FILE 101 07-DEC-85 17:17 DATA ACQUIRED 07-DEC-85 16:17



SENSOR MEASURE POINT TO TOOL ZERO table with columns for sensor name, value, and unit.

PARAMETERS table with columns for name, value, and unit.