



COMPANY: REICHHOLD ENERGY CORPORATION
 WELL: LONGVIEW FIBRE #23-36

FIELD: MIST
 COUNTY: OREGON
 STATE: OREGON

LOCATION: 2582.63 NORTH & 470.34 WEST
 SOUTH 1/4 CORNER
 SEC: 36 TWP: 6N RGE: 5W

PERMANENT DATUM: GL
 ELEV. OF PERM. DATUM: 588.0 F
 LOG MEASURED FROM: KB
 DRLG. MEASURED FROM: KB

DATE: 10 DEC 84
 RUN NO: 1

DEPTH-DRILLER: 1879.0 F
 DEPTH-LOGGER: 1876.0 F
 BITM. LOG INTERVAL: 1870.0 F
 TOP LOG INTERVAL: 353.0 F
 CASING-DRILLER: 341 F
 CASING-LOGGER: 353 F
 CASING: 8 3/8"
 BIT SIZE: 7 7/8"
 DEPTH: 1879 F

OTHER SERVICES-
 SONIC
 FDC/CNL/BR
 HDT

PROGRAM
 TAPE NO:
 SER. NO:
 SERVICE
 ORDER NO:
 432182

TYPE FLUID IN HOLE: GEL/LIGNO.
 DENSITY: 11.3 LB/G
 VISCOSITY: 53.0 S
 PH: 8.5
 FLUID LOSS: 5.4 C3
 SOURCE OF SAMPLE: FLOWLINE
 RM: 2.010 DHMM AT 60.0 DEGF
 RMC: 2.300 DHMM AT 45.0 DEGF
 RMC: 3.130 DHMM AT 45.0 DEGF
 SOURCE RMF/RMC: MEAS/MEAS
 RM AT BHT: 1.094 DHMM AT 116. DEGF
 RMC AT BHT: .972 DHMM AT 116. DEGF
 RMC AT BHT: 1.323 DHMM AT 116. DEGF

TIME CIRC. STOPPED: 15:00 12-10
 TIME LOGGER ON BTH.: 19:33 12-10

MAX. REC. TEMP: 116.0 DEGF

LOGGING UNIT NO: 8178
 LOGGING UNIT LOC: SACRAMENTO
 RECORDED BY: SUTER
 WITNESSED BY: ALGER

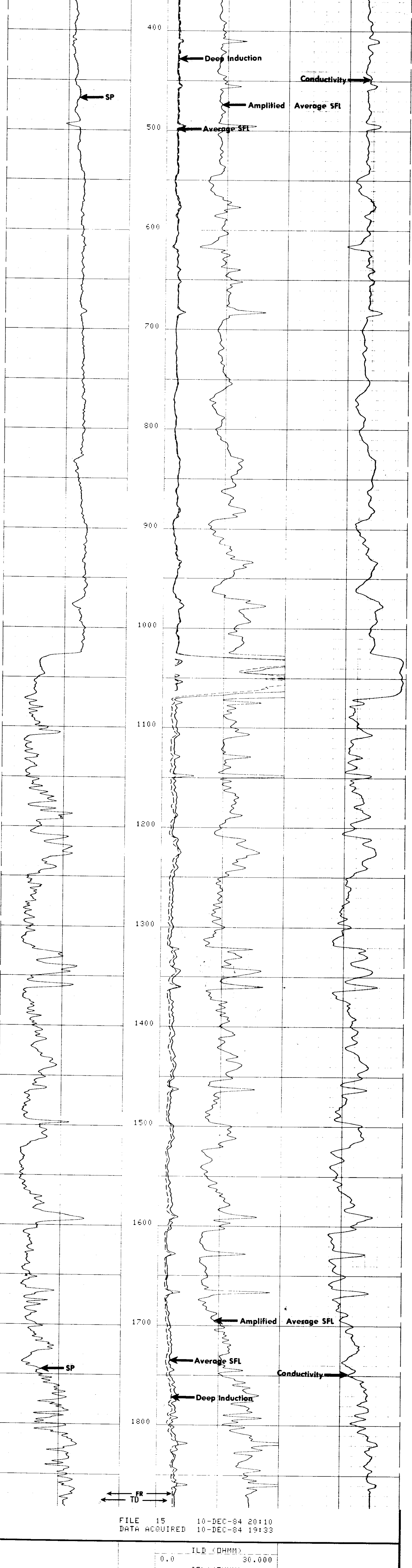
REMARKS:

EQUIPMENT NUMBERS-

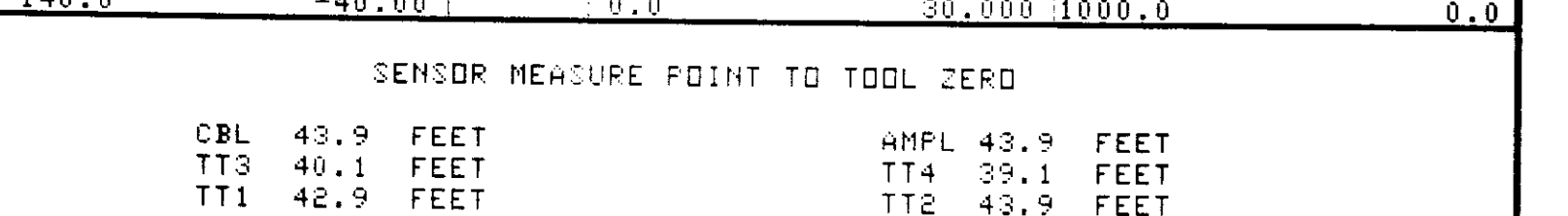
DIS 1422 DIC 1149 SLS 346 SLC 1589
 MCD 1507 IEM 686 SLM 1281

ALL INTERPRETATIONS ARE OPINIONS BASED ON INFERENCES FROM ELECTRICAL OR OTHER MEASUREMENTS AND WE CANNOT, AND DO NOT GUARANTEE THE ACCURACY OR CORRECTNESS OF ANY INTERPRETATIONS, AND WE SHALL NOT, EXCEPT IN THE CASE OF GROSS OR WILLFUL NEGLIGENCE ON OUR PART, BE LIABLE OR RESPONSIBLE FOR ANY LOSS, COSTS, DAMAGES OR EXPENSES INCURRED OR SUSTAINED BY ANYONE RESULTING FROM ANY INTERPRETATION MADE BY ANY OF OUR OFFICERS, AGENTS OR EMPLOYEES. THESE INTERPRETATIONS ARE ALSO SUBJECT TO OUR GENERAL TERMS AND CONDITIONS AS SET OUT IN OUR CURRENT PRICE SCHEDULE.

FILE 11 10-DEC-84 00:30
 DATA ACQUIRED 10-DEC-84 19:27



FILE 15 10-DEC-84 20:13
 DATA ACQUIRED 10-DEC-84 20:04



SENSOR MEASURE POINT TO TOOL ZERO

CBL 43.9 FEET	AMPL 43.9 FEET
TT3 40.1 FEET	TT4 39.1 FEET
TT1 42.9 FEET	TT2 43.9 FEET
CALI 31.8 FEET	SRAT 41.4 FEET
SFL 6.4 FEET	ILD 9.4 FEET
SP 2.5 FEET	ILM 5.7 FEET
TENS 2.5 FEET	SPAR 2.5 FEET
NOIS 35.6 FEET	

PARAMETERS

NAME	VALUE	UNIT	NAME	VALUE	UNIT
MSV1	WF1		DWE	16	
DSIN	5	US	DDEL	200	US
CDTS	100.000		INCD	512	
DTF	189.000	US/F	DTM	55.6000	US/F
SEF	1.00000	DHMM	DDEC	4.00000	MMHO
FEXP	2.00000		DDEC	5.90000	MMHO
BHS	OPEN		FR	1.00000	
DO	0.0	F	SI	2.00000	IN
FP	NOISE				