



COMPANY: REICHHOLD ENERGY CORPORATION
WELL: LONGVIEW FIBRE #23-36

FIELD: MIST
COUNTY: COLUMBIA
STATE: OREGON
LOCATION: 2582.63 NORTH & 470.34 WEST

SEC: 36 TWP: 6N RGE: 5W
PERMANENT DATUM: GL
ELEVATION: 588.0
ELEV. OF PERM. DATUM: 588.0
LOG MEASURED FROM: KB
DRLG. MEASURED FROM: KB

DATE: 11 DEC 84
RUN NO: 1

DEPTH-DRILLER: 1879.0
DEPTH-LOGGER: 1876.0
BTM. LOG INTERVAL: 1834.0
TOP LOG INTERVAL: 353.0
CASING-DRILLER: 341.0
CASING-LOGGER: 333.0
CASING: 8 5/8"
BIT SIZE: 7 7/8"
DEPTH: 1879.0

OTHER SERVICES-
DIL
FID/CNL/GR
HDT

PROGRAM
TAPE NO:
SERV. NO:
ORDER NO:
432182

TYPE FLUID IN HOLE: GEL/LIGNO
DENSITY: 11.3 LB/G
VISCOSITY: 53.0 S
PH: 8.5
FLUID LOSS: 5.4 C3
SOURCE OF SAMPLE: FLOWLINE
RM: 2.010 DHMM AT 60.0 DEGF
RMF: 2.300 DHMM AT 45.0 DEGF
RMC: 3.130 DHMM AT 45.0 DEGF
SOURCE RMF/RMC: MEAS/MEAS
RM AT BHT: 1.094 DHMM AT 116. DEGF
RMF AT BHT: 0.972 DHMM AT 116. DEGF
RMC AT BHT: 1.323 DHMM AT 116. DEGF

TIME CIRC. STOPPED: 15:00 12-10
TIME LOGGER ON BTM.: 19:33 12-10

MAX. REC. TEMP: 116.0 DEGF

LOGGING UNIT NO: 8178
LOGGING UNIT LOC: SACRAMENTO
RECORDED BY: SUTER
WITNESSED BY: ALGER

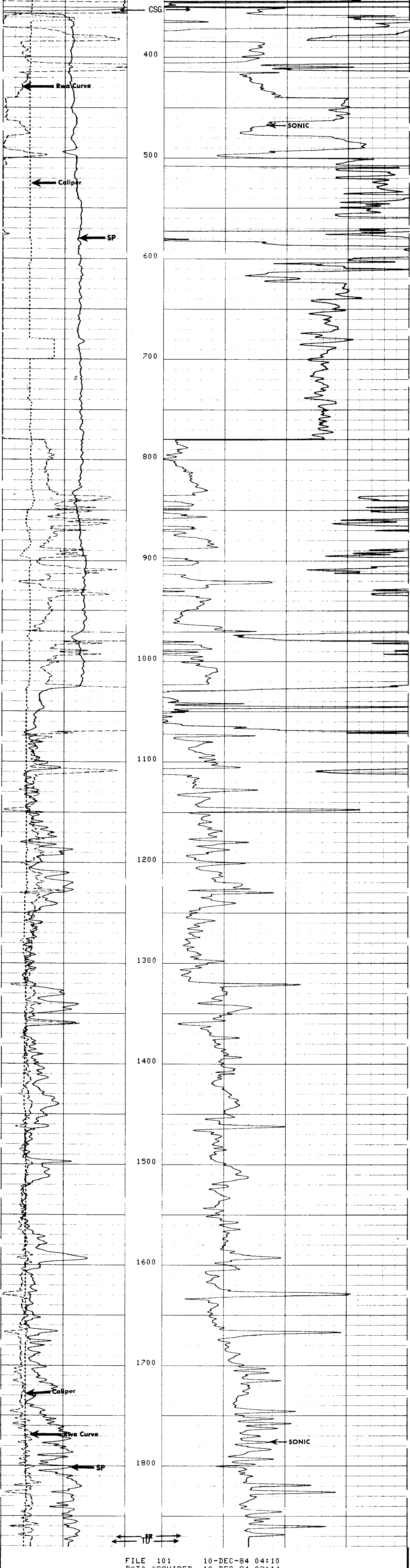
REMARKS:
SALINITY: 600 PPM CL-
CENTRALIZATION: RUBBER FINS AND CMEZS

EQUIPMENT NUMBERS-
DIS 1422 DIC 1149 SLS 346 SLC 1589
MCD 1507 IEM 686 SLM 1281

ALL INTERPRETATIONS ARE OPINIONS BASED ON INFERENCES FROM ELECTRICAL OR OTHER MEASUREMENTS AND WE CANNOT, AND DO NOT GUARANTEE THE ACCURACY OR CORRECTNESS OF ANY INTERPRETATIONS, AND WE SHALL NOT, EXCEPT IN THE CASE OF GROSS OR WILLFUL NEGLIGENCE ON OUR PART, BE LIABLE OR RESPONSIBLE FOR ANY LOSS, COSTS, DAMAGES OR EXPENSES INCURRED OR SUSTAINED BY ANYONE RESULTING FROM ANY INTERPRETATION MADE BY ANY OF OUR OFFICERS, AGENTS OR EMPLOYEES. THESE INTERPRETATIONS ARE ALSO SUBJECT TO OUR GENERAL TERMS AND CONDITIONS AS SET OUT IN OUR CURRENT PRICE SCHEDULE.

FILE 11

| | | | | |
|------------|--------|---------|-----------|---------------|
| RWA (DHMM) | 0.0 | 3.0000 | | |
| CALI (IN.) | 6.0000 | 16.0000 | | |
| SP (MV) | -140.0 | -40.00 | DT (US/F) | 150.00 50.000 |



| | | | | |
|------------|--------|---------|-----------|---------------|
| RWA (DHMM) | 0.0 | 3.0000 | | |
| CALI (IN.) | 6.0000 | 16.0000 | | |
| SP (MV) | -140.0 | -40.00 | DT (US/F) | 150.00 50.000 |

SENSOR MEASURE POINT TO TOOL ZERO

| | |
|----------------|----------------|
| CBL 43.9 FEET | AMPL 43.9 FEET |
| TT3 40.1 FEET | TT4 39.1 FEET |
| TT1 42.9 FEET | TT2 43.9 FEET |
| CALI 31.8 FEET | SRAT 41.4 FEET |
| SFL 6.4 FEET | ILD 9.4 FEET |
| SP 2.5 FEET | ILM 5.7 FEET |
| TENS 3.5 FEET | SPAR 2.5 FEET |
| NDIS 35.6 FEET | |

PARAMETERS

| NAME | VALUE | UNIT | NAME | VALUE | UNIT |
|------|---------|------|------|---------|------|
| MSV1 | WF1 | | DWS | 16 | |
| DSIN | 5 | US | DDEL | 200 | US |
| CDTS | 100.000 | | DWCD | 512 | |
| DTF | 189.000 | US/F | DTM | 55.6000 | US/F |
| SBR | 1.00000 | DHMM | DSEC | 4.50000 | MMHO |
| FPHI | SPHI | | MSEC | 6.80000 | MMHO |
| FNUM | 1.00000 | | FEXP | 2.00000 | |
| BS | 7.87500 | IN | BHS | OPEN | |
| DD | 0.0 | F | DD2 | 0.0 | F |
| PP | RECD | | | | |

TAPE NOT MADE