



WELL LOGGING, INC.

COMPANY ARCO OIL AND GAS CO.

WELL LF # 24-6-75 RD #1

FIELD MIST

LOCATION 1155' and 93' W from the SE corner of Sec. 8, T7N, R9W

COUNTY, STATE Columbia, Oregon

API WELL INDEX NO.

ELEVATION 731' G.L. 74' K.E.

DATES FROM 10-28-88 TO 10-31-88

DEPTHS FROM 900' K.E. TO 3035' K.E.

SPUD DATE 10-28-88

DRILLING CONTRACTOR Paul Graham Rig #4

MUD COMPANY Barford

LOGGING GEOLOGISTS John Jay Jim Estes

ABBREVIATIONS table with columns for bit types, mud weight, viscosity, yield point, fluid loss, PPM, mud resistivity, filtrate resistivity, logged after trip, no returns, pump pressure, mud type.

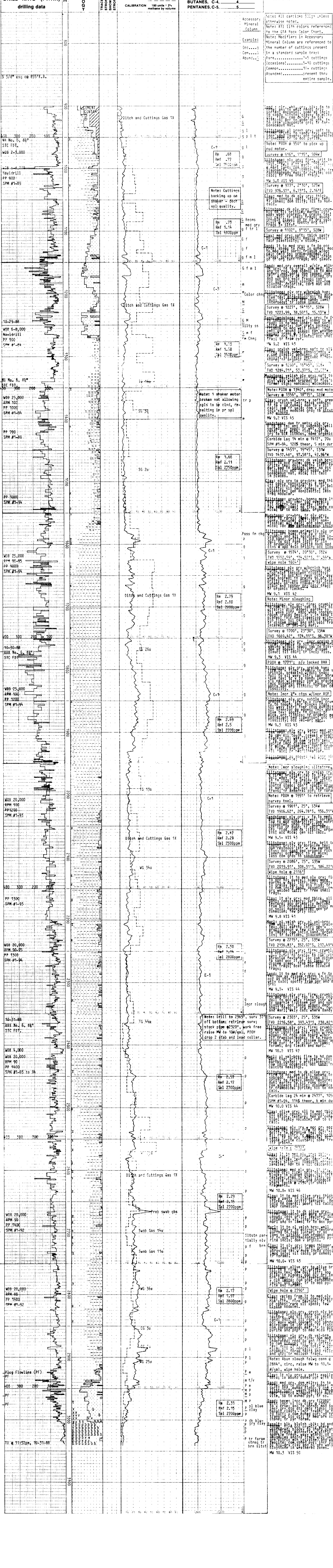
CASING RECORD table with columns for size, type, weight, length.

HOLE SIZE table with columns for size, type, weight, length.

Legend for lithology symbols: SAND/SANDSTONE, SHALE, SILTSTONE, CLAY, MUDSTONE, CONGLOMERATE, LIMESTONE, VOLCANIC, BASALT, TUFF, FOSSIL, MICA, LIGNITE, GLAUCONITE, PYRITE.

OIL BASED ON LIVE OIL IN UNWASHED CUTTINGS AND PERCENT STAINING AND FLUORESCENCE OF WASHED SAMPLES.

PENETRATION ANALYSIS OF RETURNS REMARKS



Notes and additional remarks at the bottom of the log, including survey data and lithological descriptions.