



2" = 100'

**DUAL INDUCTION  
GUARD LOG**

WITH 2" LINEAR CORRELATION LOG

COMPANY REICHHOLD ENERGY CORPORATION  
WELL LONGVIEW FIBER NO. 24-12  
FIELD MIST NEHALEM BASIN  
County COLUMBIA State CALIF.

COMPANY REICHHOLD ENERGY CORPORATION  
WELL LONGVIEW FIBER NO. 24-12  
FIELD MIST NEHALEM BASIN

Location NORTH & 729' WEST FROM THE C/A/VL  
SOUTH 1/4 CORNER OF E  
COUNTY COLUMBIA STATE OREGON

Sec. 12 Twp. 6N Rge. 5W  
Elev. 629.69  
Elev. KB 640.19  
Elev. GL 629.69

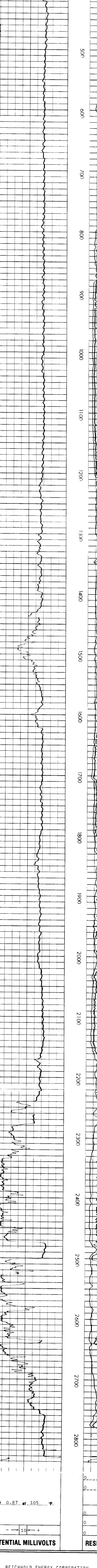
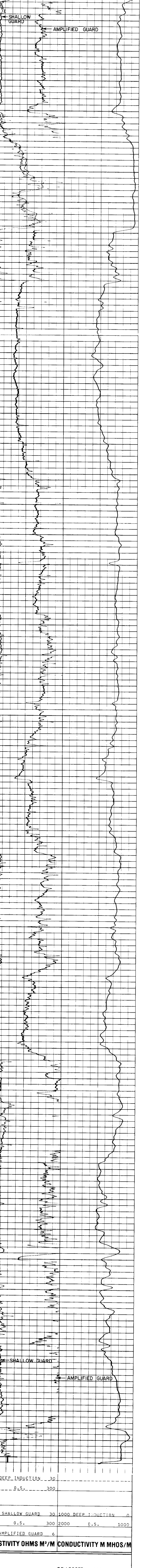
Permanent Datum K.B. DR 10.5 Ft. Above Perm. Datum  
Log Measured From K.B. D.F.  
Drilling Measured From K.B.

Date 8-16-80  
Run No. ONE  
Depth-Driller 2839  
Btm. Log Inter. 2830  
Tpp. Log Inter. 400  
Casing-Driller 7 @ 404  
Casing-Welex 404  
Btt Size 6 1/4

Type Fluid in Hole		LINDSULF.	
Dens. @ 75° F	1.38-42		
pH @ 75° F	9.7		
Source of Fluid Loss	CIRCULATED		
R <sub>m</sub> @ Meas. Temp.	1.45 @ 67° F		
R <sub>m</sub> @ Meas. Temp.	1.40 @ 76° F		
R <sub>m</sub> @ Meas. Temp.	1.70 @ 78° F		
Source R <sub>m</sub>	MEASURED		
R <sub>m</sub> @ BHT	0.92 @ 105° F		
Time Since Circ.	1 HRS.		
Max. Hct. Temp.	105° F @ BHT		
Equip. Location	2876 LINDLAND		
Witnessed By	J. PARLEE		
	W. BRUER		

Change in Mud Type or Additional Samples		SCALE CHANGES	
Date	Sample No.	Type Log	Depth
Type Fluid in Hole		Scale Up Hole	Scale Down Hole
Dens.	Visc.		
ph	Fluid Loss		
Source of Sample		EQUIPMENT DATA	
R <sub>m</sub> @ Meas. Temp.		Run No.	Tool Type and No.
R <sub>m</sub> @ Meas. Temp.		ONE	DIG 20586
R <sub>m</sub> @ Meas. Temp.			Pad Type
Source R <sub>m</sub>			Tool Position
R <sub>m</sub> @ BHT			S. 0, 1, 1/2
R <sub>m</sub> BHT			
R <sub>m</sub> BHT			

We do not guarantee the accuracy of any interpretation of log data. Any use of such data interpretations for purposes or recommendations which may be detrimental to persons or property is at their own risk. We are not responsible for any loss, damage, or expense resulting from the use thereof.



REICHHOLD ENERGY CORPORATION  
LONGVIEW FIBER NO. 24-12  
MIST NEHALEM BASIN  
COLUMBIA COUNTY, OREGON

T.D. LOGGED 2830  
T.D. DRILLER 2839  
T.D. WELEX 2832  
ELEV: KB 640.19 GL 629.69

