

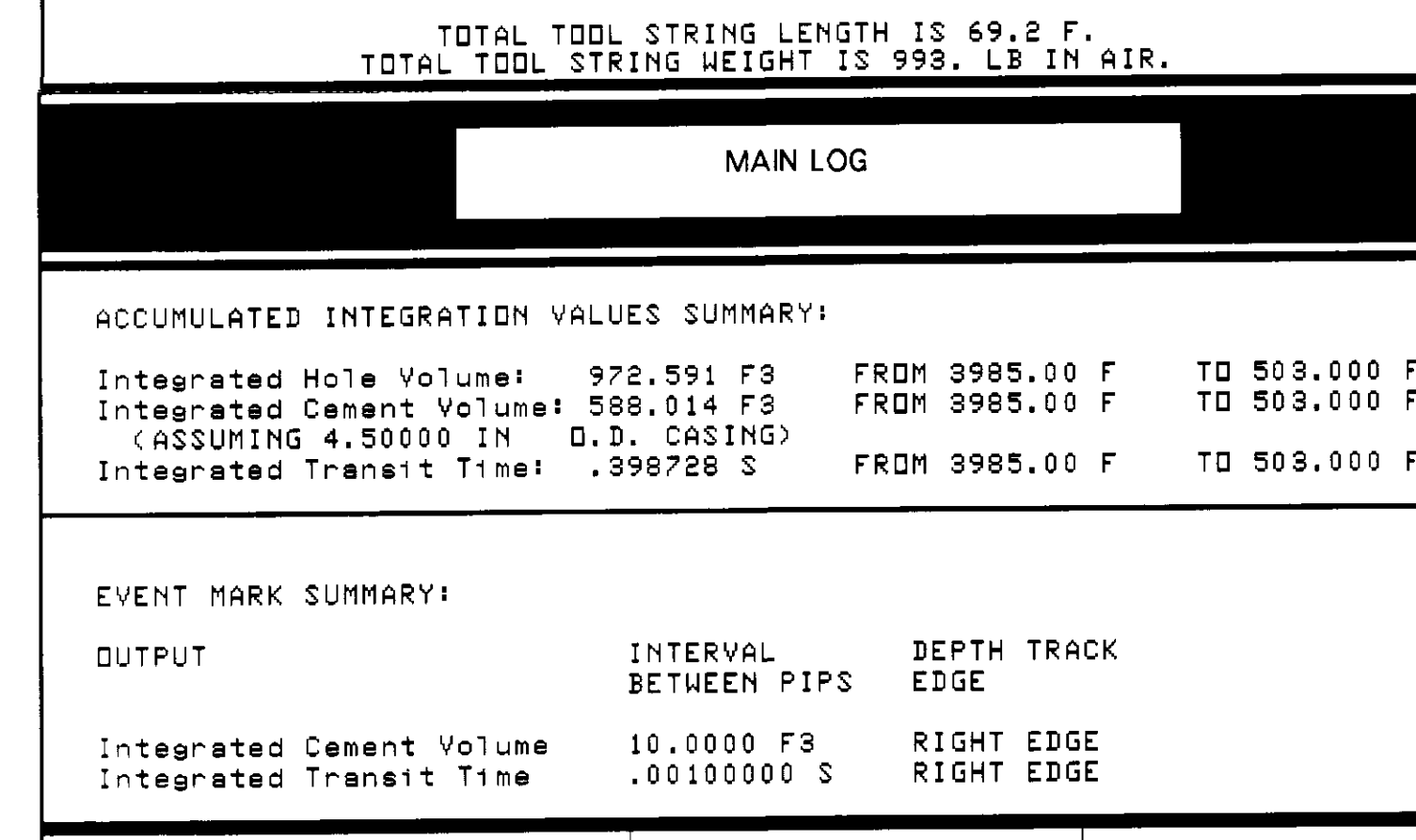
COMPANY NAHAMMA & WEAGANT
 WELL KING LF #31-36-65
 FIELD MIST
 COUNTY COLUMBIA STATE OREGON
 COUNTY NAHAMMA & WEAGANT
 LOCATION 2400 W & 89th
 TWP. 14 N. R. 31 E. S. 36
 SECTION 36
 COMMENTS: 36000
 DATE 03-AUG-93
 DRILLING MEASURED FROM 00
 LOG MEASURED FROM 00
 ABOVE FROM: 00
 Q.L. 754.5 F

The well name, location and borehole reference data were furnished by the customer.
 All interpretations are opinions based on information from electrical or other measurements and we cannot, and do not guarantee the accuracy or correctness of any interpretations, and we shall not, except in the case of gross or willful negligence or our part, be liable or responsible for any loss, costs, damages or expenses incurred or sustained by anyone resulting from any interpretations made by any of our officers, agents or employees. These interpretations are also subject to Clause 4 of our General Terms and Conditions as set out in our current Price Schedule.

Run No	ONE
Service Order No	624492
Drilling Fluid Level	7000 PPM
Safety	2080 OHMM @ 100 DEGF
Rmt @ BHT	2019 OHMM @ 100 DEGF
Rmc @ BHT	38000 F/HR
Logging Speed	

EQUIPMENT DATA	
Tool Number 1	DIC-EC 1432
Tool Number 2	DIC-DA 1148
Tool Number 3	MCD-DA 668
Tool Number 4	SLC-MA '86
Tool Number 5	SLS-WA 389
Tool Number 6	SGT-E 3206
Tool Number 7	EM-BD 886
Tool Number 8	SLM-DA 1929
Tool Number 9	NLM-BC 456
Tool Number 10	
Tool Number 11	
Tool Number 12	

REMARKS: ANOMALIES IN SFL NOT REPEATED AS REPEAT PERFORMED FROM 7260-1060 FT AS PER CLIENT REQUEST.



TOTAL TOOL STRING LENGTH IS 69.2 F.
 TOTAL TOOL STRING HEIGHT IS 999. LB IN AIR.

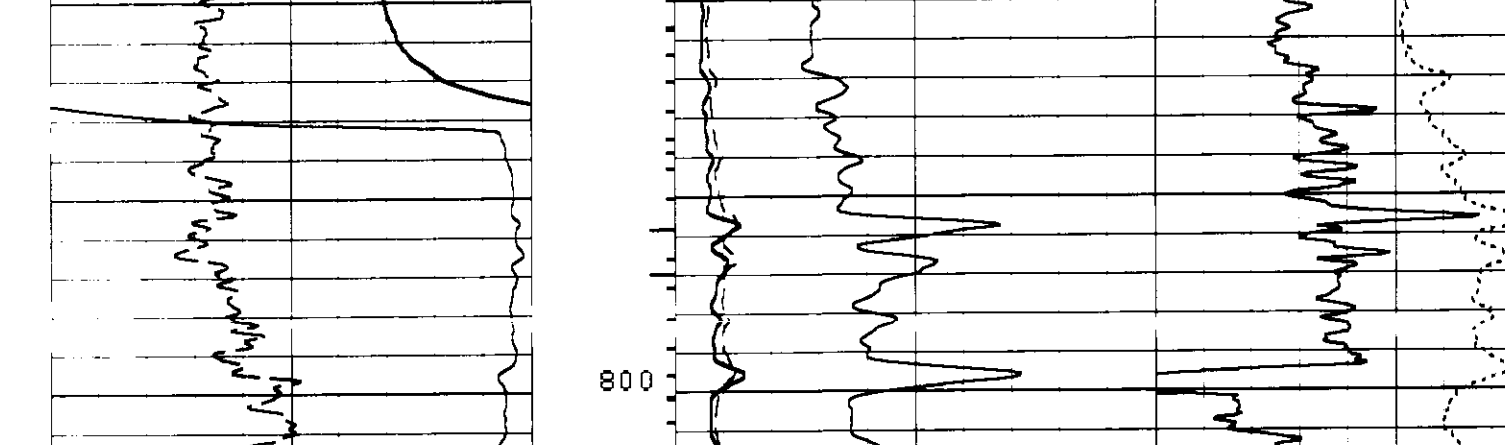
MAIN LOG

ACCUMULATED INTEGRATION VALUES SUMMARY:

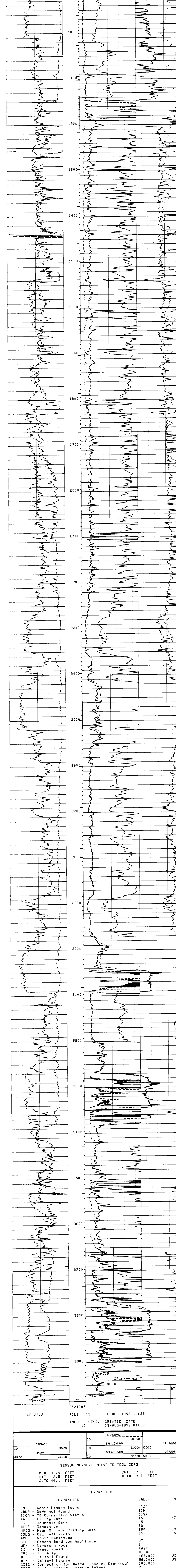
Integrated Hole Volume	972.591 F3	FROM 3985.00 F	TO 503.000 F
Integrated Cement Volume	599.014 F3	FROM 3985.00 F	TO 503.000 F
(ASSUMING 4.50000 IN D.D. CASING)			
Integrated Transit Time	.398728 S	FROM 3985.00 F	TO 503.000 F

EVENT MARK SUMMARY:

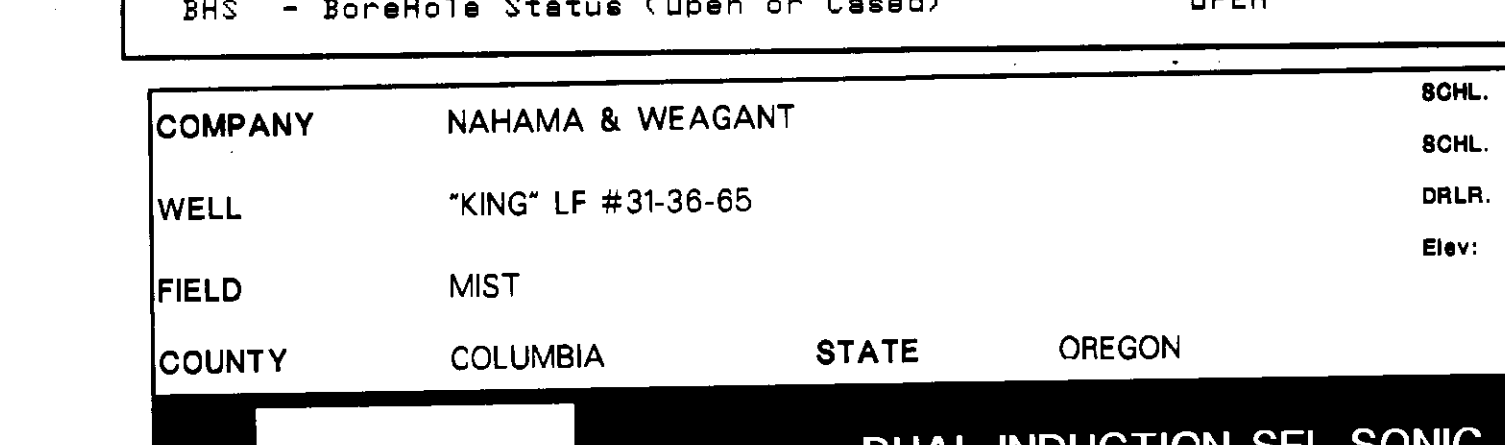
OUTPUT	INTERVAL BETWEEN PIPS	DEPTH TRACK EDGE
Integrated Cement Volume	10.0000 F3	RIGHT EDGE
Integrated Transit Time	.00100000 S	RIGHT EDGE



CP 38.2 FILE 15 03-AUG-1993 14193
 INPUT FILE(S) 10 CREATION DATE 03-AUG-1993 01192



CP 38.2 FILE 15 03-AUG-1993 14125
 INPUT FILE(S) 10 CREATION DATE 03-AUG-1993 01192



SENSOR MEASURE POINT TO TOOL ZERO

MCD 31.9 FEET	SGTE 62.7 FEET
DTT 2.5 FEET	DITD 9.9 FEET
SLTO 44.1 FEET	

PARAMETERS

PARAMETER	VALUE	UNIT
SMB - Sonic Memory Board	DISA	
VDR - Gain not found	DISA	
TOCA - TO Connection Status	DISA	
RATE - Firing Rate	15	HZ
DG - Downhole Gain	ER	
DET - Detection	180	US
NMSG - Near Minimum Sliding Gate	35	US
CBLG - CBL Gate Width	2	
AMPL - Sonic Amplitude	UT	
CBL - Cement Bond Log Amplitude	FAST	
HFM - Levator Mode	DISA	
SS - Sweep Speed	109.000	US/F
TOD - TO Delay	100.000	US/F
DTF - Delta-T Fluid	55.0000	
VDR - Delta-T Matrix	10.0000	
CDTS - Correction for Delta-T Shale, Empirical	100.000	
SPFS - Sonic Porosity Formula Select	NDRM	
PP - Playback Processing	0.0	
DD - Depth Offset for Local Unit L11	10.2000	LB/G
HWUD - Weight of Mud	7.50000	MM/M
MSEC - Medium Sonde Error Correction	1.00000	MM/M
MSR - Shoulder Bed Resistivity	4.40000	MM/M
DSEC - Deep Sonde Error Correction	4.50000	IN
FBC - Future Casing Diameter	GSRY	
NCUT - NGT Calibration Jig Type	SPHI	
FPHI - Formation Factor Formula Porosity	518	US
DHCD - Digitizer Word Count	0	US
DSIN - Digitizer Sample Interval	100	US
BDL - Digitizing Delay	7.87500	IN
BS - Bit Size	DPEN	
BHS - Borehole Statue (Open or Cased)		

COMPANY NAHAMMA & WEAGANT
 WELL "KING" LF #31-36-65
 FIELD MIST
 COUNTY COLUMBIA STATE OREGON

80HL FR 3979.0 F
 DRLR TD 3987.0 F
 Elev: KB 764.5 F
 DF 763.5 F
 QL 754.5 F