



DIP LOG CALCULATIONS

COMPANY: HEICHHOLD ENERGY CORPORATION
WELL: LONG VIEW FIBER 41-32
FIELD: MIST
COUNTY: COLUMBIA STATE: OREGON
DATE: DEC 21 1981
DIP LOG CALCULATIONS

Service Ticket No. 054969

Date	Sample No.	Type	Remarks

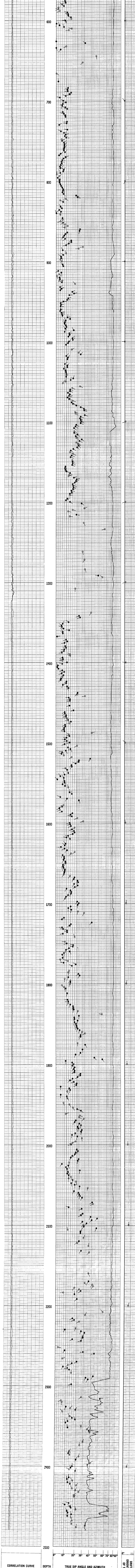
Magnetic Declination: NORTH 21.5 EAST

TABLE OF CONSTANTS FOR DETERMINING VERTICAL DIFFERENCE AT VARIOUS DIP ANGLES

DIP ANGLES (Degrees)	CONSTANT	DIP ANGLES (Degrees)	CONSTANT	DIP ANGLES (Degrees)	CONSTANT	DIP ANGLES (Degrees)	CONSTANT
1	.0175	11	.194	21	.384	35	.700
2	.035	12	.231	22	.404	40	.839
3	.052	13	.249	23	.425	45	1.000
4	.070	14	.268	24	.445	50	1.192
5	.088	15	.287	25	.466	55	1.428
6	.105	16	.306	26	.487	60	1.732
7	.123	17	.326	27	.509	65	2.144
8	.141	18	.344	28	.531	70	2.748
9	.158	19	.364	29	.554	75	3.732
10	.176	20	.384	30	.577	80	5.671

Vertical difference in feet is obtained by multiplying the constant for any given dip angle by the horizontal distance in feet.
Example: Dip angle 10'; Horizontal distance 440 ft.
Vertical difference = .176 x 440 = 77.44

GRAPHIC PRESENTATION



COMPANY: HEICHHOLD ENERGY CORPORATION
WELL: LONG VIEW FIBER 41-32
FIELD: MIST
COUNTY: COLUMBIA STATE: OREGON

T.D. LOGGED: 2485
T.D. DRILLER: 2484
T.D. WELLY: 2487
ELEV.: K.B. 870.3
D.F.: 858.9
G.L.: