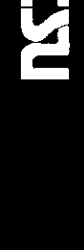


Schlumberger

2" DUAL INDUCTION-SFL



COMPANY: REICHHOLD ENERGY CORPORATION
WELL: "LONGVIEW-FIBER" #42-22

FIELD: SOUTH WEST
COUNTY: COLUMBIA
STATE: OREGON
LOCATION: U.S.A.
LOCATION: SEE REMARKS SECTION

SEC: 22 TWP: 6N RGE: 5W
PERMANENT DATUM: GL
ELEV. OF PERM. DATUM: 755.0 F
LOG MEASURED FROM: KB
11.4 F ABOVE PERM. DATUM
DRLG. MEASURED FROM: KB

DATE: 16 JAN 85
RUN NO: 1
DEPTH-DRILLER: 2278.0 F
DEPTH-LOGGER: 2272.0 F
BTM LOG INTERVAL: 2266.0 F
TOP LOG INTERVAL: 438.0 F
CASING-DRILLER: 437 F
CASING-LOGGER: 438 F
CASING: 8 5/8"
BIT SIZE: 7 7/8"
DEPTH: 2278 F

RECEIVED - P11D
FEB 7 1985
DEPT OF GEOLOGY
SACRAMENTO
CALIFORNIA

OTHER SERVICES-
BHC
HBT

PROGRAM
TAPE NO:
SERV NO:
SERVICE
ORDER NO:
432404

TYPE FLUID IN HOLE: GEL-LIGNO
DENSITY: 10.6 LB/G
VISCOSITY: 45.0 S
PH: 8.5
FLUID LOSS: 5.6 C3
SOURCE OF SAMPLE: FLOWLINE
RM: 2.850 DHMM AT 63.0 DEGF
RMF: 2.330 DHMM AT 47.0 DEGF
RMC: 2.690 DHMM AT 47.0 DEGF
SOURCE RMF/RMC: MEASURED/MEASURED
RM AT BHT: 2.145 DHMM AT 86.0 DEGF
RMF AT BHT: 1.352 DHMM AT 86.0 DEGF
RMC AT BHT: 1.561 DHMM AT 86.0 DEGF
TIME CIRC. STOPPED: 15:30 1-16
TIME LOGGER ON BTM.: 18:45 1-16
MAX. REC. TEMP: 86.0 DEGF
LOGGING UNIT NO: 8126
LOGGING UNIT LOC: SACRAMENTO
RECORDED BY: PILCH
WITNESSED BY: THOMAS

REMARKS:
500 PPM CHLORIDES
DUAL AND SONIC RAN IN COMBINATION.
NORTH 89 DEG 4' 19" WEST 562.82 FT & NORTH
0 DEG 55' 41" EAST 260.54 FT FROM EAST 1/4 CORNER
CALIPER POSSIBLY JAMMED WITH CUTTINGS.

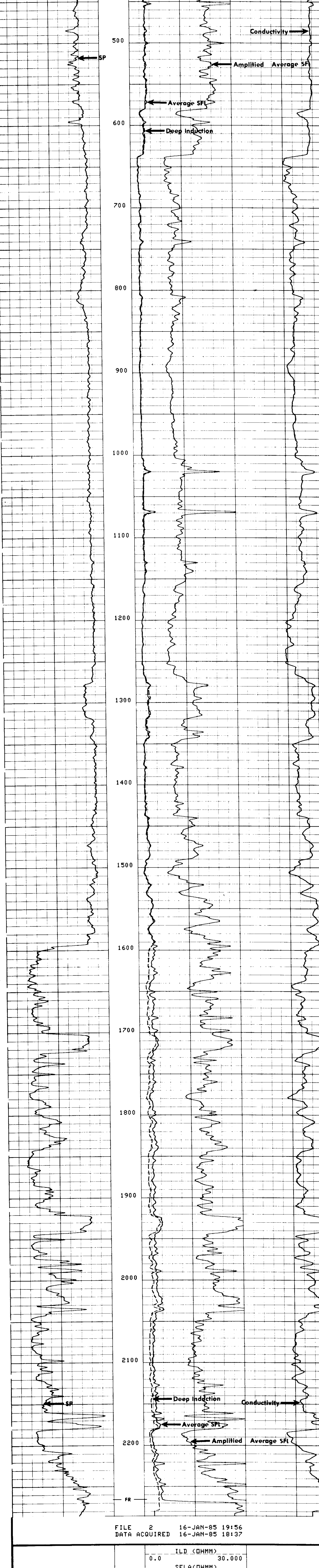
EQUIPMENT NUMBERS-
DIS-EC 1342 DIC-DA 1386 MCD-DA 370 SLS-RC 525
SLC-FA 1468 IEM-BD 162 SLM-DA 433

ALL INTERPRETATIONS ARE OPINIONS BASED ON INFERENCES FROM ELECTRICAL OR
OTHER MEASUREMENTS AND WE CANNOT, AND DO NOT GUARANTEE THE ACCURACY OR
CORRECTNESS OF ANY INTERPRETATIONS, AND WE SHALL NOT, EXCEPT IN THE CASE
OF GROSS OR WILLFUL NEGLIGENCE ON OUR PART, BE LIABLE OR RESPONSIBLE FOR
ANY LOSS, COSTS, DAMAGES OR EXPENSES INCURRED OR SUSTAINED BY ANYONE
RESULTING FROM ANY INTERPRETATION MADE BY ANY OF OUR OFFICERS, AGENTS OR
EMPLOYEES. THESE INTERPRETATIONS ARE ALSO SUBJECT TO OUR GENERAL TERMS
AND CONDITIONS AS SET OUT IN OUR CURRENT PRICE SCHEDULE.

FILE 102 16-JAN-85 19:25
DATA ACQUIRED 16-JAN-85 18:48

SP (MV)	-100.0	0.0	ILD (DHMM)	0.0	30.000	CILD(MMHO)	0.0
			SFLA(DHMM)	0.0	6.0000		
			SFLA(DHMM)	0.0	30.0000		

FILE 3 16-JAN-85 19:59
DATA ACQUIRED 16-JAN-85 19:13



FILE 2 16-JAN-85 19:56
DATA ACQUIRED 16-JAN-85 18:37

SP (MV)	-100.0	0.0	ILD (DHMM)	0.0	30.000	CILD(MMHO)	0.0
			SFLA(DHMM)	0.0	6.0000		
			SFLA(DHMM)	0.0	30.0000		

SENSOR MEASURE POINT TO TOOL ZERO

CBL 43.9 FEET	AMPL 43.9 FEET
TT3 40.1 FEET	TT4 39.1 FEET
TT1 42.9 FEET	TT2 43.9 FEET
CALI 31.8 FEET	SRAT 41.4 FEET
SFL 6.4 FEET	ILD 9.4 FEET
SP 2.5 FEET	ILM 5.7 FEET
TENS 2.5 FEET	SPAR 2.5 FEET
NOIS 35.6 FEET	

PARAMETERS

NAME	VALUE	UNIT	NAME	VALUE	UNIT
WSV1	WF1		DWS	16	
DSIN	5	US	DDEL	200	US
CDTS	100.000		DWCO	512	
DTF	189.000	US/F	DTH	56.0000	US/F
SBR	1.00000	DHMM	DSEC	5.00000	MMHO
SPHI	SPHI		MSEC	1.00000	MMHO
BS	7.87500	IN	BHS	OPEN	
PP	NDRM		DO	0.0	F

TAPE NOT MADE