

COMPANY: REICHHOLD ENERGY CORPORATION
 WELL: "LONGVIEW-FIBER" #42-22

FIELD: SOUTH MIST
 COUNTY: COLUMBIA
 STATE: OREGON
 NATION: U.S.A.
 LOCATION: SEE REMARKS SECTION

SEC: 22 TWP: 6N RGE: 5M
 PERMANENT DATUM: GL ELEVATIONS-
 ELEV. OF PERM. DATUM: 255.0 F KRI: 766.4 F
 LOG MEASURED FROM: KB DF: 765.4 F
 11.4 F ABOVE PERM. DATUM GL: 755.0 F
 DRG. MEASURED FROM: KB

DATE: 16 JAN 85
 RUN NO: 1

DEPTH-DRILLER: 2278.0 F
 DEPTH-LOGGER: 2278.0 F
 BTM LOG INTERVAL: 2230.0 F
 TOP LOG INTERVAL: 438.0 F
 CASING-DRILLER: 437 F
 CASING-LOGGER: 438 F
 CASING: 8 5/8"
 BIT SIZE: 7 7/8"
 BIT DEPTH: 2278 F

OTHER SERVICES-
 DIL
 HDT

PROGRAM
 TAPE NO:
 SERVICE
 ORDER NO:
 432404

RECEIVED - PILD
 FEB 7 1985
 DEPT. OF GEOLOGY
 SACRAMENTO, CALIF.

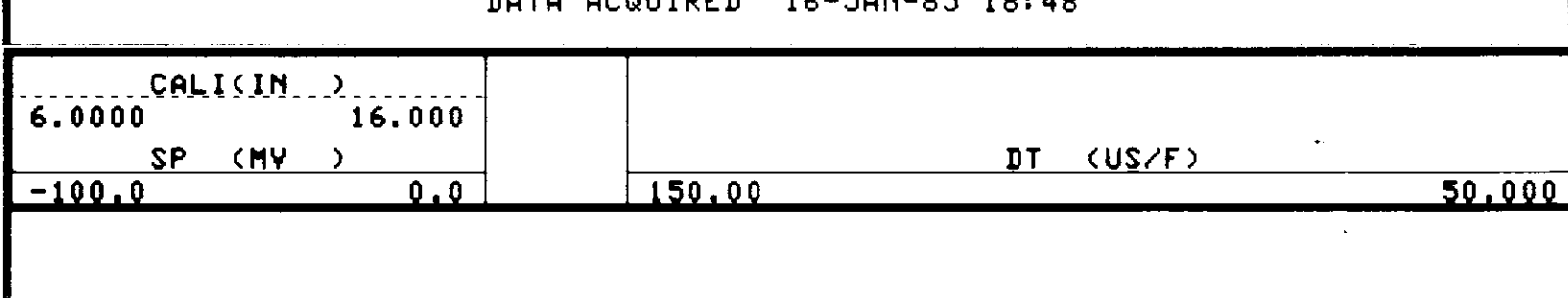
TYPE FLUID IN HOLE: GEL-LIGNO
 DENSITY: 10.6 LB/G
 VISCOSITY: 45.0 S
 PH: 8.5
 FLUID LOSS: 5.6 C3
 SOURCE OF SAMPLE: FLOWLINE
 RM: 2.850 DHMM AT 63.0 DEGF
 RMF: 2.330 DHMM AT 47.0 DEGF
 RMC: 2.690 DHMM AT 47.0 DEGF
 SOURCE RMF/RMC: MEASURED/MEASURED
 RM AT BHT: 2.145 DHMM AT 86.0 DEGF
 RMF AT BHT: 1.352 DHMM AT 86.0 DEGF
 RMC AT BHT: 1.561 DHMM AT 86.0 DEGF
 TIME CIRC. STOPPED: 15:30 1-16
 TIME LOGGER ON BTM.: 18:45 1-16
 MAX. REC. TEMP: 86.0 DEGF
 LOGGING UNIT NO: 8126
 LOGGING UNIT LOC: SACRAMENTO
 RECORDED BY: PILCH
 WITNESSED BY: THOMAS

REMARKS:
 500 PPM CHLORIDES
 DUAL AND SONIC RAN IN COMBINATION.
 NORTH 89 DEG 4' 19" WEST 562.82 FT & NORTH
 0 DEG 55' 41" EAST 260.54 FT FROM EAST 1/4 CORNER
 CALIPER POSSIBLY JAMMED WITH CUTTINGS.

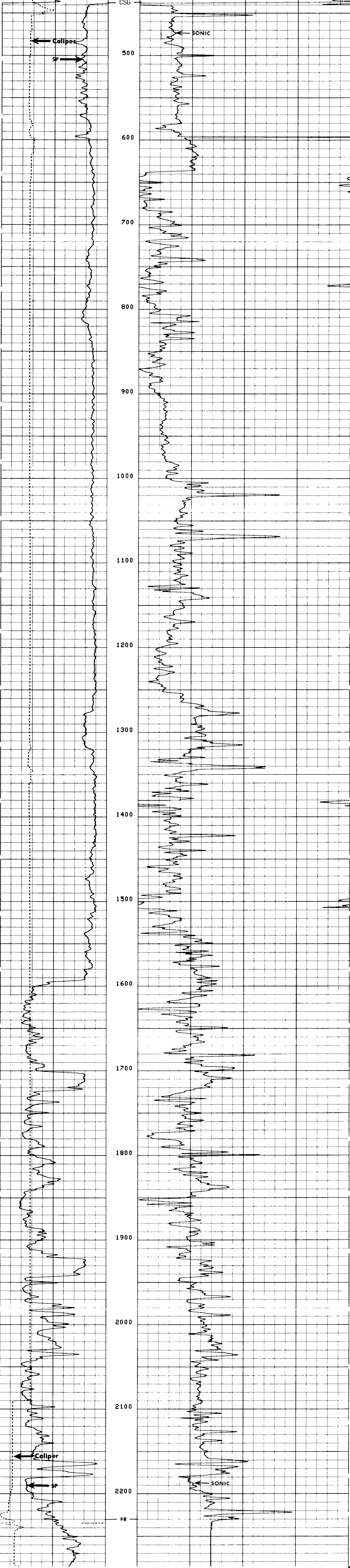
EQUIPMENT NUMBERS-
 DIS-EC 1342 DIC-DA 1386 MCD-DA 370 SLS-RC 525
 SLC-FA 1468 IEM-BD 162 SLM-DA 433

ALL INTERPRETATIONS ARE OPINIONS BASED ON INFERENCES FROM ELECTRICAL OR
 OTHER MEASUREMENTS AND WE CANNOT, AND DO NOT GUARANTEE THE ACCURACY OR
 CORRECTNESS OF ANY INTERPRETATIONS, AND WE SHALL NOT, EXCEPT IN THE CASE
 OF GROSS OR WILLFUL NEGLIGENCE ON OUR PART, BE LIABLE OR RESPONSIBLE FOR
 ANY LOSS, COSTS, DAMAGES OR EXPENSES INCURRED OR SUSTAINED BY ANYONE
 RESULTING FROM ANY INTERPRETATION MADE BY ANY OF OUR OFFICERS, AGENTS OR
 EMPLOYEES. THESE INTERPRETATIONS ARE ALSO SUBJECT TO OUR GENERAL TERMS
 AND CONDITIONS AS SET OUT IN OUR CURRENT PRICE SCHEDULE.

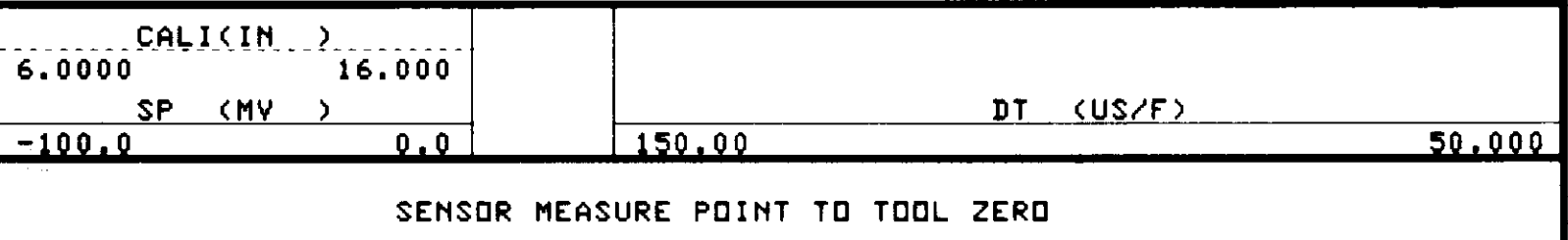
FILE 102 16-JAN-85 19:24
 DATA ACQUIRED 16-JAN-85 18:48



FILE 3 16-JAN-85 19:59
 DATA ACQUIRED 16-JAN-85 19:13



FILE 2 16-JAN-85 19:56
 DATA ACQUIRED 16-JAN-85 18:37



SENSOR MEASURE POINT TO TOOL ZERO

CBL	43.9	FEET	AMPL	43.9	FEET
TT3	40.1	FEET	TT4	39.1	FEET
TT1	42.9	FEET	TT2	43.9	FEET
CALI	31.8	FEET	SRAT	41.4	FEET
SFL	6.4	FEET	ILD	9.4	FEET
SP	2.5	FEET	ILM	5.7	FEET
TENS	2.5	FEET	SPAR	2.5	FEET
NDIS	35.6	FEET			

PARAMETERS

NAME	VALUE	UNIT	NAME	VALUE	UNIT
HSV1	HF1		DWS	16	
DSIN	5	US	DDEL	200	US
CDTS	100.0000		DHCO	512	
DTF	189.0000	US/F	DTM	56.0000	US/F
SBR	1.000000	DHMM	DSEC	5.000000	MMHD
FPHI	SPHI		MSEC	1.000000	
BS	7.87500	IN	BHS	OPEN	
PP	NORM		DD	0.0	F

TAPE NOT MADE