

COMPANY NAHAMA & WEAGANT ENERGY COMPANY
 WELL "CONDOR" L.F. #43-32-65
 FIELD MIST
 COUNTY COLUMBIA STATE OREGON
 LOCATION 287174 AND 200744
 FROM SE CORNER
 PERMITS 36-000-00002
 C-6
 32
 37
 40
 43
 46
 49
 52
 55
 58
 61
 64
 67
 70
 73
 76
 79
 82
 85
 88
 91
 94
 97
 100
 103
 106
 109
 112
 115
 118
 121
 124
 127
 130
 133
 136
 139
 142
 145
 148
 151
 154
 157
 160
 163
 166
 169
 172
 175
 178
 181
 184
 187
 190
 193
 196
 199
 202
 205
 208
 211
 214
 217
 220
 223
 226
 229
 232
 235
 238
 241
 244
 247
 250
 253
 256
 259
 262
 265
 268
 271
 274
 277
 280
 283
 286
 289
 292
 295
 298
 301
 304
 307
 310
 313
 316
 319
 322
 325
 328
 331
 334
 337
 340
 343
 346
 349
 352
 355
 358
 361
 364
 367
 370
 373
 376
 379
 382
 385
 388
 391
 394
 397
 400
 403
 406
 409
 412
 415
 418
 421
 424
 427
 430
 433
 436
 439
 442
 445
 448
 451
 454
 457
 460
 463
 466
 469
 472
 475
 478
 481
 484
 487
 490
 493
 496
 499
 502
 505
 508
 511
 514
 517
 520
 523
 526
 529
 532
 535
 538
 541
 544
 547
 550
 553
 556
 559
 562
 565
 568
 571
 574
 577
 580
 583
 586
 589
 592
 595
 598
 601
 604
 607
 610
 613
 616
 619
 622
 625
 628
 631
 634
 637
 640
 643
 646
 649
 652
 655
 658
 661
 664
 667
 670
 673
 676
 679
 682
 685
 688
 691
 694
 697
 700
 703
 706
 709
 712
 715
 718
 721
 724
 727
 730
 733
 736
 739
 742
 745
 748
 751
 754
 757
 760
 763
 766
 769
 772
 775
 778
 781
 784
 787
 790
 793
 796
 799
 802
 805
 808
 811
 814
 817
 820
 823
 826
 829
 832
 835
 838
 841
 844
 847
 850
 853
 856
 859
 862
 865
 868
 871
 874
 877
 880
 883
 886
 889
 892
 895
 898
 901
 904
 907
 910
 913
 916
 919
 922
 925
 928
 931
 934
 937
 940
 943
 946
 949
 952
 955
 958
 961
 964
 967
 970
 973
 976
 979
 982
 985
 988
 991
 994
 997
 1000

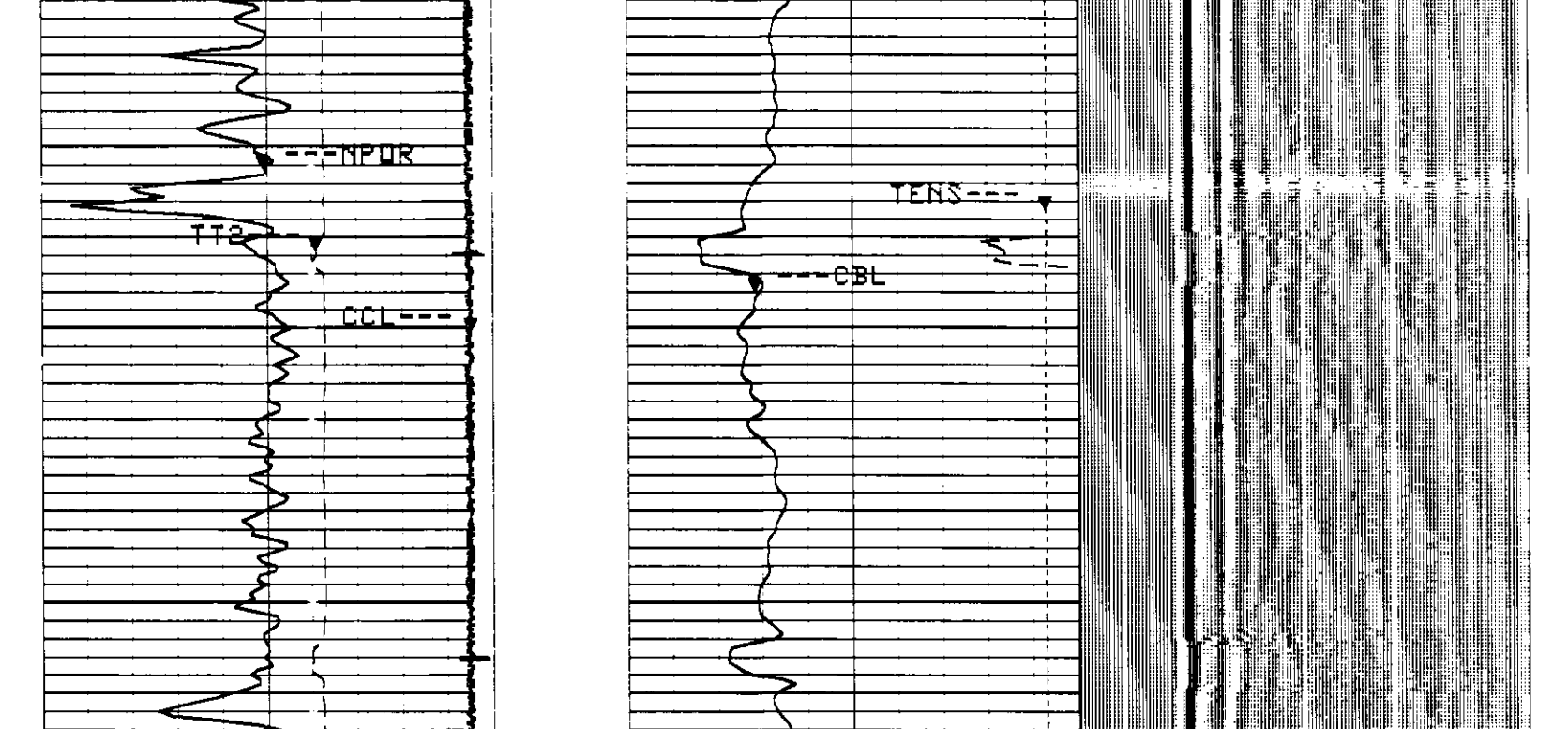
The well name, location and borehole reference data were furnished by the customer.

All interpretations are opinions based on references from electrical or other measurements and are carried out on the basis of the accuracy of the equipment used. Schlumberger is not responsible for any loss, cost, damage or expense incurred or sustained by anyone relying on any interpretation made by any of our officers, agents or employees. These interpretations are also subject to Clause 4 of our General Terms and Conditions as set out in our current Price Schedule.

Run No.	ONE
Service Order No.	484623
Drilling Fluid Level	
Salinity	
Rmt @ BHT	
Rmo @ BHT	
Logging Speed	3600.0 FHR
EQUIPMENT DATA	
Tool Number 1	SLS-WA 125
Tool Number 2	SLS-MA 109
Tool Number 3	CNC-A 2356
Tool Number 4	CAL-R 433
Tool Number 5	
Tool Number 6	SLS-DA 428
Tool Number 7	
Tool Number 8	
Tool Number 9	
Tool Number 10	
Tool Number 11	
Tool Number 12	

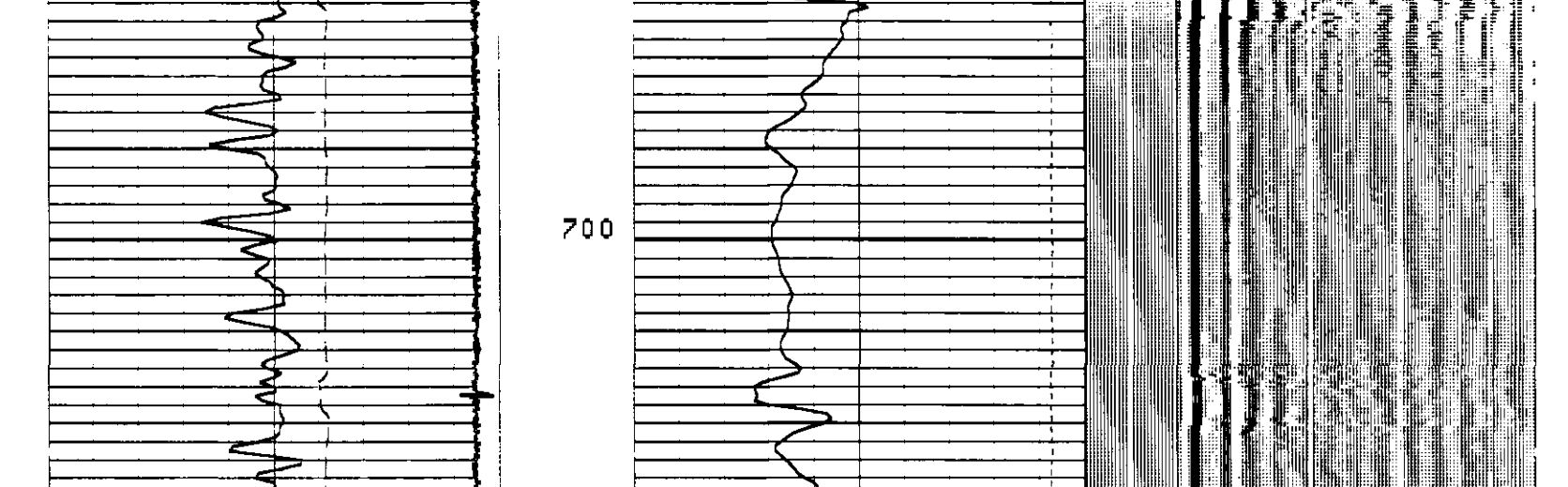
REMARKS: CORRELATED TO SWS CNL AND DL OF 28-AUG-1993.

LOGGING TOOL STRING SKETCH

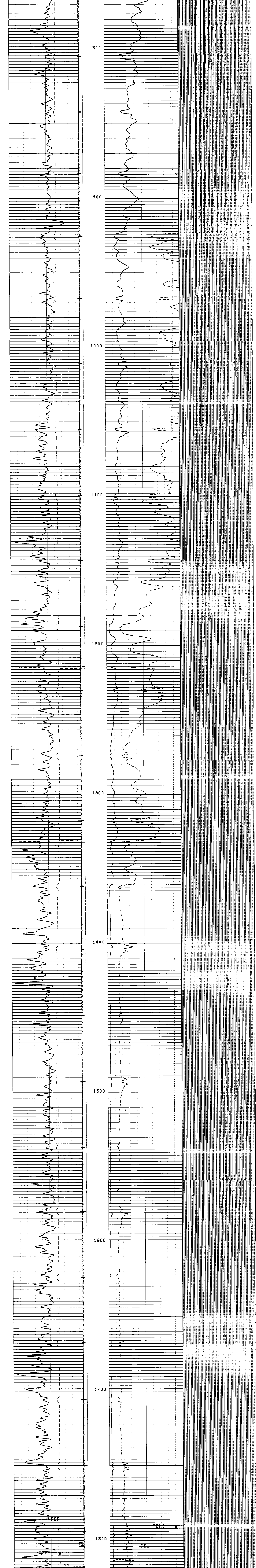


TOTAL TOOL STRING LENGTH IS 96.9 F.
 TOTAL TOOL STRING WEIGHT IS 547. LB IN AIR.

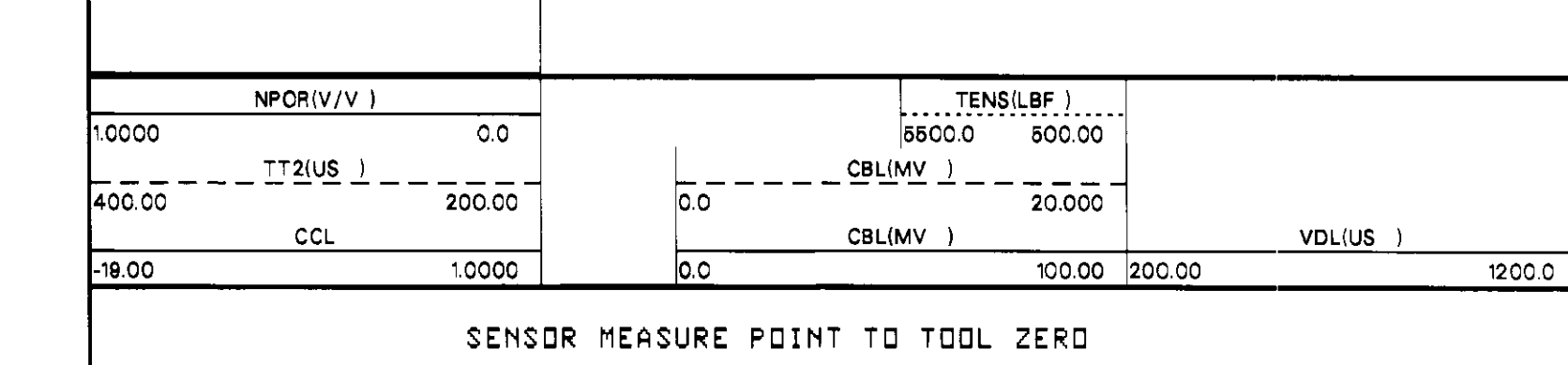
MAIN LOG - 0 PSI



CP 38.2 FILE 4 31-AUG-1993 22:07 (UP)



CP 38.2 FILE 4 31-AUG-1993 21:48 (UP)

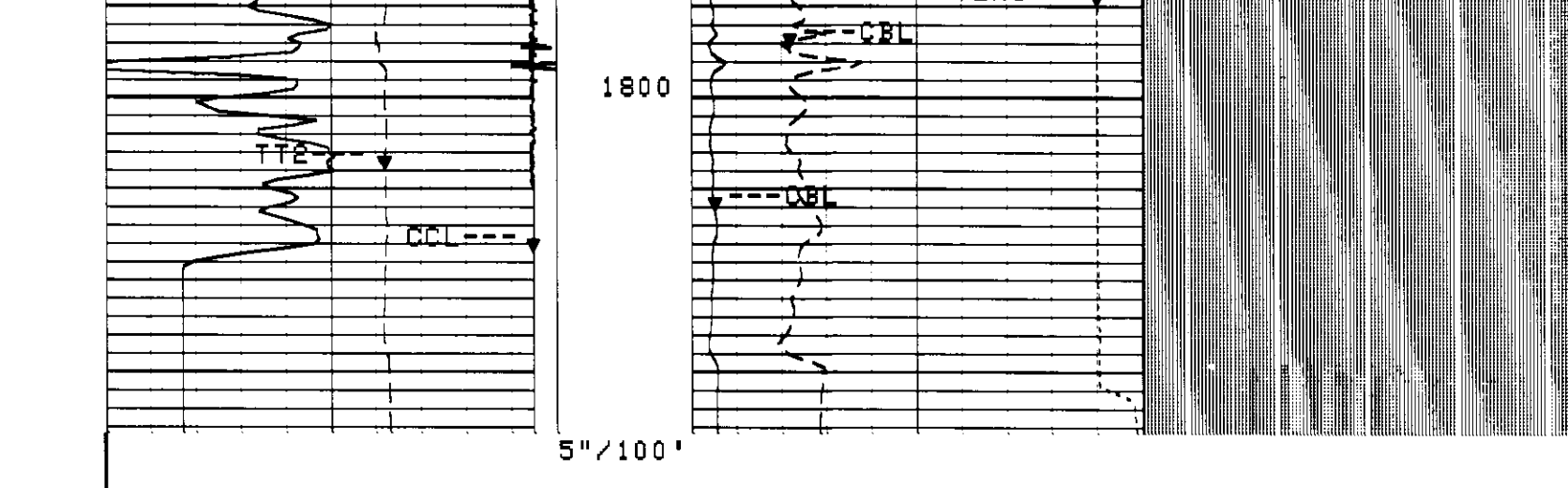


SENSE MEASURE POINT TO TOOL ZERO

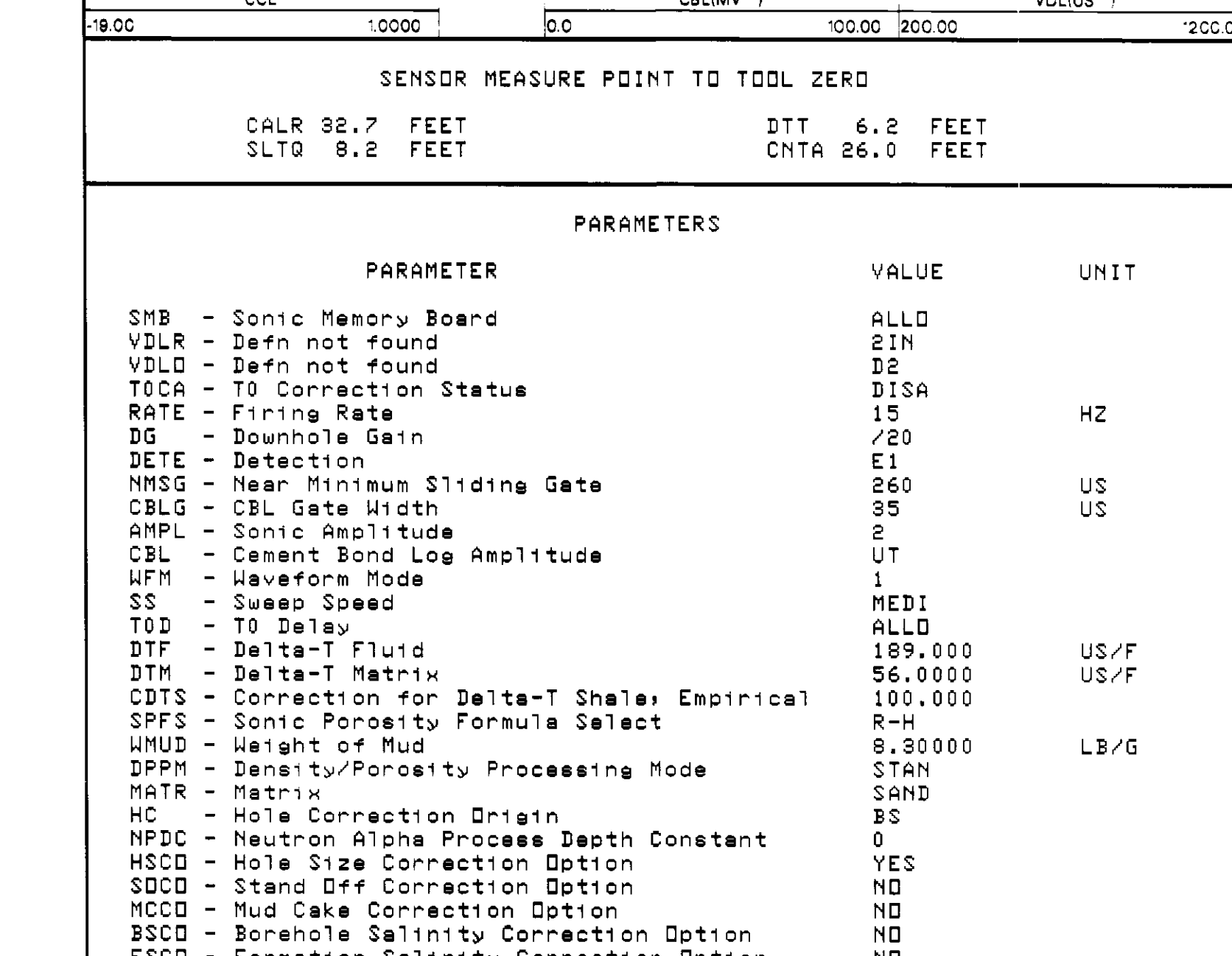
CALR	38.7 FEET	DTT	6.2 FEET
SLTO	8.2 FEET	CNTR	26.0 FEET

PARAMETER	VALUE	UNIT
SMB - Sonic Memory Board	ALLD	
VDLR - Defn not found	D2N	
VDLD - Defn not found	D2	
TOCA - TO Connection Status	DISA	
RATE - Firing Rate	15	HZ
DEG - Downhole Gain	20	
DETE - Detection	E1	
NMSG - Near Minimum Sliding Gate	26	US
CBLG - CBL Gate Width	35	US
AMPL - Amplitude	2	
CBL - Cement Bond Log Amplitude	UT	
WFM - Waveform Mode	1	
SS - Sweep Speed	1	MEDI
TOD - TO Delay	200	ALLD
DTF - Delta-T Fluid	189.000	US/F
DTM - Delta-T Matrix	56.0000	US/F
CDTS - Connection for Delta-T Shale; Empirical	100.000	
SPFS - Sonic Porosity Formula Select	R-H	
WMUD - Weight of Mud	8.30000	LB/G
DPFH - Density/Porosity Processing Mode	STAN	
MATR - Matrix	SAND	
HC - Hole Connection Origin	BS	
NPDC - Neutron Alpha Process Depth Constant	0	
HSCD - Hole Size Connection Option	YES	
SDCD - Stand Off Connection Option	NO	
MCCD - Mud Cake Connection Option	NO	
BSCD - Borehole Salinity Connection Option	NO	
FSCD - Formation Salinity Connection Option	NO	
MUCD - Mud Weight Connection Option	NO	
PTCD - Pressure Temperature Connection Option	NO	
CCCD - Casing & Cement Connection Option for Thick	NO	
SWAT - Standoff Data Source	SDCN	
MCDR - Mud Connection	NATU	
SDCN - Stand Off for Compensated Neutron	500000	IN
FSCAL - Formation Salinity	-50000.0	PPM
ANGL - Angle of Well	0.0	DEG
GGRD - Geothermal Gradient	.0100000	DEG/F
BHFL - Borehole Fluid Type	WATE	PSIA
CSTR - Cement Strength of Cement	1500.00	PSIA
CHEI - Casing Height	20.0000	LB/F
DHCD - Digitizer Word Count	512	US
DSIN - Digitizer Sample Interval	5	US
DDEL - Digitizing Delay	300	US
STEM - Surface Temperature	80.0000	DEGF
DPD - Drilling Fluid Density	8.30000	LB/G
RHFS - Resistivity of Mud Filtrate Sample	-50000.0	OHM
RMS - Resistivity of Mud Sample	-50000.0	OHM
MST - Mud Sample Temperature	-50000.0	DEGF
MFST - Mud Filtrate Sample Temperature	-50000.0	DEGF
BS - Bit Size	8.2500	IN
BHS - Borehole Status (Open or Cased)	CASE	
CSIZ - Casing Size	7.00000	IN

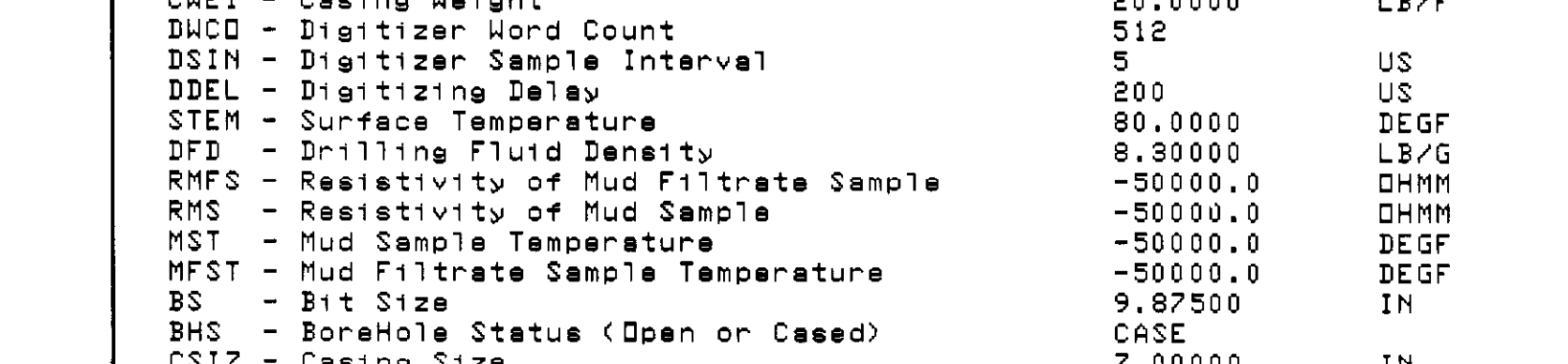
REPEAT SECTION - 0 PSI



CP 38.2 FILE 3 31-AUG-1993 21:48 (UP)



CP 38.2 FILE 3 31-AUG-1993 21:38 (UP)



SENSE MEASURE POINT TO TOOL ZERO

CALR	38.7 FEET	DTT	6.2 FEET
SLTO	8.2 FEET	CNTR	26.0 FEET

PARAMETER	VALUE	UNIT
SMB - Sonic Memory Board	ALLD	
VDLR - Defn not found	D2N	
VDLD - Defn not found	D2	
TOCA - TO Connection Status	DISA	
RATE - Firing Rate	15	HZ
DEG - Downhole Gain	20	
DETE - Detection	E1	
NMSG - Near Minimum Sliding Gate	26	US
CBLG - CBL Gate Width	35	US
AMPL - Amplitude	2	
CBL - Cement Bond Log Amplitude	UT	
WFM - Waveform Mode	1	
SS - Sweep Speed	1	MEDI
TOD - TO Delay	200	ALLD
DTF - Delta-T Fluid	189.000	US/F
DTM - Delta-T Matrix	56.0000	US/F
CDTS - Connection for Delta-T Shale; Empirical	100.000	
SPFS - Sonic Porosity Formula Select	R-H	
WMUD - Weight of Mud	8.30000	LB/G
DPFH - Density/Porosity Processing Mode	STAN	
MATR - Matrix	SAND	
HC - Hole Connection Origin	BS	
NPDC - Neutron Alpha Process Depth Constant	0	
HSCD - Hole Size Connection Option	YES	
SDCD - Stand Off Connection Option	NO	
MCCD - Mud Cake Connection Option	NO	
BSCD - Borehole Salinity Connection Option	NO	
FSCD - Formation Salinity Connection Option	NO	
MUCD - Mud Weight Connection Option	NO	
PTCD - Pressure Temperature Connection Option	NO	
CCCD - Casing & Cement Connection Option for Thick	NO	
SWAT - Standoff Data Source	SDCN	
MCDR - Mud Connection	NATU	
SDCN - Stand Off for Compensated Neutron	500000	IN
FSCAL - Formation Salinity	-50000.0	PPM
ANGL - Angle of Well	0.0	DEG
GGRD - Geothermal Gradient	.0100000	DEG/F
BHFL - Borehole Fluid Type	WATE	PSIA
CSTR - Cement Strength of Cement	1500.00	PSIA
CHEI - Casing Height	20.0000	LB/F
DHCD - Digitizer Word Count	512	US
DSIN - Digitizer Sample Interval	5	US
DDEL - Digitizing Delay	300	US
STEM - Surface Temperature	80.0000	DEGF
DPD - Drilling Fluid Density	8.30000	LB/G
RHFS - Resistivity of Mud Filtrate Sample	-50000.0	OHM
RMS - Resistivity of Mud Sample	-50000.0	OHM
MST - Mud Sample Temperature	-50000.0	DEGF
MFST - Mud Filtrate Sample Temperature	-50000.0	DEGF
BS - Bit Size	8.2500	IN
BHS - Borehole Status (Open or Cased)	CASE	
CSIZ - Casing Size	7.00000	IN

COMPANY NAHAMA & WEAGANT ENERGY COMPANY

WELL "CONDOR" L.F. #43-32-65

FIELD MIST

COUNTY COLUMBIA STATE OREGON

CEMENT BOND LOG

VARIABLE DENSITY

Schlumberger

SCHL. PR 1828.0 F
 DLRA. TD 1836.0 F
 Elev: KB 801.0 F
 DF
 QL 781.0 F