

Schlumberger
DUAL INDUCTION - SFL
 WITH LINEAR CORRELATION LOG

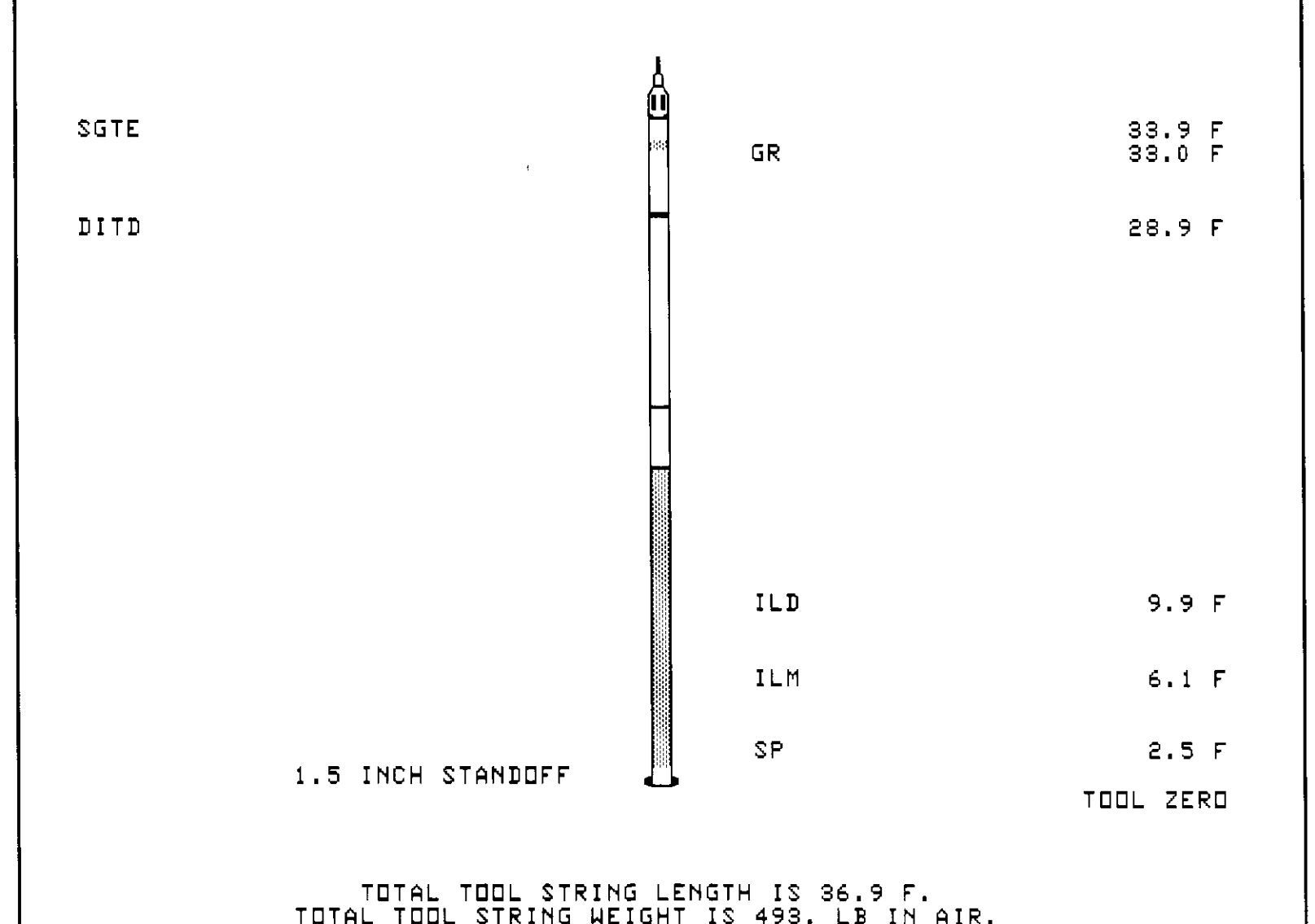
COMPANY NAHAMA & WEAGANT ENERGY CO.
 WELL "CONDOR" L.F. #43-32-65
 FIELD MIST
 COUNTY COLUMBIA STATE OREGON
 LOCATION 2367'N AND 1009'W
 WELL 2367'N AND 1009'W
 COMPANY NAHAMA & WEAGANT ENERGY CO.
 LOCATION FROM SE CORNER
 API SERIAL NO. 36-009-00302
 SECT. 32 TWP. 7910 F RANGE 5W
 ELEV. 7910 F
 Log Measured From KB 10.0 F above Perm. Datum
 Date 29-AUG-1993
 Depth Driller ONE
 Depth Driller (Seal) 1908.0 F
 Btm. Log Interval 1901.0 F
 Top Log Interval 1902.0 F
 Casing-Driller 10 3/4" @ 1902.0 F
 Casing-Logger 507.0 F
 Bit Size 9 7/8" @ 1909.0 F
 Type Fluid in Hole ACRYLAMON
 Dens. 9.20 LB/G 42.0 S
 pH 9.0
 Fld. Loss 9.0 6.0 CB
 Source of Sample FLOWLINE
 Fm @ Meas. Temp. 2910 OHMM @ 80.0 DEG F
 Fm @ Meas. Temp. 3890 OHMM @ 68.0 DEG F
 Fm @ Meas. Temp. 2.550 OHMM @ 68.0 DEG F
 Source: Rmf/ Fmc MEASURED @ 82.0 DEG F
 Fm @ BHT 2903 OHMM @ 82.0 DEG F
 MEASURED @ 82.0 DEG F
 Log on Bottom 1511 29-AUG-1993
 Max. Rec. Temp. 82.0 DEG F
 Equip. Location SCOTT PLICH SACRAMENTO
 Witnessed By JOE NAHAMA / ROB LUCAS

The well name, location and borehole reference data were furnished by the customer.

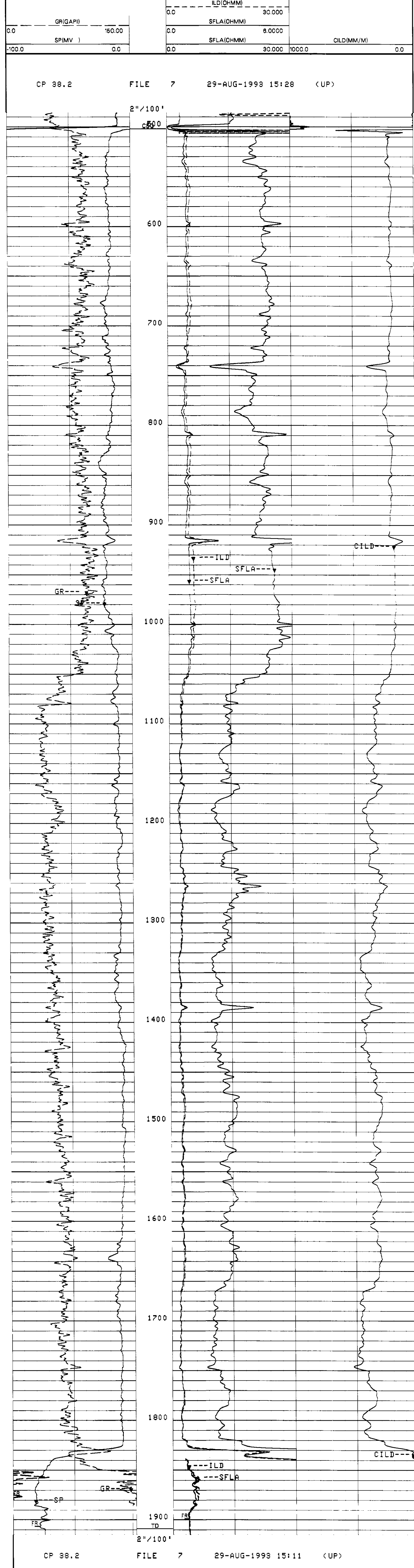
All interpretations are opinions based on inferences from electrical or other measurements and we cannot, and do not, guarantee the accuracy or correctness of any interpretations, and we shall not, except in the case of gross or willful negligence or our part, be liable or responsible for any loss, costs, damages or expenses incurred or sustained by anyone resulting from any interpretations made by any of our officers, agents or employees. These interpretations are also subject to Clause 4 of our General Terms and Conditions as set out in our current Price Schedule.

Run No.	ONE
Service Order No.	624460
Drilling Fluid Level	5.0 F
Salinity	600.0 PPM
Rmf @ BHT	3278 OHMM @ 82.0 DEG F
Rmo @ BHT	2149 OHMM @ 82.0 DEG F
Logging Speed	3600.0 F/HR
EQUIPMENT DATA	
Tool Number 1	DIS-EC 1422
Tool Number 2	DIC-DA 1149
Tool Number 3	SGC-JC 3206
Tool Number 4	IEM-BD 1349
Tool Number 5	NLM-BC 418
Tool Number 6	
Tool Number 7	
Tool Number 8	
Tool Number 9	
Tool Number 10	
Tool Number 11	
Tool Number 12	
REMARKS:	

LOGGING TOOL STRING SKETCH



MAIN LOG



SENSOR MEASURE POINT TO TOOL ZERO
 DITD 9.9 FEET SGTE 33.0 FEET
 DTT 2.5 FEET

PARAMETER	VALUE	UNIT
WMUD - Weight of Mud	9.20000	LB/G
MSEC - Medium Sonde Error Correction	6.70000	MM/M
SBR - Shoulder Bed Resistivity	1.00000	OHMM
DSEC - Deep Sonde Error Correction	4.20000	MM/M
NCJT - NGT Calibration Jig Type	GSRY	
BS - Bit Size	9.87500	IN
BHS - BoreHole Status (Open or Cased)	OPEN	

COMPANY NAHAMA & WEAGANT ENERGY CO. SCHL. FR 1901.0 F
 WELL "CONDOR" L.F. #43-32-65 SCHL. TD 1908.0 F
 FIELD MIST DRLR. TD 1908.0 F
 COUNTY COLUMBIA STATE OREGON Elev: KB 801.0 F
 DF
 GL 791.0 F



DUAL INDUCTION - SFL
 WITH LINEAR CORRELATION LOG