



EPOCH WELL LOGGING, INC.

COMPANY DY OIL INC.
WELL LAKE # CC-24-5
FIELD MIST
LOCATION 942.82' N and 371.72' W from the SE corner of the SW of Section 5, T5N, R5W, X3.1.

COUNTY, STATE Columbia, Oregon

API WELL INDEX NO.

ELEVATION 649.36' C.L., 662.56' K.B.

DATES FROM 10-28-89 TO 10-31-89

DEPTHS FROM 33' K.B. TO 1473' K.B.

SPUD DATE 10-28-89

DILLING CONTRACTOR Taylor Drilling Co., Rig # 4

MUD COMPANY Beaver Drilling Fluids, Inc.

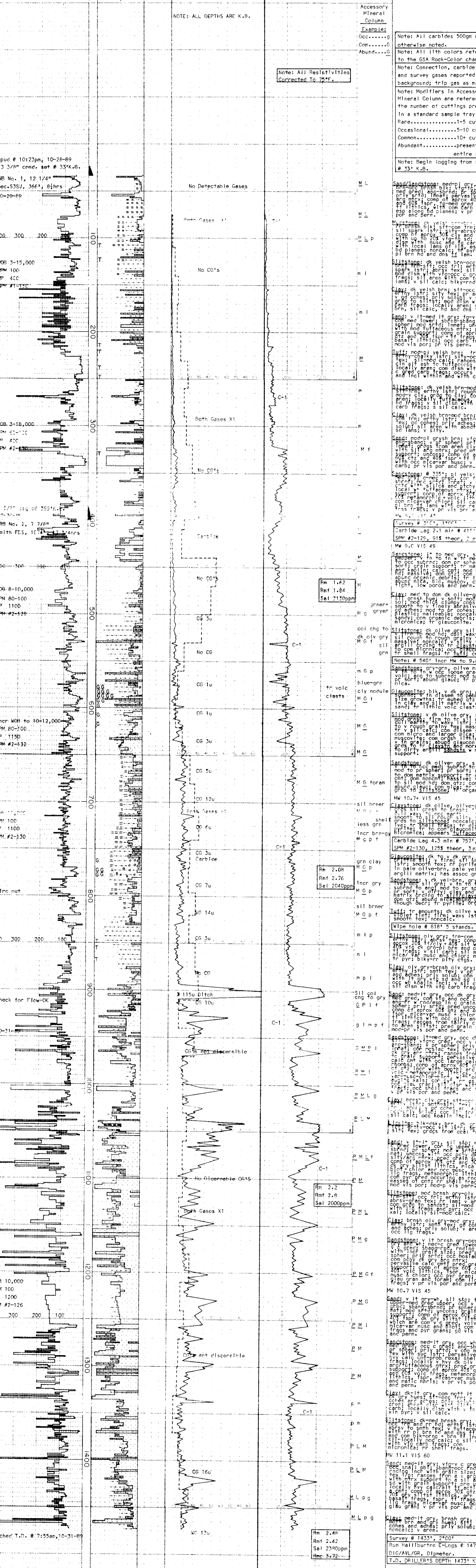
LOGGING GEOLOGISTS Craig Anderson
Dave Deatherage

Table with columns: ABBREVIATIONS, MUD WEIGHT, FUNNEL VISCOSITY, PLASTIC VISCOSITY, YIELD POINT, FLUID LOSS (cc/30 min), PPM CHLORIDE ION, MUD RESISTIVITY, FILTRATE RESISTIVITY, LOGGED AFTER TRIP, NO RETURNS, POOR RETURNS, MUD TYPE; CASING RECORD: 12 3/8" conc. AT 20' C.L., 8 5/8" AT 399' K.B., 5 1/2" AT AT; HOLE SIZE: 12 1/4" AT 396' K.B., 7 7/8" AT 1473' K.B., AT

Legend for lithology symbols: SAND/SANDSTONE, CLAY, LIMESTONE, TUFF, LIGNITE, SHALE, MUDSTONE, DOLOMITE, FOSSIL, GLAUCONITE, SILTSTONE, CONGLOMERATE, BASALT, MICA, PYRITE

OIL: BASED ON LIVE OIL IN UNWASHED CUTTINGS AND PERCENT STAINING AND FLUORESCENCE OF WASHED SAMPLES.

PENETRATION ANALYSIS OF RETURNS REMARKS



Summary table of logs: Log # 211 (MW 9.0 VIS 49), Log # 212 (MW 10.7 VIS 45), Log # 213 (MW 10.7 VIS 45), Log # 214 (MW 11.1 VIS 60)

Summary table of logs: Log # 215 (MW 10.0 VIS 126), Log # 216 (MW 10.7 VIS 45), Log # 217 (MW 10.7 VIS 45), Log # 218 (MW 10.7 VIS 45)

Notes and survey information: Survey # 3500, Survey # 3501, Survey # 3502, Survey # 3503