

WELL LOGGING, INC.

COMPANY DY GIL INC.
WELL LANE # CC-24-5 REDRILL #1
FIELD MIST
LOCATION

COUNTY, STATE Columbia, Oregon
API WELL INDEX NO.

ELEVATION
DATES FROM 11-11-89 TO 11-15-89
DEPTHS FROM 20' K.B. TO 1126' K.B.
SPUD DATE 11-11-89

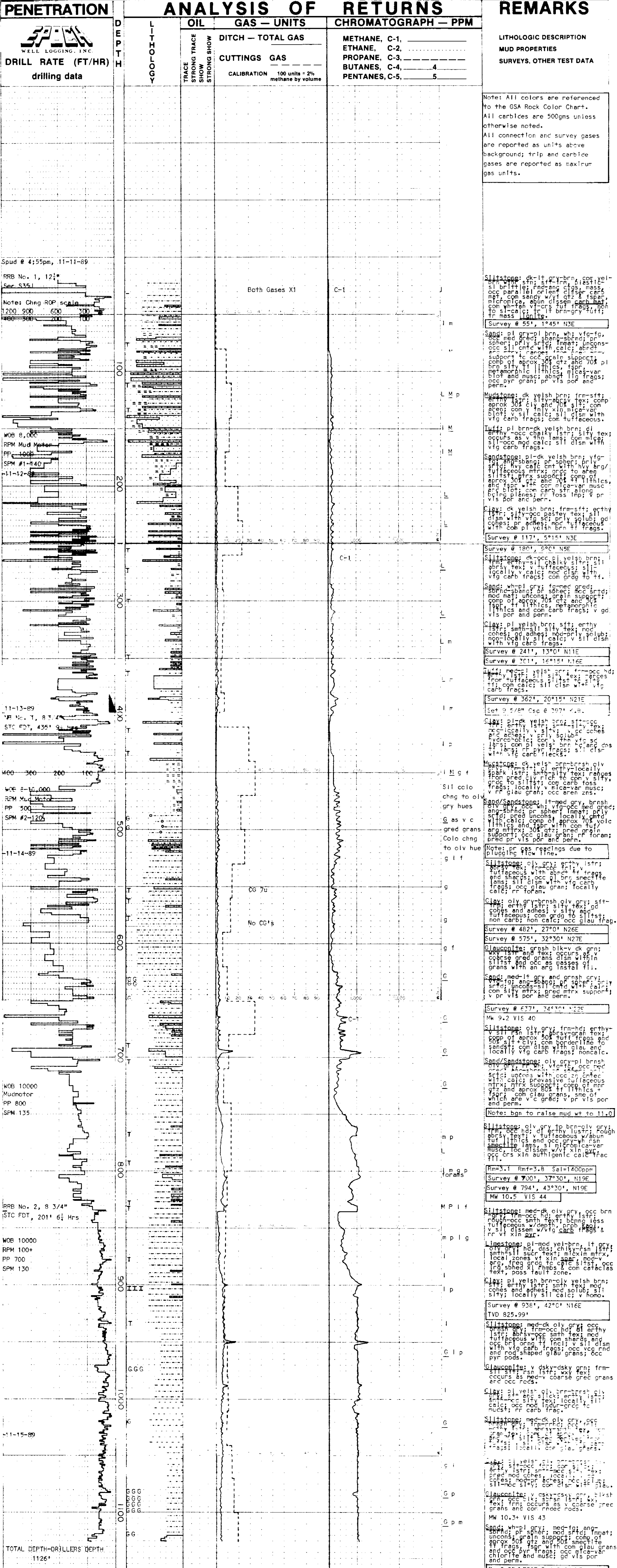
DRILLING CONTRACTOR Taylor Drilling Co., 21c #4
MUD COMPANY Beaver Drilling Fluids
LOGGING GEOLOGISTS Gary Sandstrom
Craig Anderson

Table with 2 columns: ABBREVIATIONS and CASING RECORD. Lists various abbreviations like NB BIT, MW MUD WEIGHT, etc., and casing record details like 13 3/8" cond. AT 20' G.L.

Table with 2 columns: HOLE SIZE and HOLE SIZE. Lists hole size measurements like 12 1/2" AT 297' K.B., 8 3/4" AT 1126' K.B.

- Legend for lithology symbols: SAND/SANDSTONE, SHALE, SILTSTONE, CLAY, DIATOMITE, CONGLOMERATE, LIMESTONE, DOLOMITE, BASALT, TUFF, FOSSIL, MICA, LIGNITE, GLAUCONITE, PYRITE.

OIL: BASED ON LIVE OIL IN UNWASHED CUTTINGS AND PERCENT STAINING AND FLUORESCENCE OF WASHED SAMPLES.



PENETRATION
WELL LOGGING, INC.
DRILL RATE (FT/HR)
drilling data

ANALYSIS OF RETURNS
OIL GAS - UNITS CHROMATOGRAPH - PPM
METHANE, C-1,
ETHANE, C-2,
PROPANE, C-3,
BUTANES, C-4,
PENTANES, C-5,

REMARKS
LITHOLOGIC DESCRIPTION
MUD PROPERTIES
SURVEYS, OTHER TEST DATA

Spud @ 4:55pm, 11-11-89
RRB No. 1, 12 1/2"
Sec. S351
Notes: Chng. ROP scale

WOB 8,000
RPM Mud Motor
PP 1000
SPM #1-140
11-12-89

11-13-89
RRB No. 1, 8 3/4"
STC FDT, 435'
WOB 3000
RPM Mud Motor
PP 500
SPM #2-120

WOB 10000
Mudmotor
PP 800
SPM 135

RRB No. 2, 8 3/4"
STC FDT, 201' 6 1/2 Hrs
WOB 10000
RPM 100+
PP 700
SPM 130

11-15-89
TOTAL DEPTH-DRILLERS DEPTH
1126'

Detailed lithological descriptions and survey data. Includes notes like 'Siltstone: dk-lt gray-brn, com vel-brn with stn; silty, frm; silty-lst; occ para lls; med-grn clay; mass; met; com sandy w/lt qtz & fsp; micromica; arg; com border lns; com vlt-fn vlt-grn; fuf frags; non to silty; silty; silty-brn; fuf; fuf; mass; lignite.' and survey information like 'Survey # 55', 1°45' N3E'.